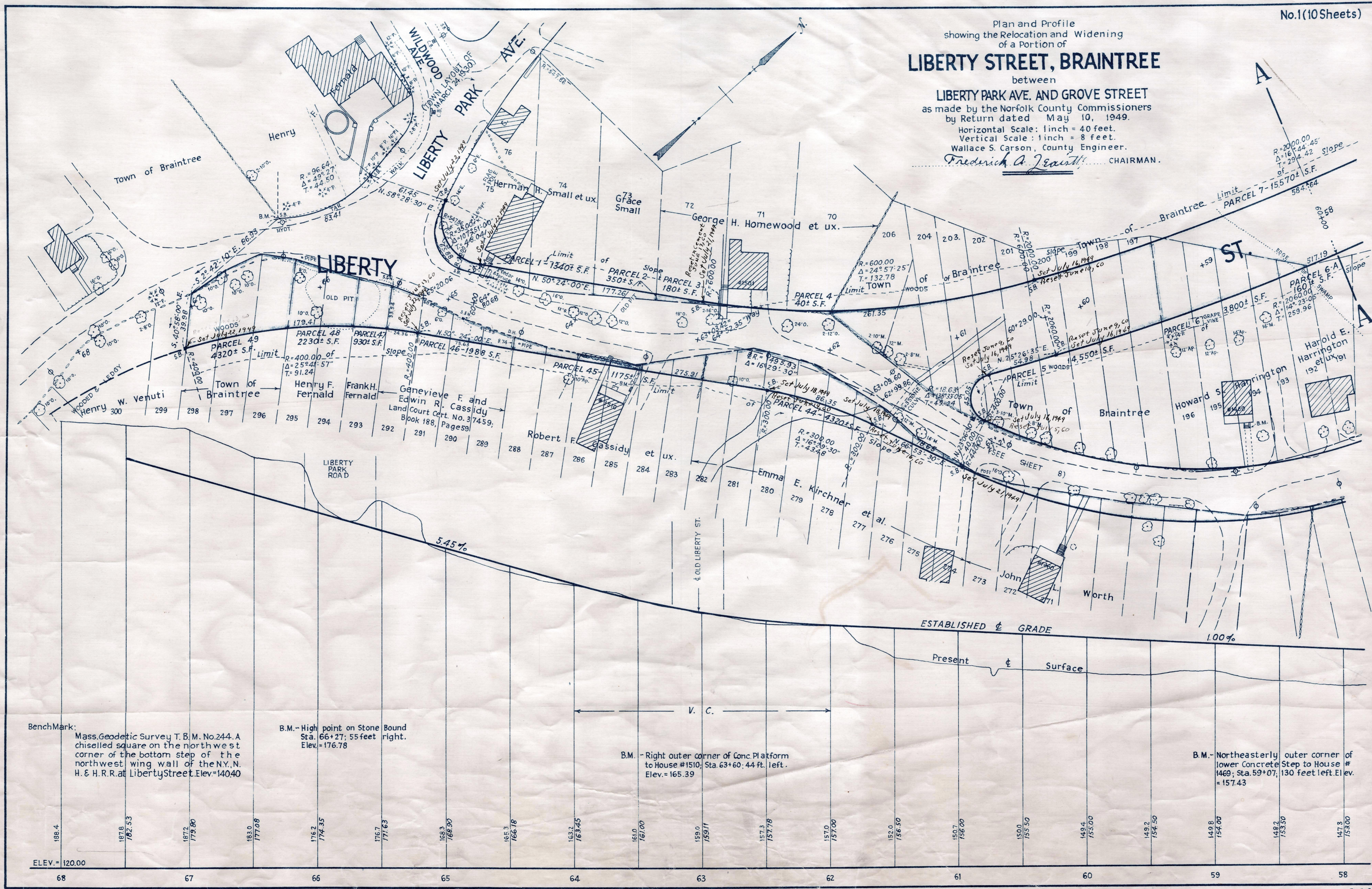


Plan and Profile
showing the Relocation and Widening
of a Portion of
LIBERTY STREET, BRAINTREE
between
LIBERTY PARK AVE. AND GROVE STREET
as made by the Norfolk County Commissioners
by Return dated May 10, 1949.
Horizontal Scale: 1 inch = 40 feet.
Vertical Scale: 1 inch = 8 feet.
Wallace S. Carson, County Engineer.
Fredrick A. Zeantl CHAIRMAN.



BenchMark:
Mass. Geodetic Survey T. B.M. No. 244. A
chiselled square on the north west
corner of the bottom step of the
northwest wing wall of the N.Y., N.
H. & H.R.R. at Liberty Street. Elev. = 140.40

B.M. - High point on Stone Bound
Sta. 66+27; 55 feet right.
Elev. = 176.78

B.M. - Right outer corner of Conc. Platform
to House #1510; Sta. 63+60; 44 ft. left.
Elev. = 165.39

B.M. - Northeastly outer corner of
lower Concrete Step to House #
1469; Sta. 59+07; 130 feet left. Elev.
= 157.43

186.4	181.8 182.53	187.2 179.80	183.0 177.08	176.2 174.35	176.7 171.63	168.3 168.90	165.3 166.18	163.2 163.45	161.0 161.00	159.0 159.11	157.3 157.78	157.0 157.00	156.0 156.50	150.7 156.00	150.0 155.50	149.4 155.00	149.2 154.50	149.8 154.00	148.2 153.50	147.3 153.00
68		67		66		65		64		63		62		61		60		59		58

CRF. ORDER RELOCATION BK. 2841 Pg. 547 JULY 8, 1949
TKG. BK. 2834, Pg. 451, PL. BK. 151, PLS. 596 TO 605 INCL. REC. JUNE 3, 1949

EASE.

Date of Entry June 28, 1949.