

Plan showing
Profile and Slope Easements
for the construction of a portion of
CENTRAL STREET, STOUGHTON

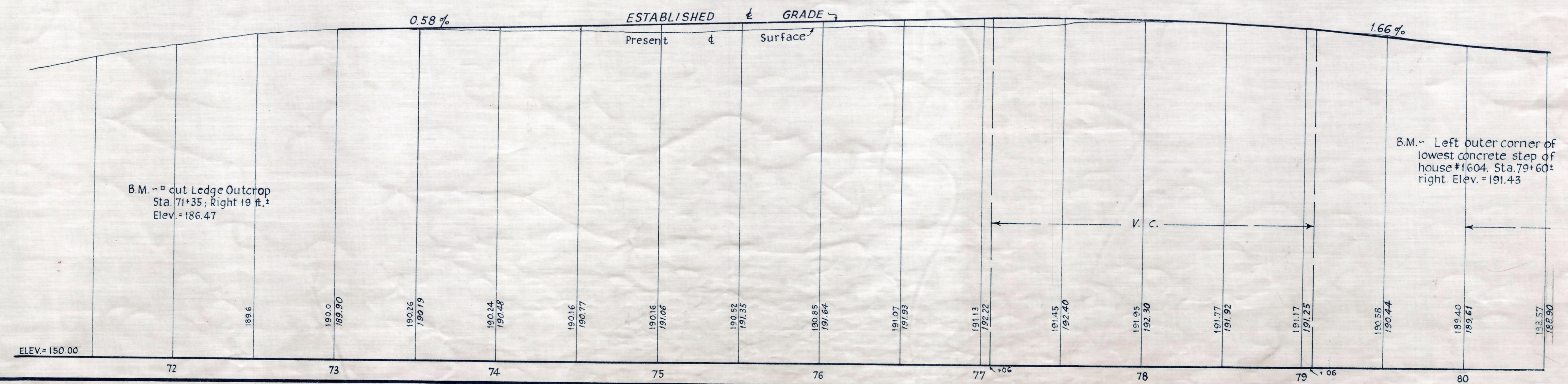
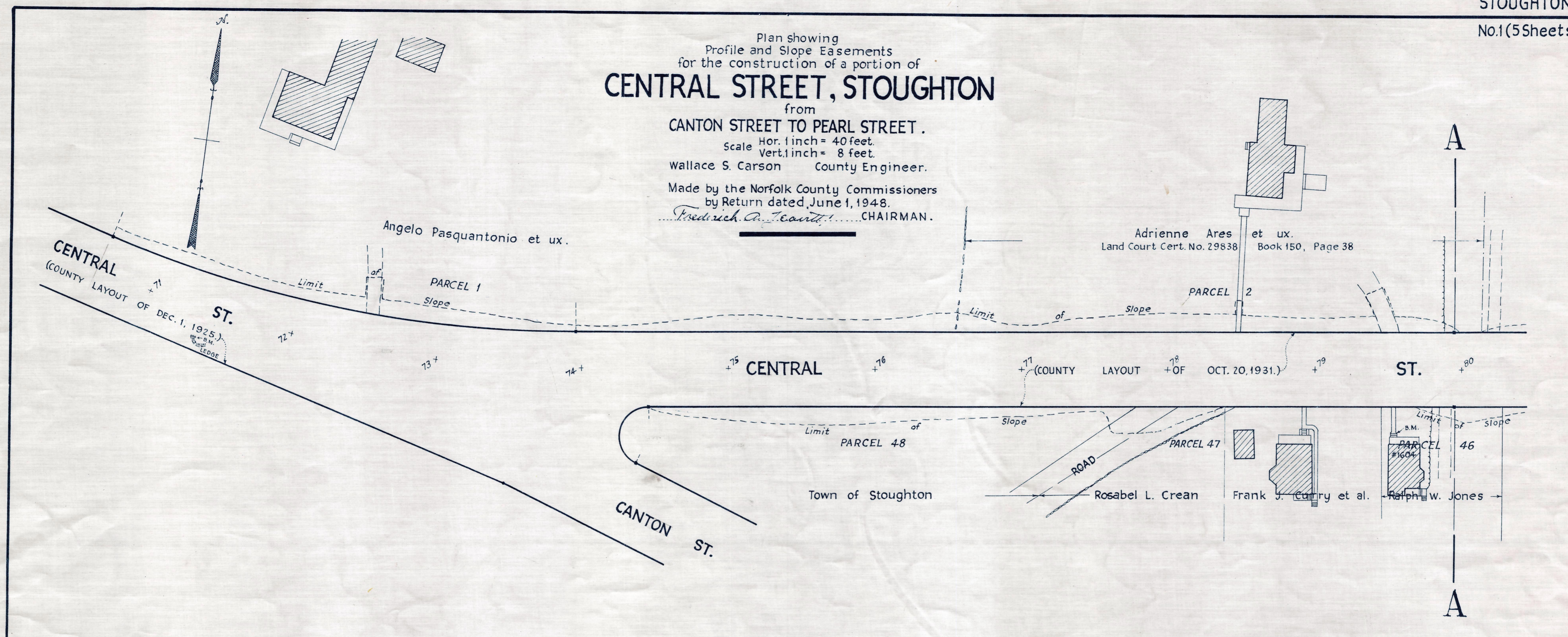
from
CANTON STREET TO PEARL STREET.

Scale Hor. 1 inch = 40 feet.
Vert. 1 inch = 8 feet.

Wallace S. Carson County Engineer.

Made by the Norfolk County Commissioners
by Return dated June 1, 1948.

Fredrich A. Teasdale CHAIRMAN.



B.M. - cut Ledge Outcrop
Sta. 71+35; Right 19 ft.
Elev. = 186.47

B.M. - Left outer corner of
lowest concrete step of
house #1604, Sta. 79+60±
right. Elev. = 191.43

CRTF. ORDER RELOCATION BK. 2766 PG. 223 JULY 7, 1948
TKG. BK. 2760 PG. 377; PL. BK. 146 PLS. 491 TO 495 INCL. REC. JUNE 14, 1948