

GROVE STREET, BROOKLINE

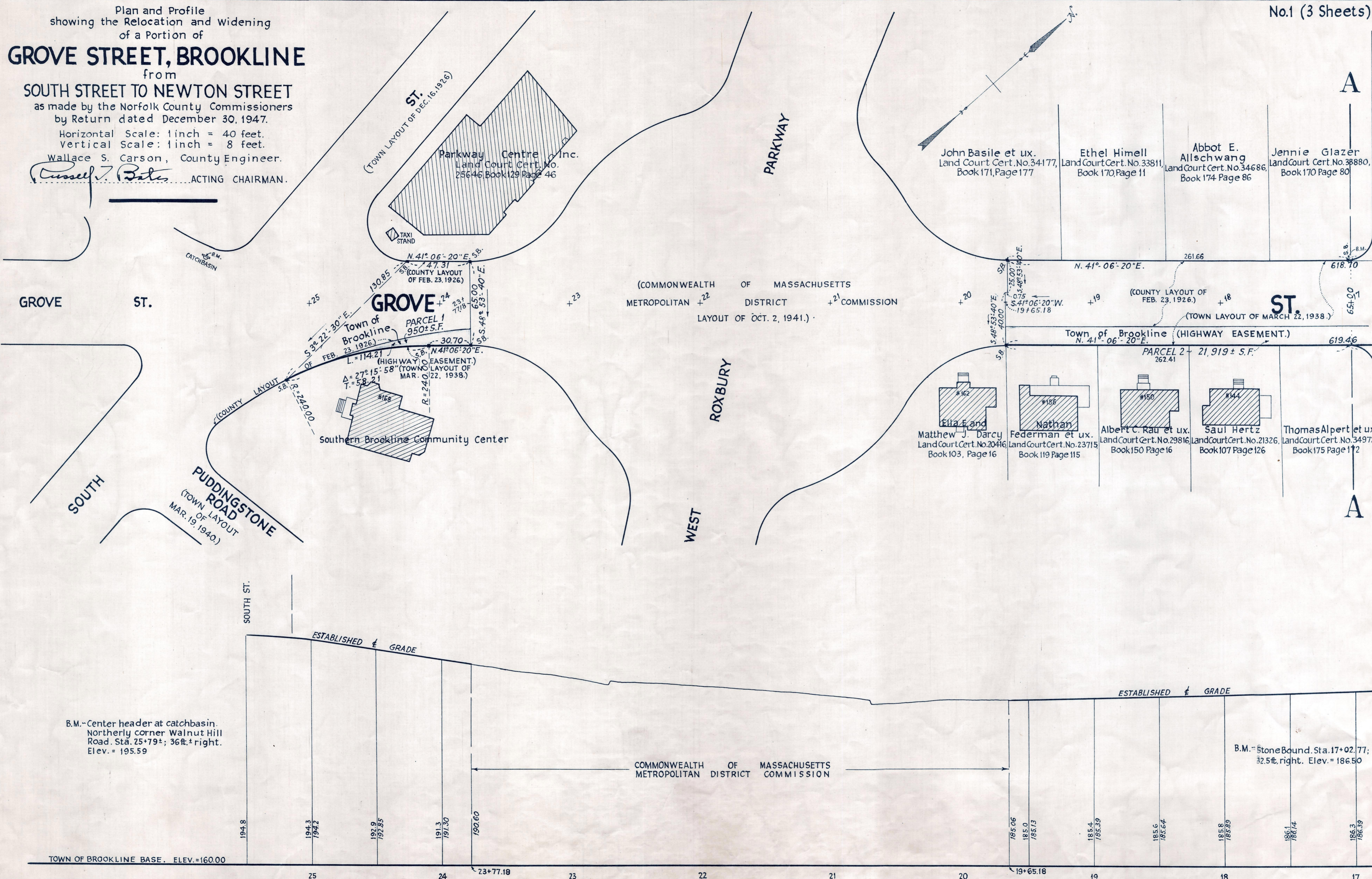
from
SOUTH STREET TO NEWTON STREET

as made by the Norfolk County Commissioners
by Return dated December 30, 1947.

Horizontal Scale: 1 inch = 40 feet.
Vertical Scale: 1 inch = 8 feet.

Wallace S. Carson, County Engineer.

Russell Bates ACTING CHAIRMAN.



(No Bounds to be set)