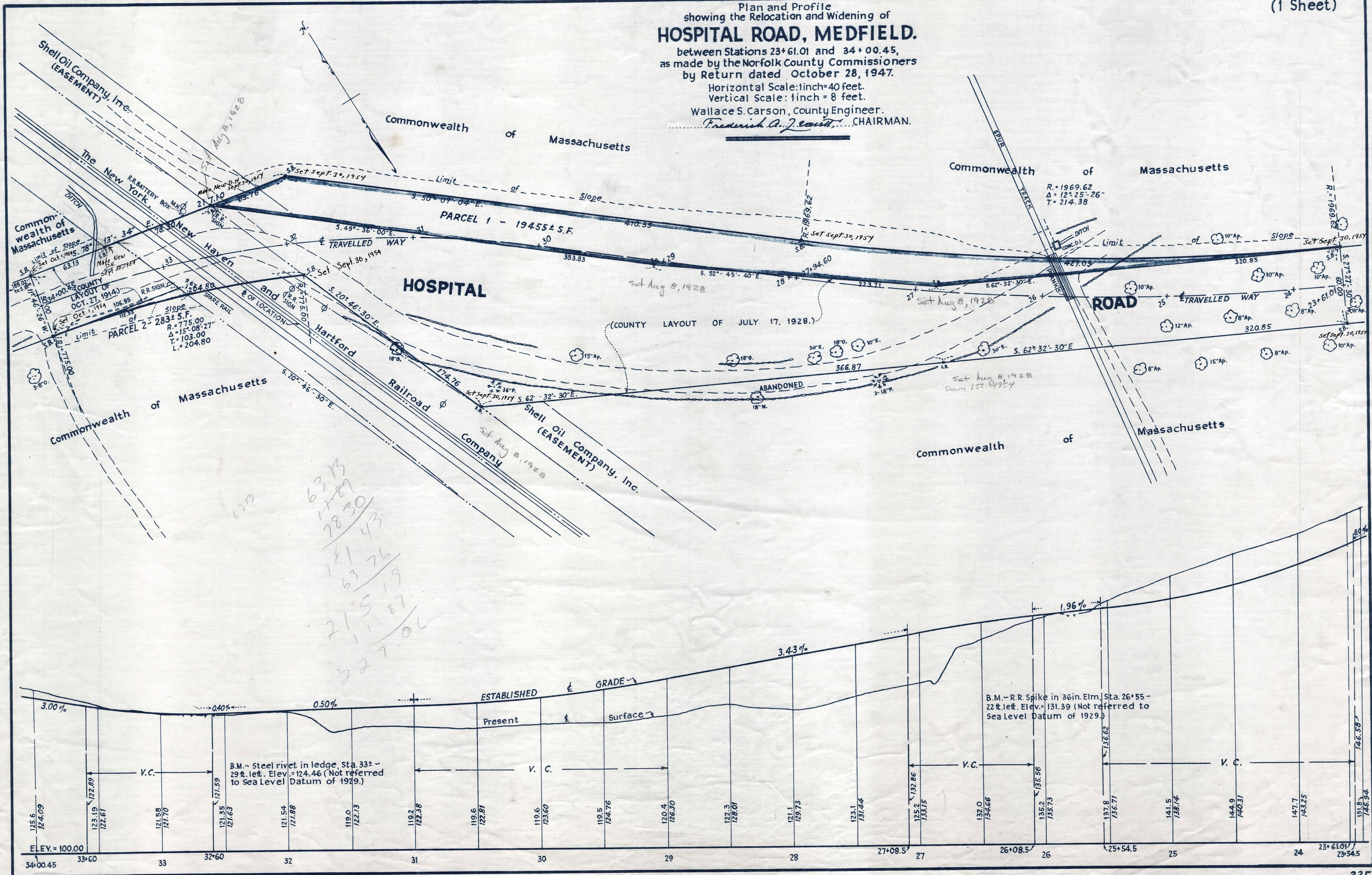


Plan and Profile
showing the Relocation and Widening of
HOSPITAL ROAD, MEDFIELD.

between Stations 23+61.01 and 34+00.45,
as made by the Norfolk County Commissioners
by Return dated October 28, 1947.

Horizontal Scale: 1 inch = 40 feet.
Vertical Scale: 1 inch = 8 feet.

Wallace S. Carson, County Engineer.
Fredrick A. Jewett, CHAIRMAN.



Handwritten notes and calculations:

63.13
17.89
78.30
181.43
63.76
215.19
111.87
227.06