

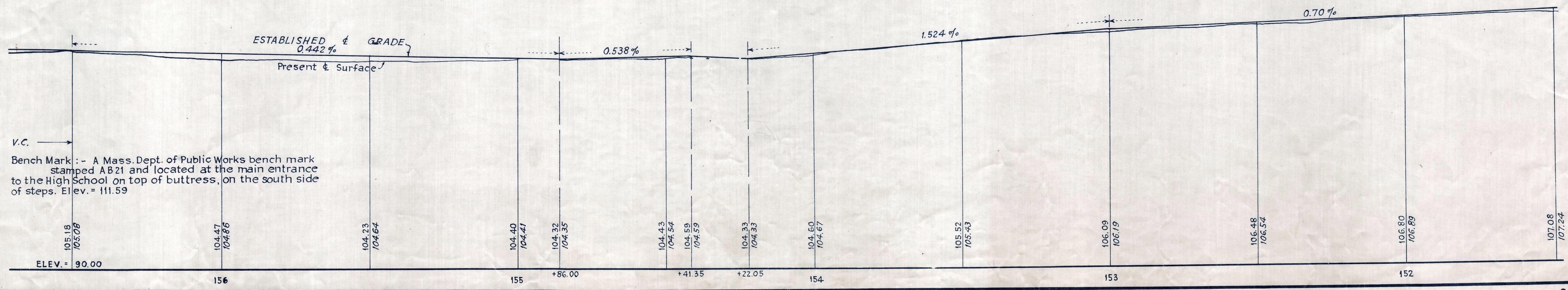
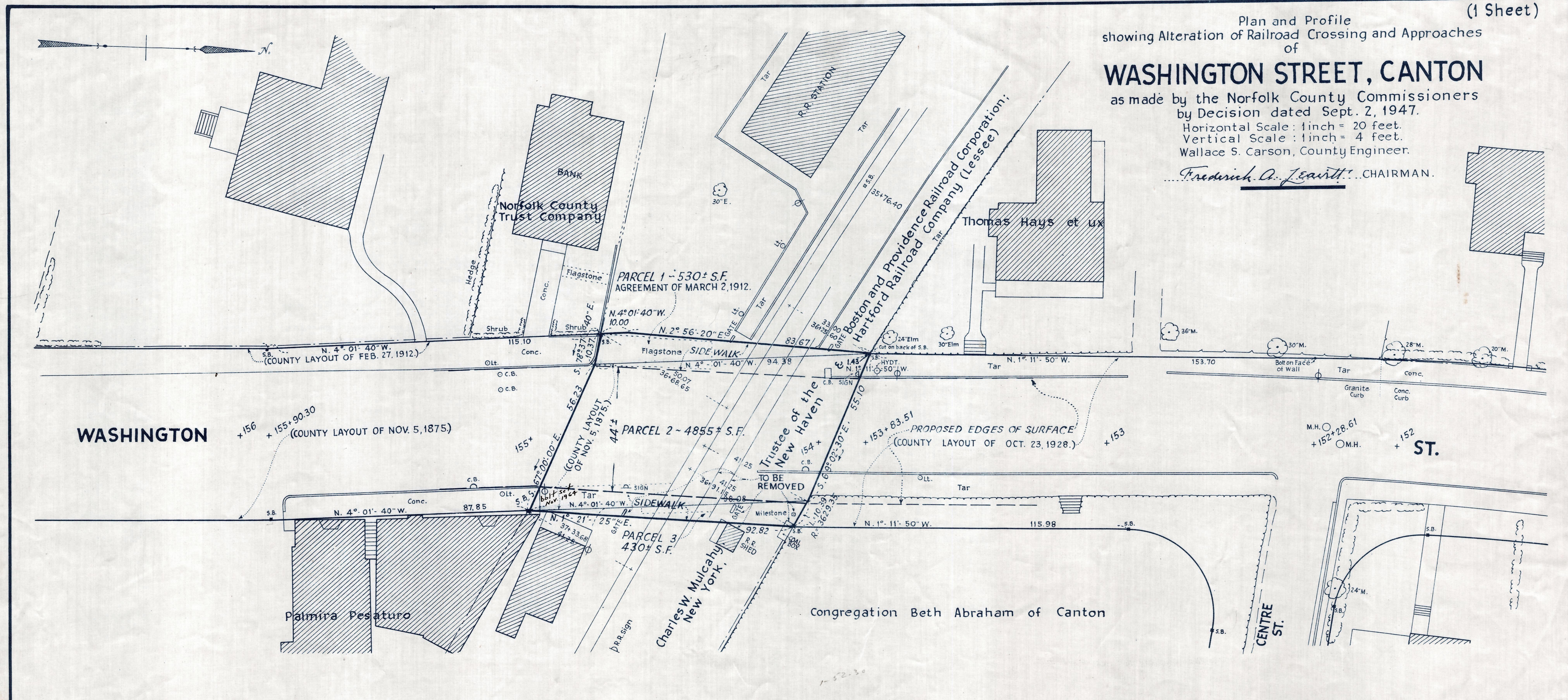
Plan and Profile  
showing Alteration of Railroad Crossing and Approaches  
of

# WASHINGTON STREET, CANTON

as made by the Norfolk County Commissioners  
by Decision dated Sept. 2, 1947.

Horizontal Scale: 1 inch = 20 feet.  
Vertical Scale: 1 inch = 4 feet.  
Wallace S. Carson, County Engineer.

*Fredrick A. Leavitt* CHAIRMAN.



Bench Mark: - A Mass. Dept. of Public Works bench mark stamped AB21 and located at the main entrance to the High School on top of buttress, on the south side of steps. Elev. = 111.59