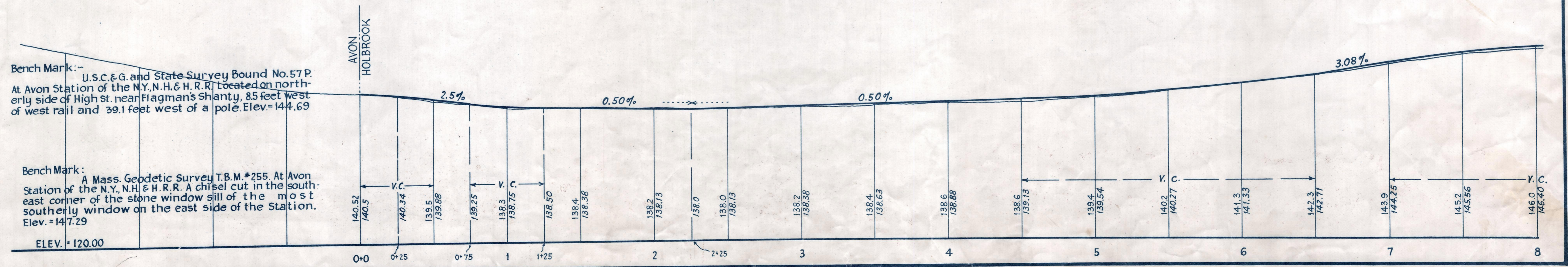
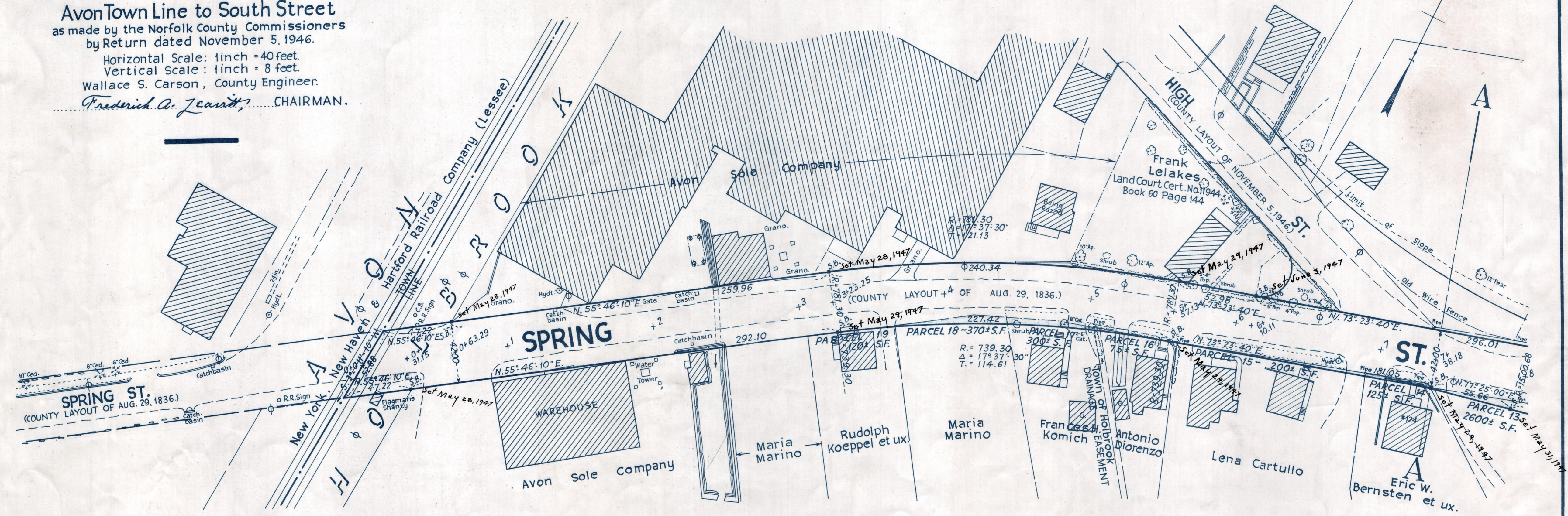


Plan and Profile
showing the Relocation and Widening
of
SPRING STREET, HOLBROOK

from the
Avon Town Line to South Street
as made by the Norfolk County Commissioners
by Return dated November 5, 1946.

Horizontal Scale: 1 inch = 40 feet.
Vertical Scale: 1 inch = 8 feet.
Wallace S. Carson, County Engineer.

Frederick A. Zearatt, CHAIRMAN.



Bench Mark: U.S.C. & G. and State Survey Bound No. 57 P. At Avon Station of the N.Y., N.H. & H.R.R. Located on northerly side of High St. near Flagman's Shanty, 8.5 feet west of west rail and 39.1 feet west of a pole. Elev. = 144.69

Bench Mark: A Mass. Geodetic Survey T.B.M. #255. At Avon Station of the N.Y., N.H. & H.R.R. A chisel cut in the south-east corner of the stone window sill of the most southerly window on the east side of the Station. Elev. = 147.29