

Plan and Profile
 showing the Relocation and Widening
 of a Portion of
LINCOLN STREET, FRANKLIN

from
 THE MEDWAY TOWN LINE TO BROOK STREET

as made by the Norfolk County Commissioners
 by Return dated October 29, 1946.

Horizontal Scale: 1 inch = 40 feet.

Vertical Scale: 1 inch = 8 feet.

Wallace S. Carson, County Engineer.

Friedrich A. J. Carvill, CHAIRMAN.

George O. Raney et ux.
 Land Court Cert. No. 33272
 Book 167 Page 72

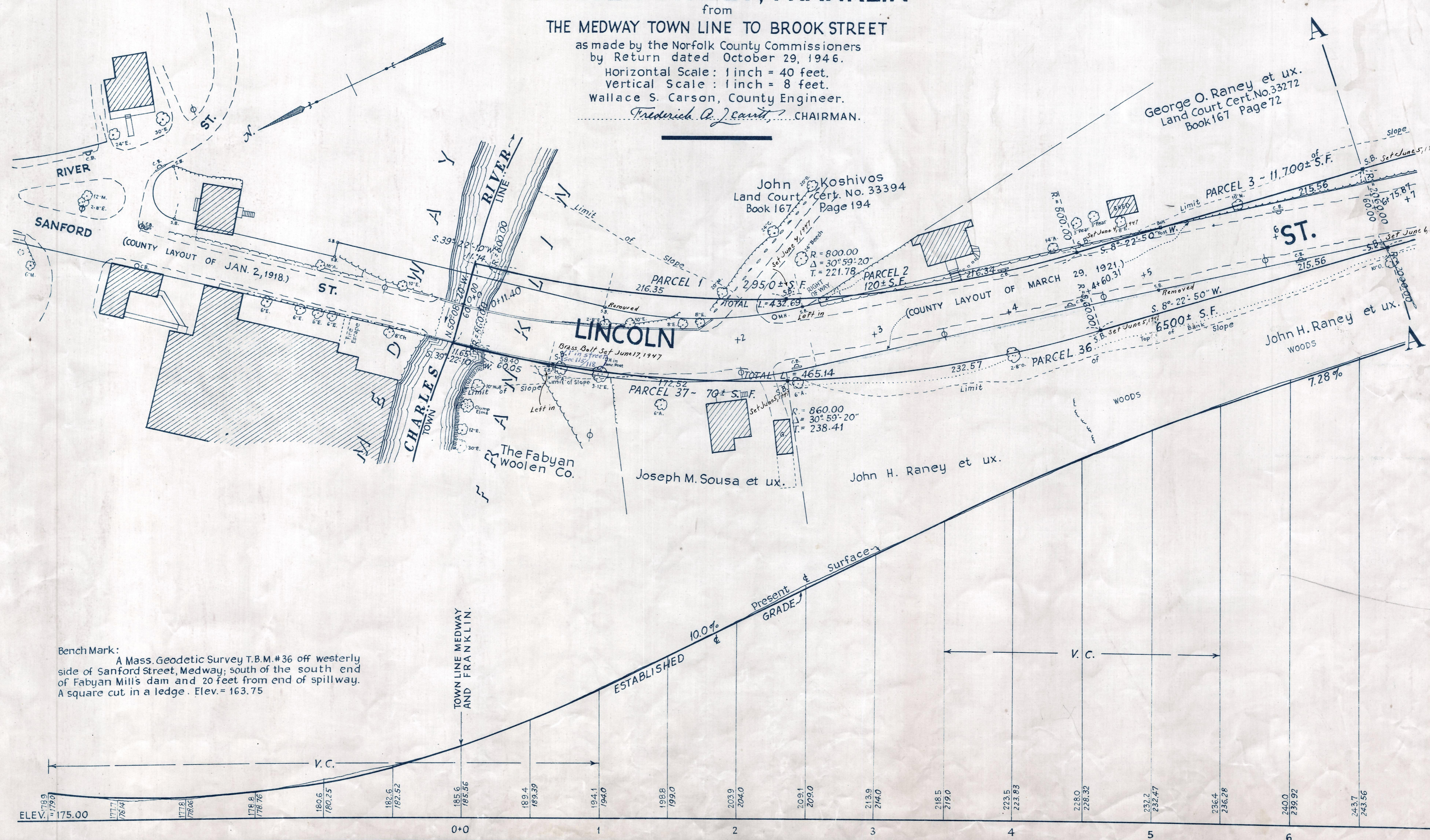
John Koshivos
 Land Court Cert. No. 33394
 Book 167 Page 194

John H. Raney et ux.
 WOODS

The Fabyan
 Woolen Co.

Joseph M. Sousa et ux.

John H. Raney et ux.



Bench Mark:
 A Mass. Geodetic Survey T.B.M. #36 off westerly
 side of Sanford Street, Medway; south of the south end
 of Fabyan Mill's dam and 20 feet from end of spillway.
 A square cut in a ledge. Elev. = 163.75