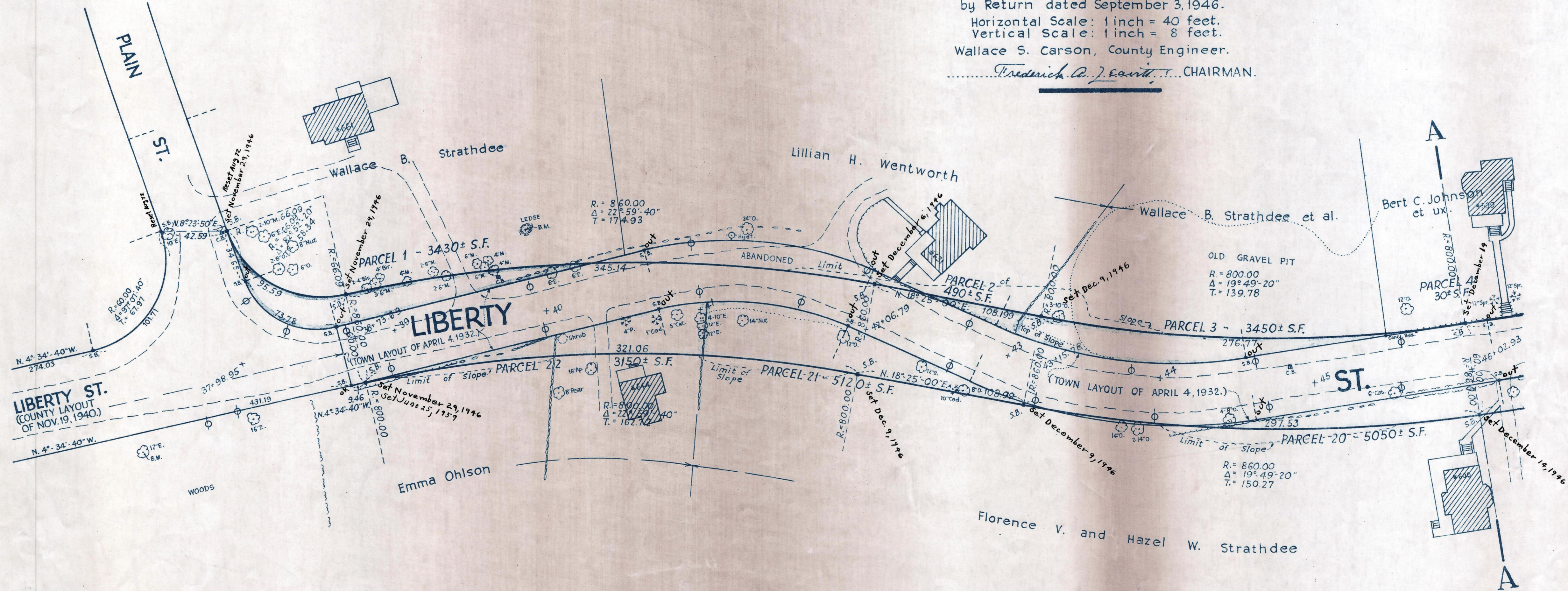
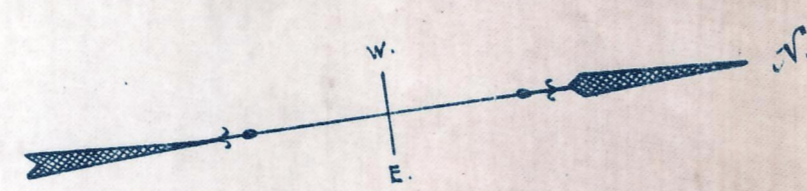


Plan and Profile
showing the Relocation and Widening
of a Portion of
LIBERTY STREET, BRAINTREE

from
PLAIN STREET TO MIDDLE STREET
as made by the Norfolk County Commissioners
by Return dated September 3, 1946.
Horizontal Scale: 1 inch = 40 feet.
Vertical Scale: 1 inch = 8 feet.
Wallace S. Carson, County Engineer.
Frederick A. J. Smith, CHAIRMAN.



Bench Mark:
A Mass. Geodetic Survey
T.B.M.# 244 on Liberty St., Braintree,
about 800 ft. northerly from Grove St.
A chiselled square on northwesterly
corner of the bottom step of the
northeasterly wing wall of railroad
abutment. Elev. = 140.46

B.M. - Spike in 12 inch Elm. Sta. 37+25;
43 ft. right. Elev. = 80.78

B.M. - Chiselled square
on ledge. Sta. 39+90;
55 ft. left. Elev. = 84.72

