

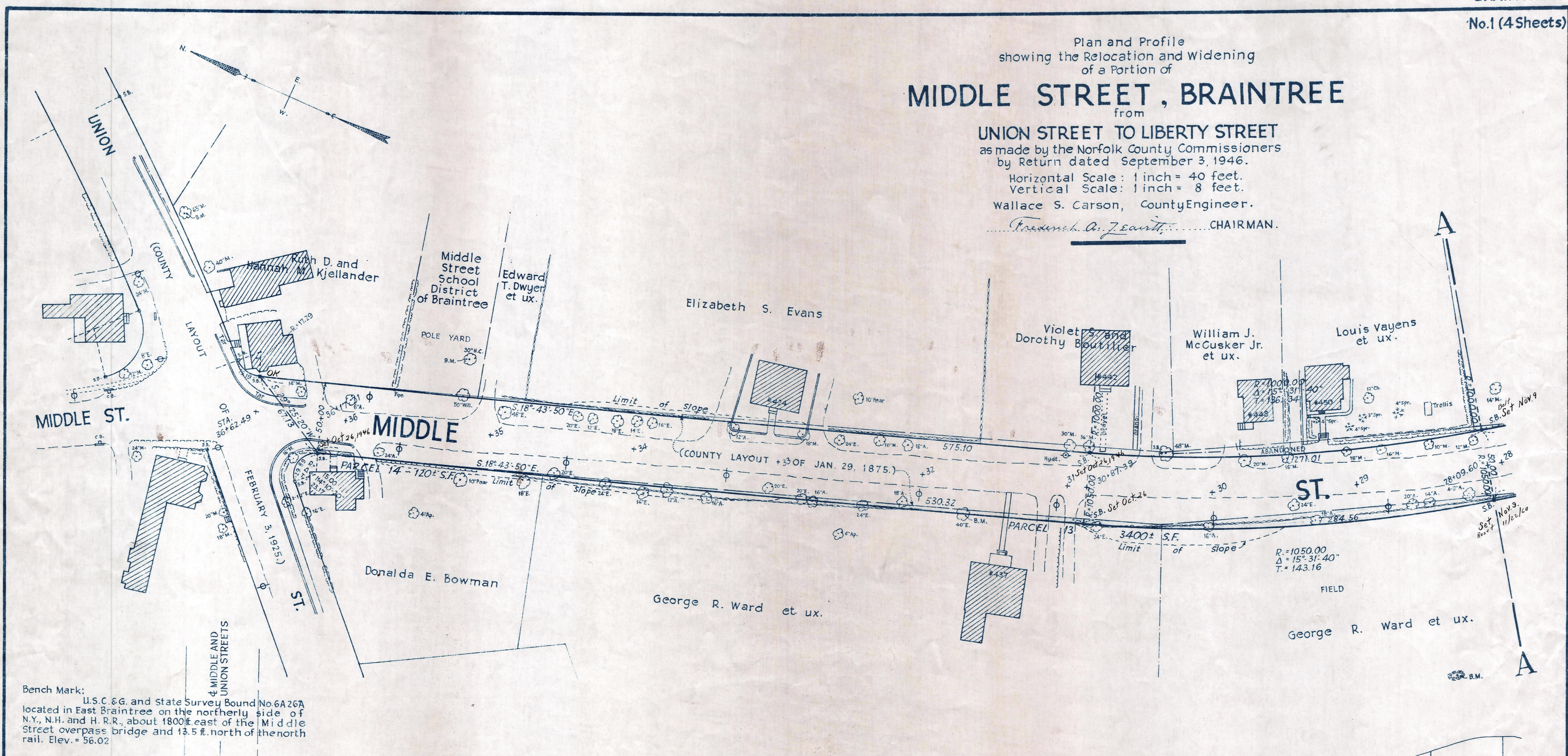
Plan and Profile
showing the Relocation and Widening
of a Portion of
MIDDLE STREET, BRAINTREE

from
UNION STREET TO LIBERTY STREET
as made by the Norfolk County Commissioners
by Return dated September 3, 1946.

Horizontal Scale: 1 inch = 40 feet.
Vertical Scale: 1 inch = 8 feet.

Wallace S. Carson, County Engineer.

Fredrick A. J. Earhart, CHAIRMAN.



Bench Mark:
U.S.C. & G. and State Survey Bound No. 6A26A
located in East Braintree on the northerly side of
N.Y., N.H. and H.R.R., about 1800 ft. east of the Middle
Street overpass bridge and 13.5 ft. north of the north
rail. Elev. = 56.02

B.M. - Spike in 65 inch Maple on
southerly side of Union Street
and 150 ft. easterly of the center
line of Middle Street. Elev. = 113.04

B.M. - Chiselled square
at top of ledge. Sta. 28+
44; 142 ft. left. Elev. = 115.38

