

Plan and Profile showing the Relocation and Widening of

# EAST STREET, SHARON

from MASSAPOAG AVENUE AND POND STREET TO MOUNTAIN STREET

as made by the Norfolk County Commissioners by Return dated Sept. 11, 1945.

Horizontal Scale: 1 inch = 40 feet.  
Vertical Scale: 1 inch = 8 feet.

Wallace S. Carson, County Engineer.

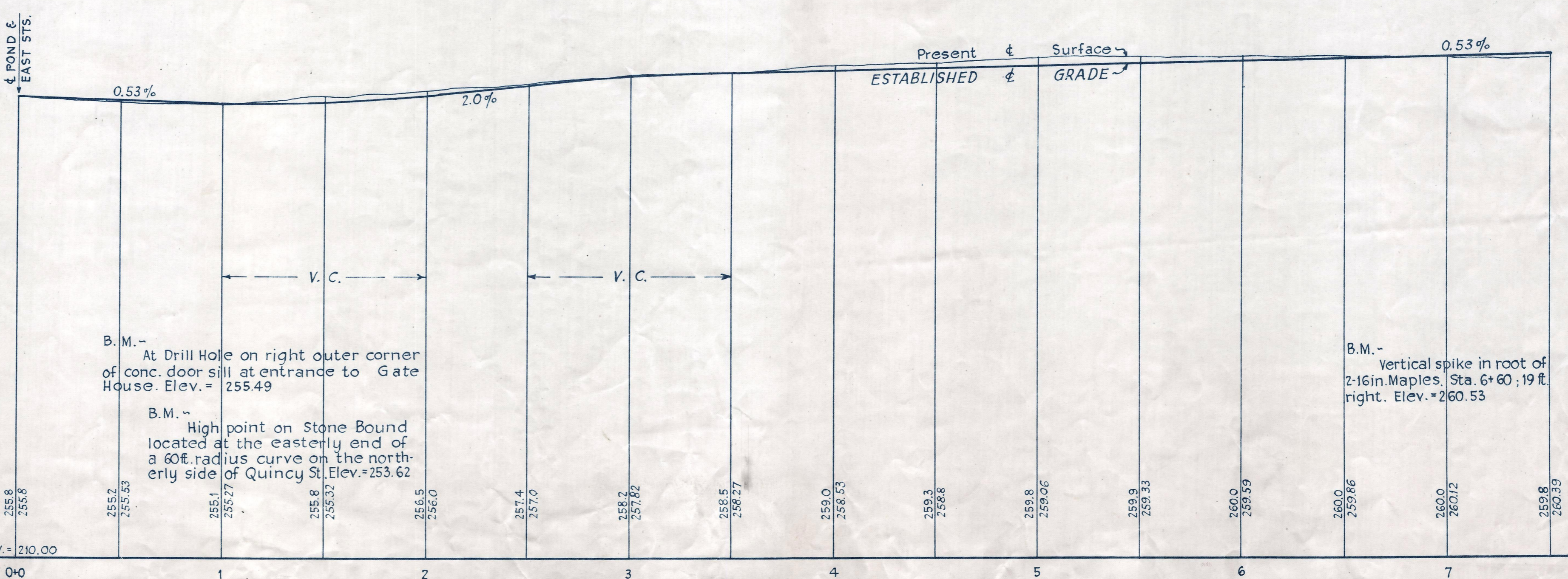
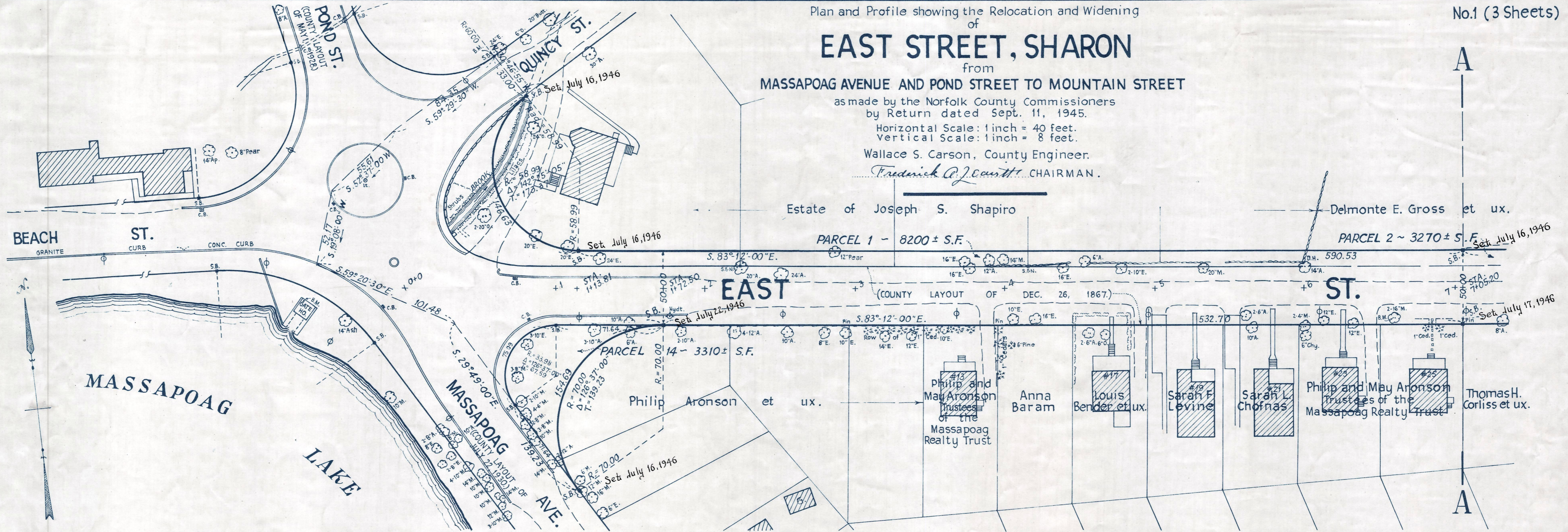
*Frederick A. J. Courtt* CHAIRMAN.

Estate of Joseph S. Shapiro

Delmonte E. Gross et ux.

PARCEL 1 - 8200 ± S.F.

PARCEL 2 - 3270 ± S.F.



Bench Mark -  
A U.S.C. & G.S. and State Survey Bound No. 11 CA on South Main St. at the intersection of East Foxboro and Gun House Streets, 66 ft. southeast of the southwest corner of garage; 100.2 ft. south of the southwest corner of house #247; 65 ft. south from a 30 inch Maple. Elev. = 273.55

B.M. -  
At Drill Hole on right outer corner of conc. door sill at entrance to Gate House. Elev. = 255.49

B.M. -  
High point on Stone Bound located at the easterly end of a 60 ft. radius curve on the northerly side of Quincy St. Elev. = 253.62

B.M. -  
Vertical spike in root of 2-16 in. Maples, Sta. 6+60; 19 ft. right. Elev. = 260.53