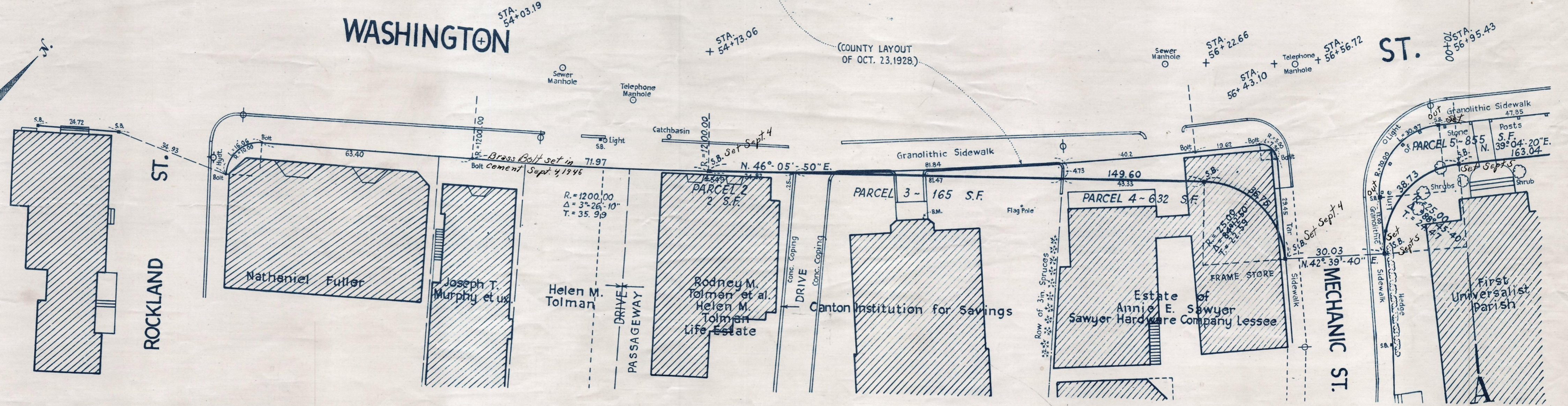
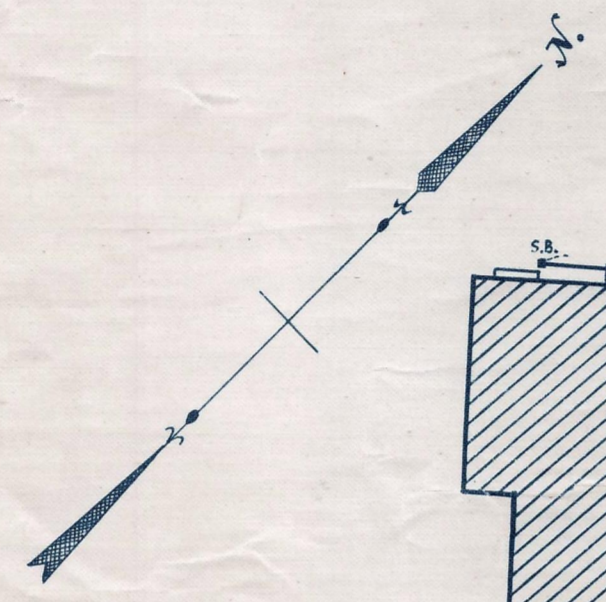
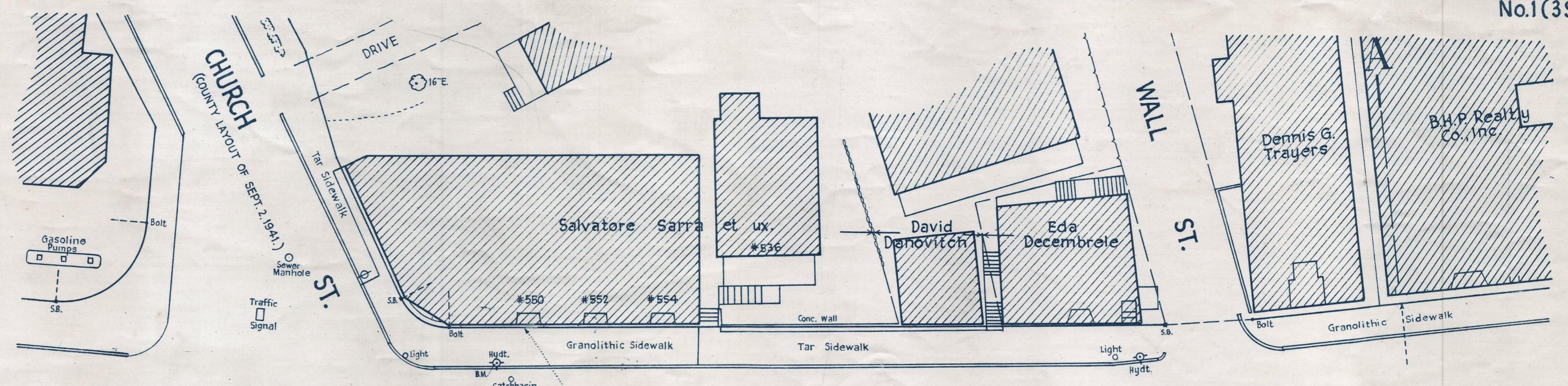


Plan and Profile
showing the Relocation and Widening
of a portion of
WASHINGTON STREET, CANTON
between
CHURCH STREET AND REVERE STREET
as made by the Norfolk County Commissioners
by Return dated November 28, 1944.
Horizontal Scale: 1 inch = 20 feet.
Vertical Scale: 1 inch = 4 feet.
Wallace S. Carson, County Engineer.
Frederick A. J. Ewart, CHAIRMAN.



ESTABLISHED GRADE		Present		Surface		0.85%	
104.5	104.1	105.0	105.8	106.2	106.7	107.2	
ELEV. = 90.00	104.0	104.85	105.70	106.55	106.98	107.4	

Bench Mark:
U.S. Coast and Geodetic
State Survey Bound No. 11 BJ located on the
N.Y., N.H. & H.R.R. (Providence Div.) 160 ft. south
of the face of the south abutment of the
viaduct over Neponset Street and 9 ft. east
of the most easterly rail. Elev. = 117.37

B.M. - Hydrant Sta. 54+76
23 ft. left. Elev. = 108.17

B.M. - Left outer corner of door sill
to Canton Institution for Savings,
Sta. 55+37, 48 ft. right. Elev. = 107.20