

Plan and Profile
showing the Relocation and Widening
of a portion of

EAST STREET, WESTWOOD

between
STRAFFORD ROAD AND ELM STREET

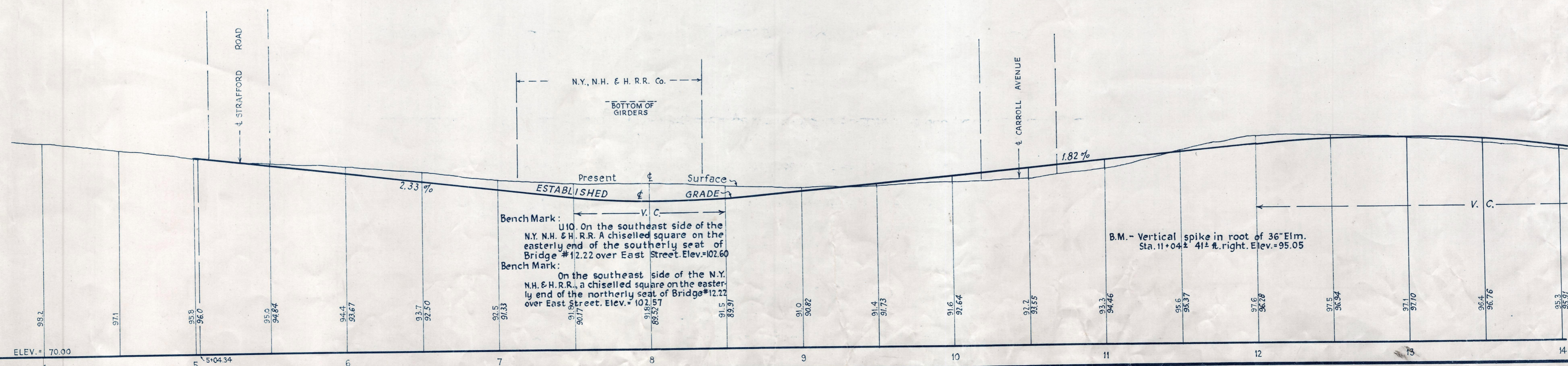
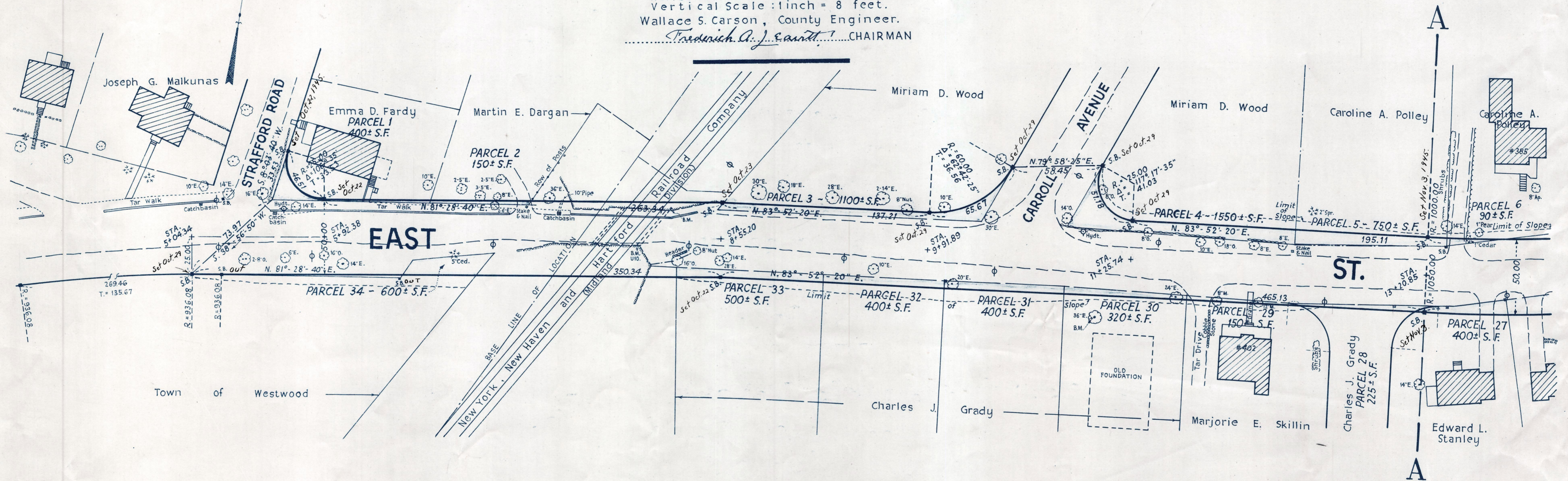
as made by the Norfolk County Commissioners
by Return dated October 3, 1944.

Horizontal Scale: 1 inch = 40 feet.
Vertical Scale: 1 inch = 8 feet.

Wallace S. Carson, County Engineer.

Frederick A. J. Caswell, CHAIRMAN

Note: Poles indicated thus: ϕ



CRIF. ORDER RELOCATION BK. 2519 P. 6. 490 DEC. 8, 1944
TKG. BK. 2513 P. 6. 268 ; PL. BK. 134 , PLS. 438 TO 441 INCL. REC. OCT. 27, 1944

Date of Entry Nov. 21, 1944