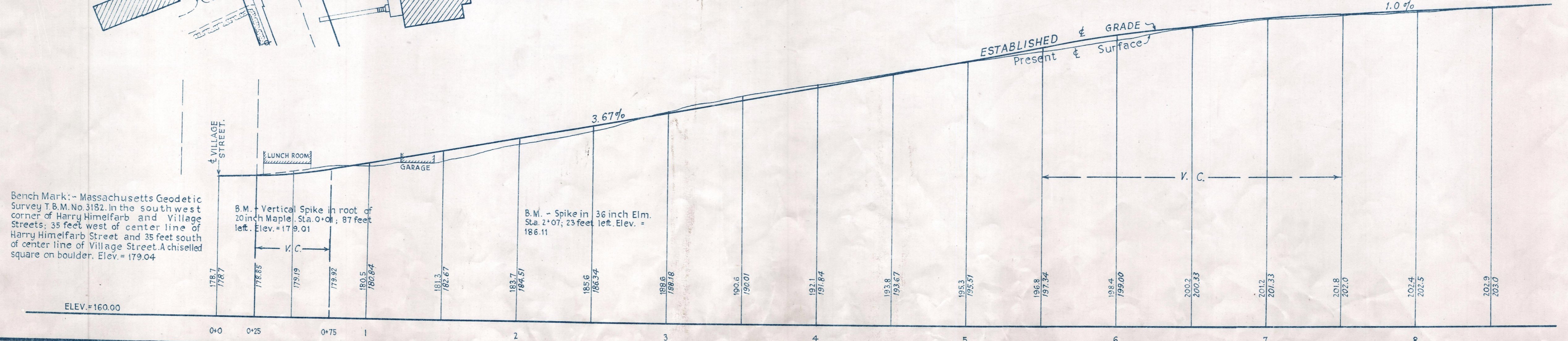
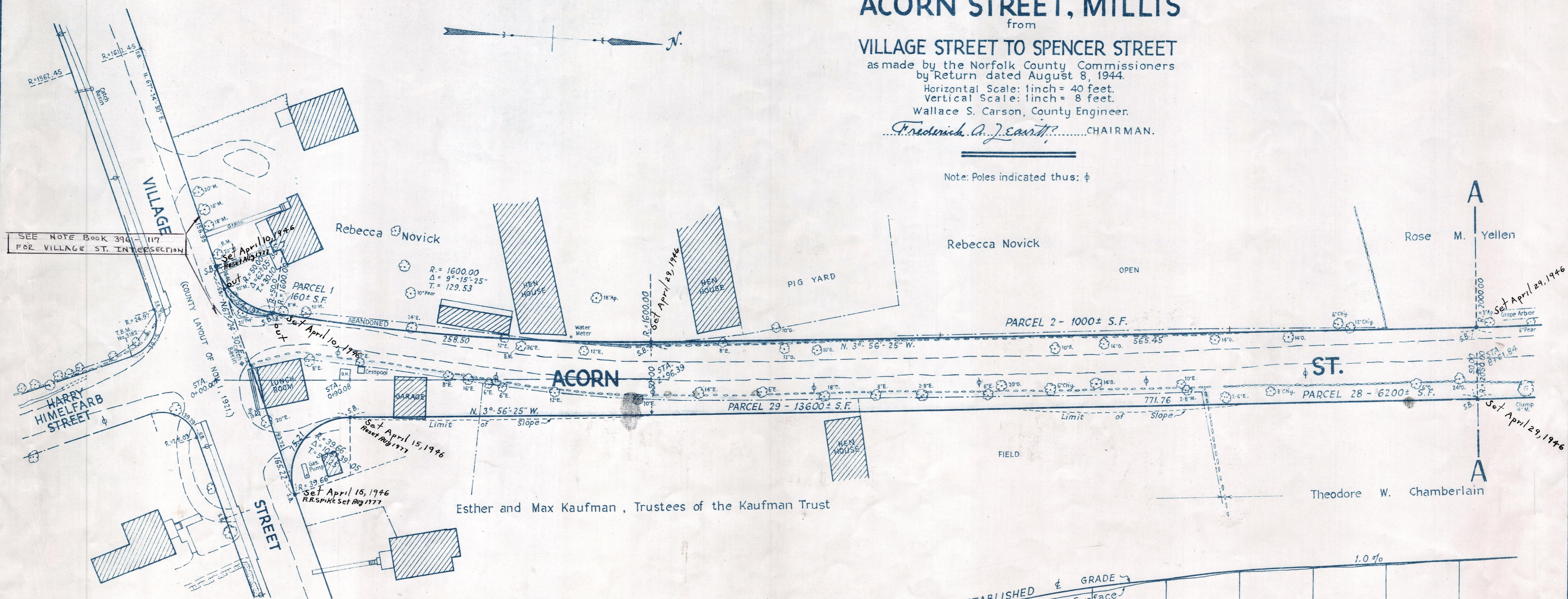


Plan and Profile
showing the Relocation and Widening
of
ACORN STREET, MILLIS
from
VILLAGE STREET TO SPENCER STREET
as made by the Norfolk County Commissioners
by Return dated August 8, 1944.
Horizontal Scale: 1inch = 40 feet.
Vertical Scale: 1inch = 8 feet.
Wallace S. Carson, County Engineer.
Frederick A. J. Savitt, CHAIRMAN.

Note: Poles indicated thus: φ



Bench Mark: - Massachusetts Geodetic Survey T.B.M. No. 3182. In the south west corner of Harry Himelfarb and Village Streets; 35 feet west of center line of Harry Himelfarb Street and 35 feet south of center line of Village Street. A chiselled square on boulder. Elev. = 179.04