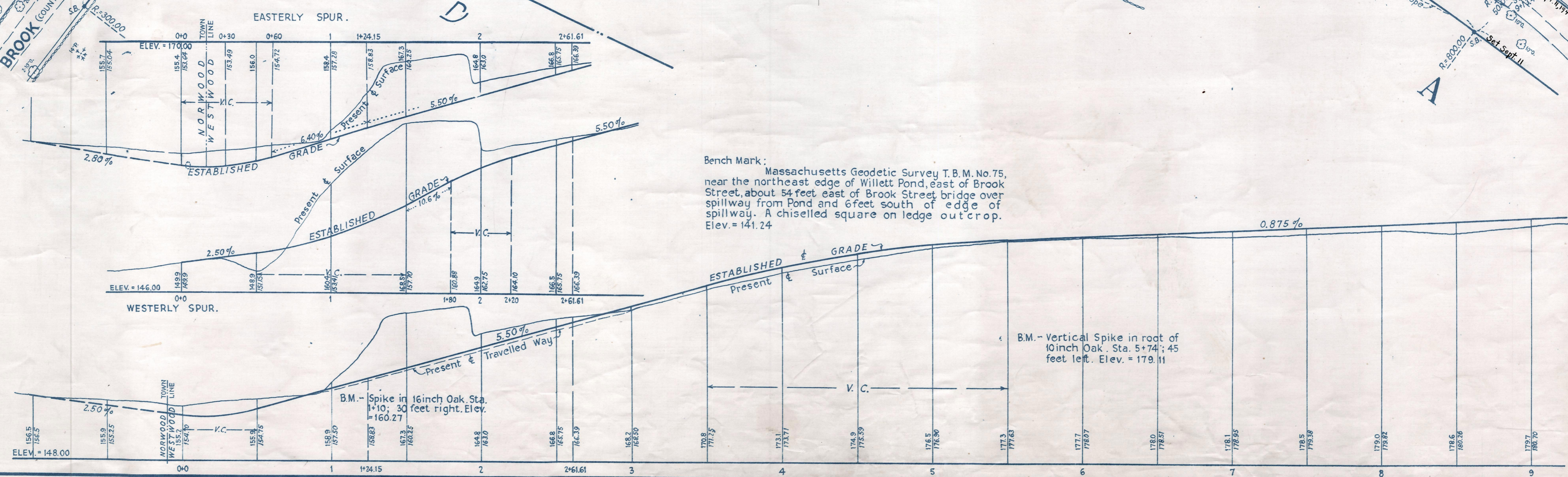
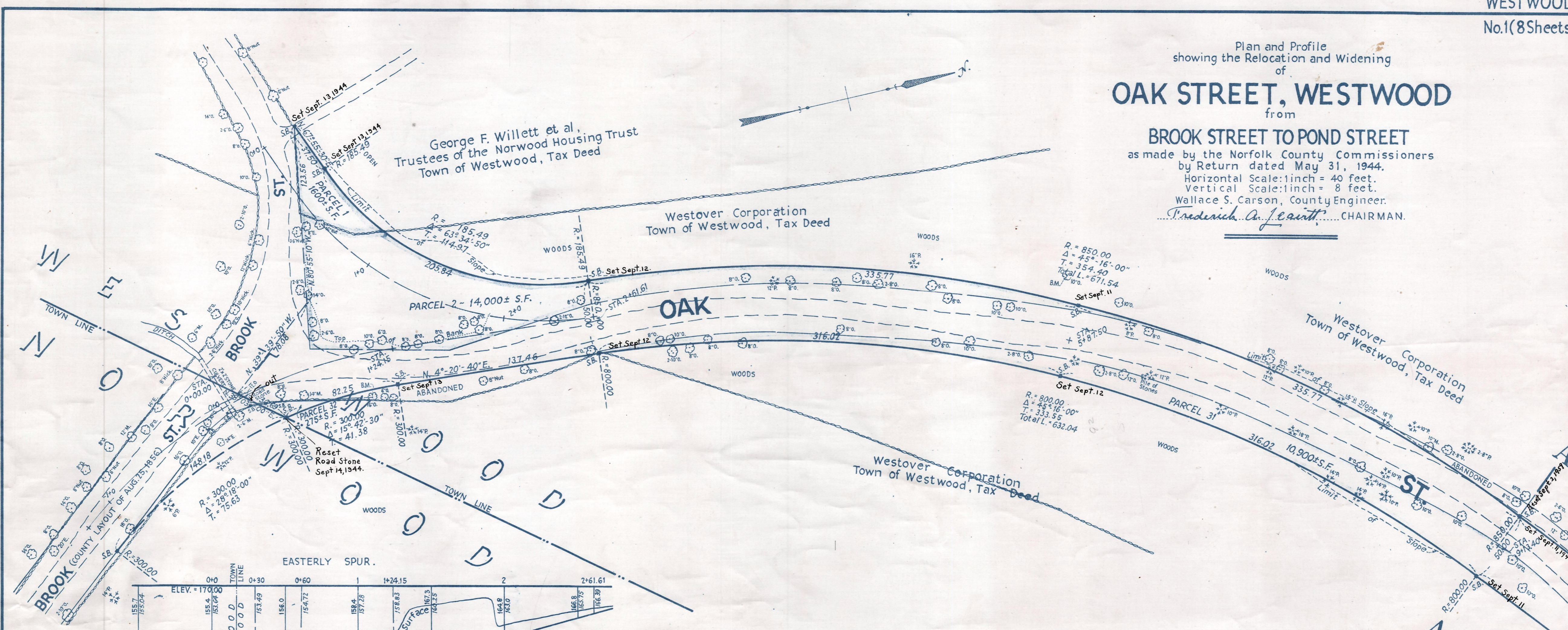
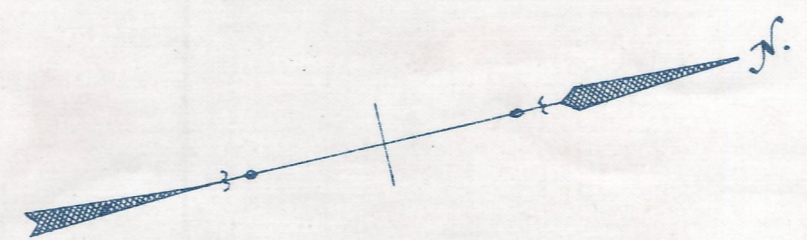


Plan and Profile
showing the Relocation and Widening
of
OAK STREET, WESTWOOD
from
BROOK STREET TO POND STREET
as made by the Norfolk County Commissioners
by Return dated May 31, 1944.
Horizontal Scale: 1 inch = 40 feet.
Vertical Scale: 1 inch = 8 feet.
Wallace S. Carson, County Engineer.
Frederick A. Leavitt, CHAIRMAN.



Bench Mark:
Massachusetts Geodetic Survey T.B.M. No. 75,
near the northeast edge of Willett Pond, east of Brook
Street, about 54 feet east of Brook Street bridge over
spillway from Pond and 6 feet south of edge of
spillway. A chiselled square on ledge outcrop.
Elev. = 141.24