

Note; Poles indicated thus: φ

Plan and Profile
showing the Relocation and Widening
of

PARK STREET, NORFOLK

from MAIN STREET (at the N.Y., N.H. & H.R.R.) TO THE WRENTHAM TOWN LINE

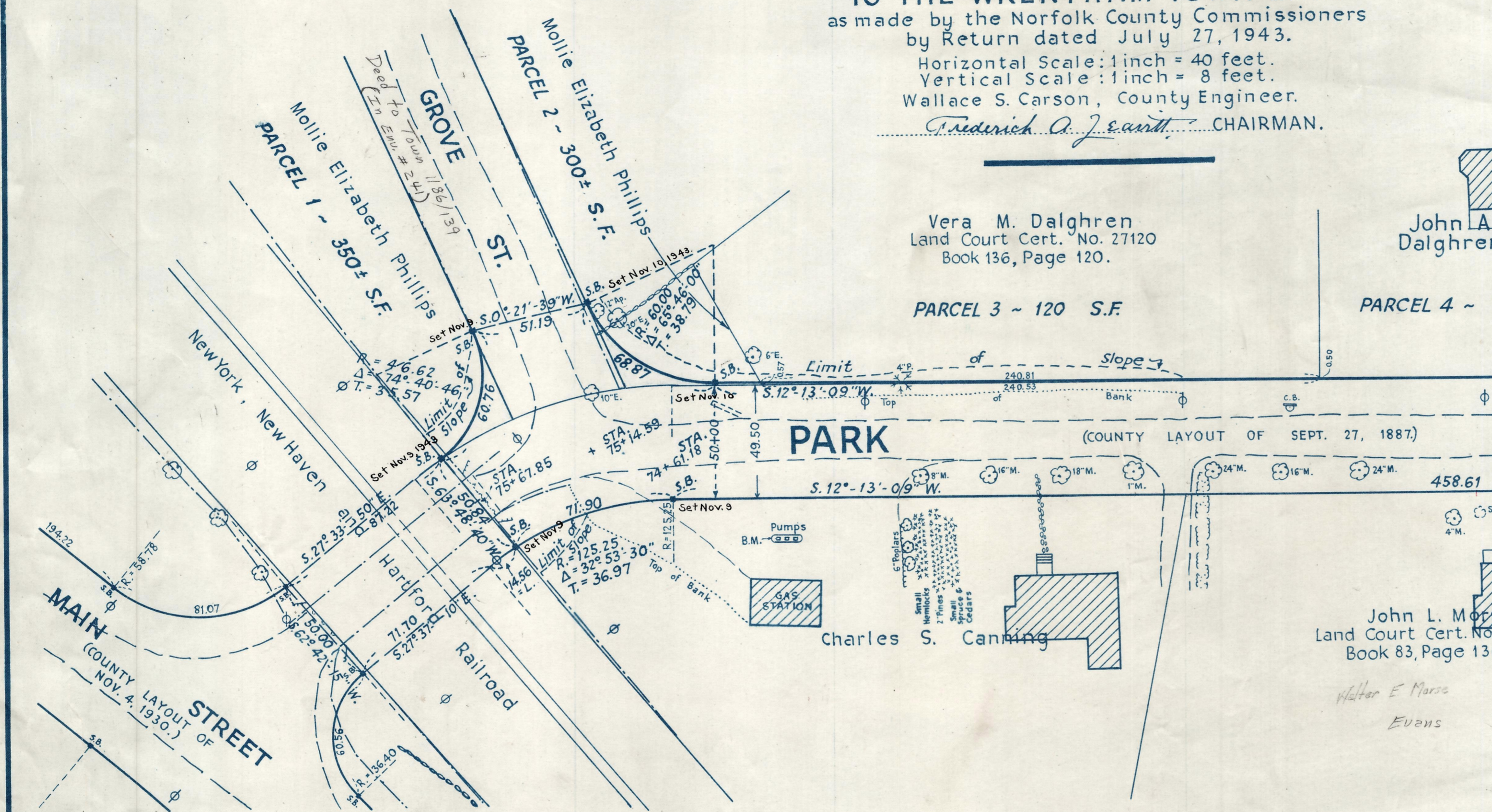
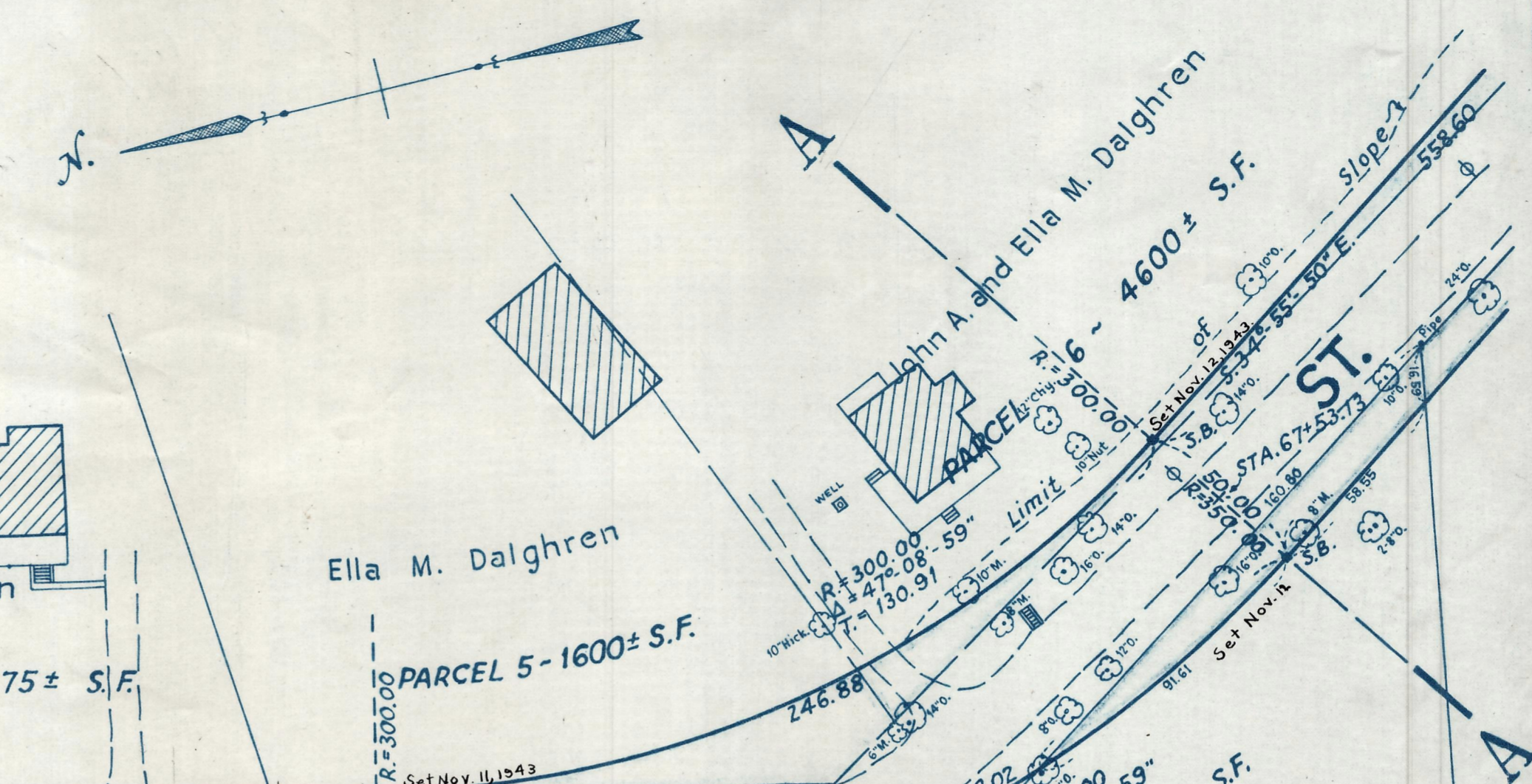
as made by the Norfolk County Commissioners
by Return dated July 27, 1943.

Horizontal Scale: 1 inch = 40 feet.

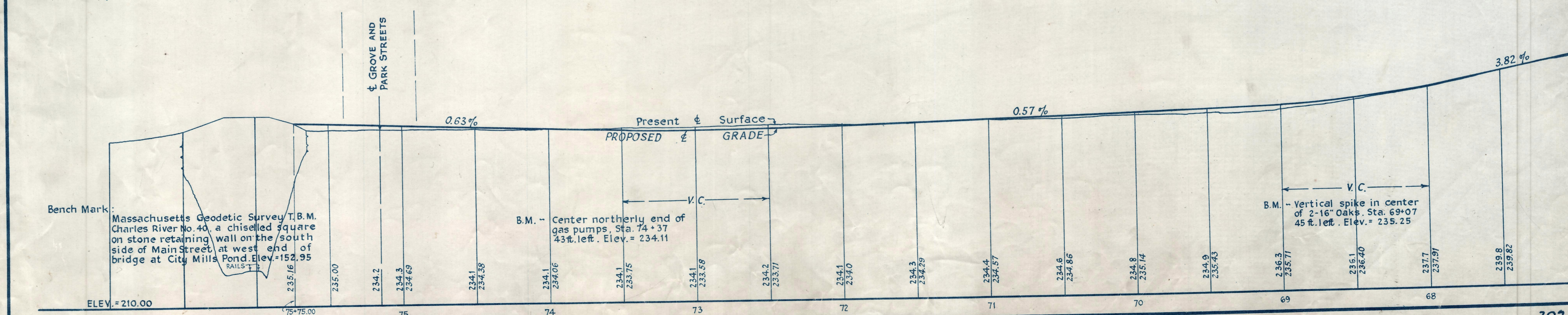
Vertical Scale: 1 inch = 8 feet.

Wallace S. Carson, County Engineer.

Frederick A. J. Smith, CHAIRMAN.



PARK STREET (COUNTY LAYOUT OF SEPT. 27, 1887)



Bench Mark:
Massachusetts Geodetic Survey T.B.M.
Charles River No. 40, a chiselled square
on stone retaining wall on the south
side of Main Street at west end of
bridge at City Mills Pond. Elev. = 152.95

B.M. - Center northerly end of
gas pumps, Sta. 74+37
43 ft. left. Elev. = 234.11