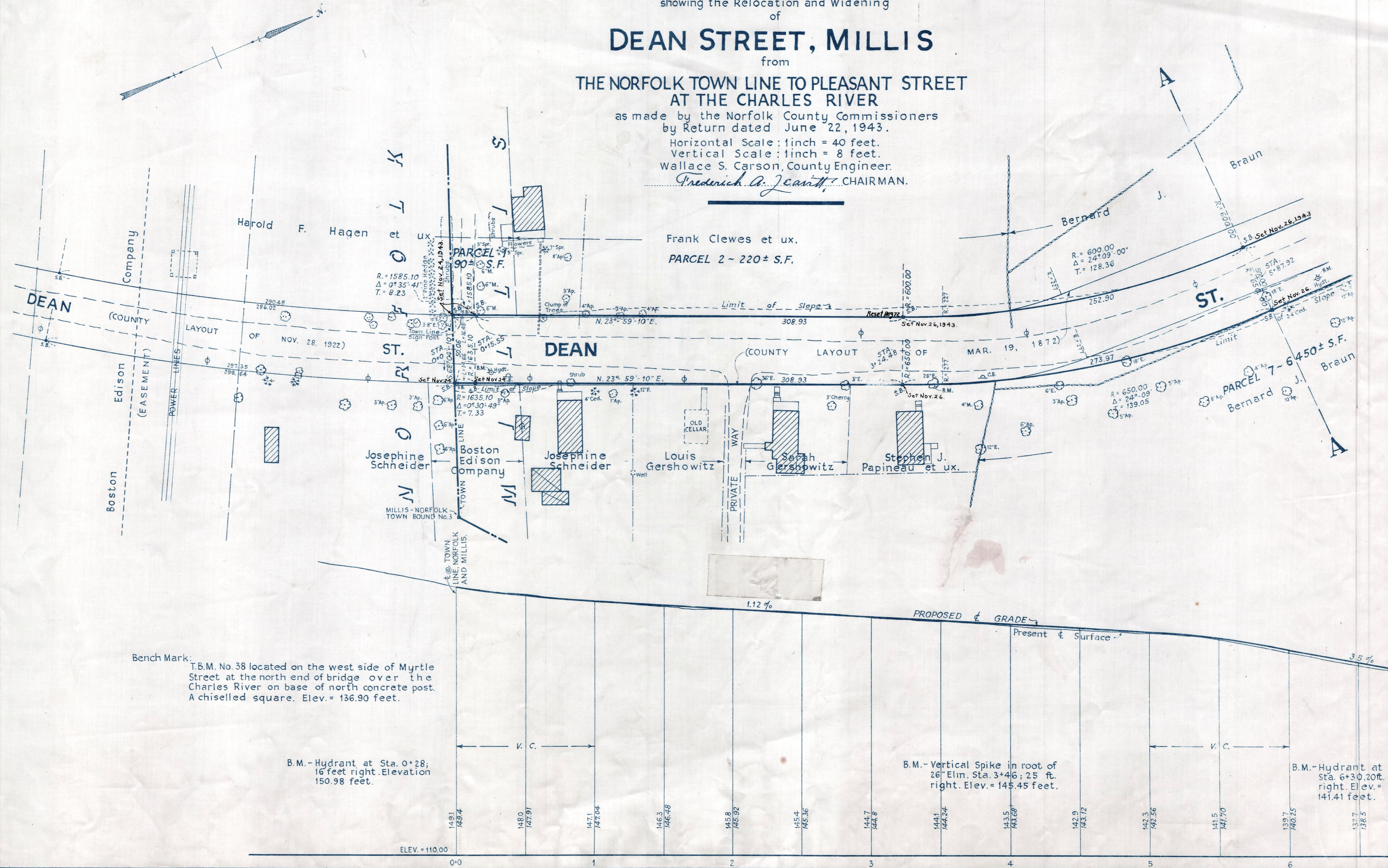


Note: Poles indicated thus: ϕ

Plan and Profile
showing the Relocation and Widening
of
DEAN STREET, MILLIS
from
THE NORFOLK TOWN LINE TO PLEASANT STREET
AT THE CHARLES RIVER
as made by the Norfolk County Commissioners
by Return dated June 22, 1943.
Horizontal Scale: 1 inch = 40 feet.
Vertical Scale: 1 inch = 8 feet.
Wallace S. Carson, County Engineer.
Fredrick A. J. Carthy, CHAIRMAN.



Bench Mark:
T.B.M. No 38 located on the west side of Myrtle Street at the north end of bridge over the Charles River on base of north concrete post. A chiselled square. Elev. = 136.90 feet.

B.M. - Hydrant at Sta. 0+28; 16 feet right. Elevation 150.98 feet.

B.M. - Vertical Spike in root of 26" Elm. Sta. 3+46; 25 ft. right. Elev. = 145.45 feet.

B.M. - Hydrant at Sta. 6+30.20ft. right. Elev. = 141.41 feet.