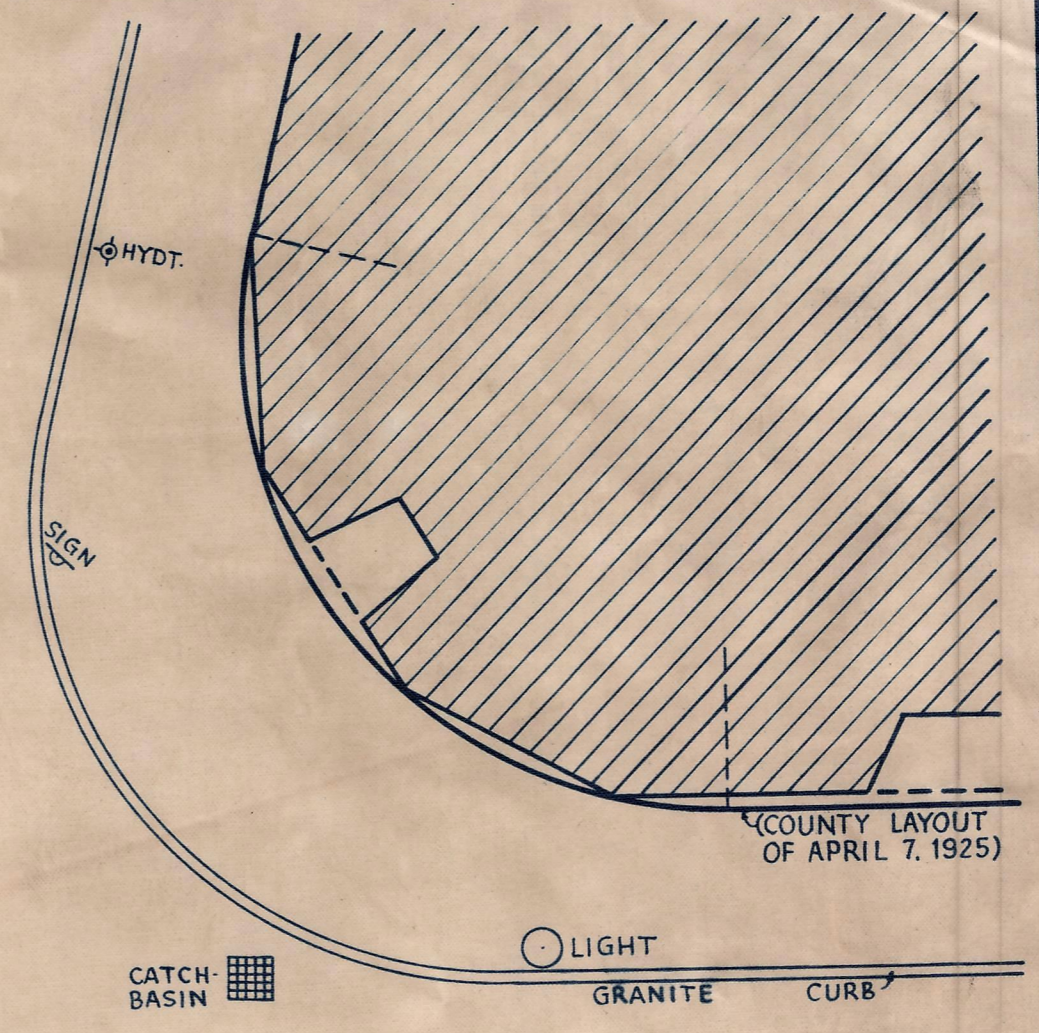
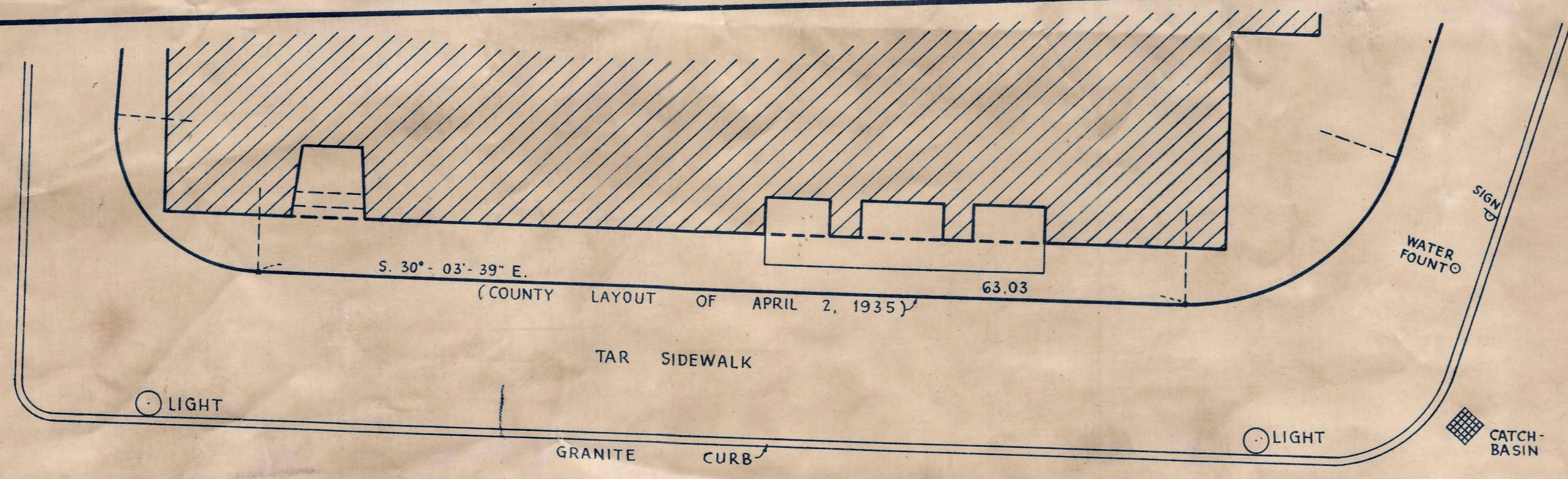


DEAN AVE.

DEPOT ST.

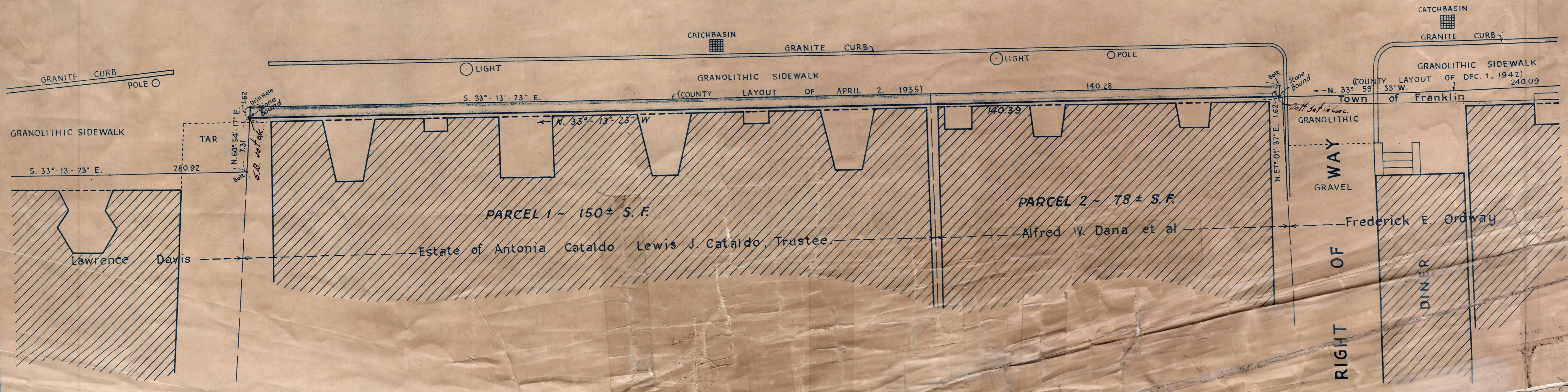
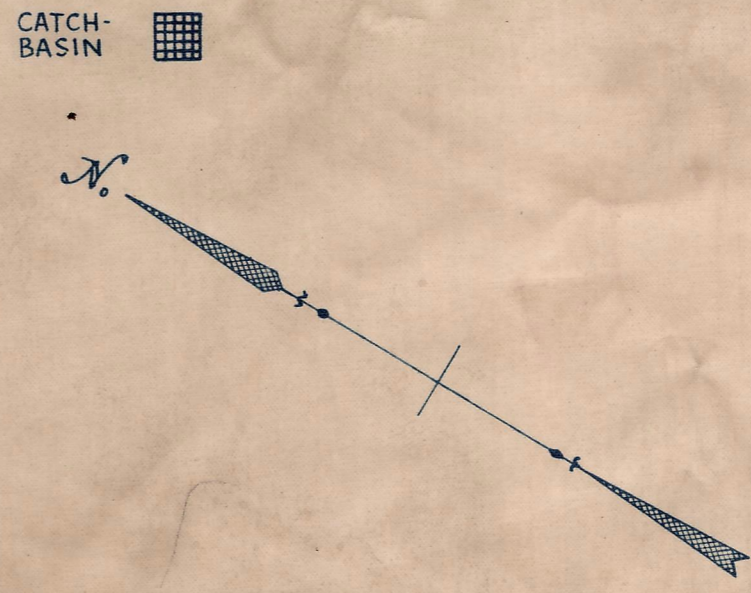


Plan showing  
the Relocation and Widening  
of a portion of  
**MAIN STREET  
FRANKLIN**

between  
**DEAN AVENUE AND DEPOT STREET**  
as made by the Norfolk County Commissioners  
by Return dated March 23, 1943.  
Scale: 1 inch = 8 feet.  
Wallace S. Carson, County Engineer.  
*Frederick A. Jeanet*, CHAIRMAN.

MAIN

STREET



Date of Entry Sept. 2, 1943

TKG. BK. 2436, PG. 259; PL. BK. 131, PL. 84 REC. APR. 14, 1943