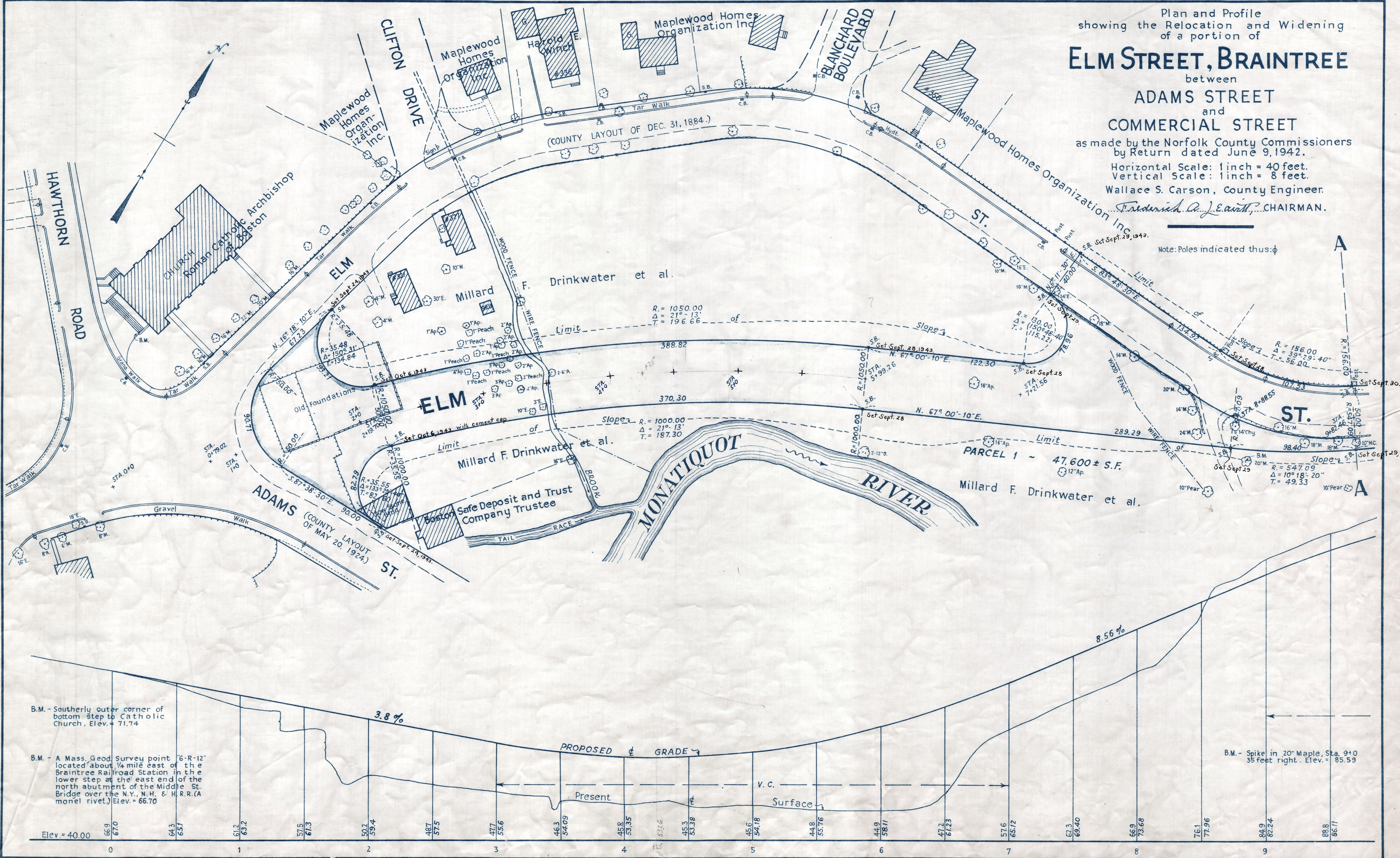


Plan and Profile
showing the Relocation and Widening
of a portion of
ELM STREET, BRAINTREE
between
ADAMS STREET
and
COMMERCIAL STREET
as made by the Norfolk County Commissioners
by Return dated June 9, 1942.
Horizontal Scale: 1 inch = 40 feet.
Vertical Scale: 1 inch = 8 feet.
Wallace S. Carson, County Engineer.
Fredrick C. J. Smith, CHAIRMAN.



B.M. - Southerly outer corner of bottom step to Catholic Church, Elev. = 71.74

B.M. - A Mass. Geod. Survey point located about 1/4 mile east of the Braintree Railroad Station in the lower step at the east end of the north abutment of the Middle St. Bridge over the N.Y., N.H. & H.R.R. (A monel rivet.) Elev. = 66.70

B.M. - Spike in 20' Maple, Sta. 9+0 35 feet right. Elev. = 85.59

EASE.

Date of Entry Sept 8, 1943