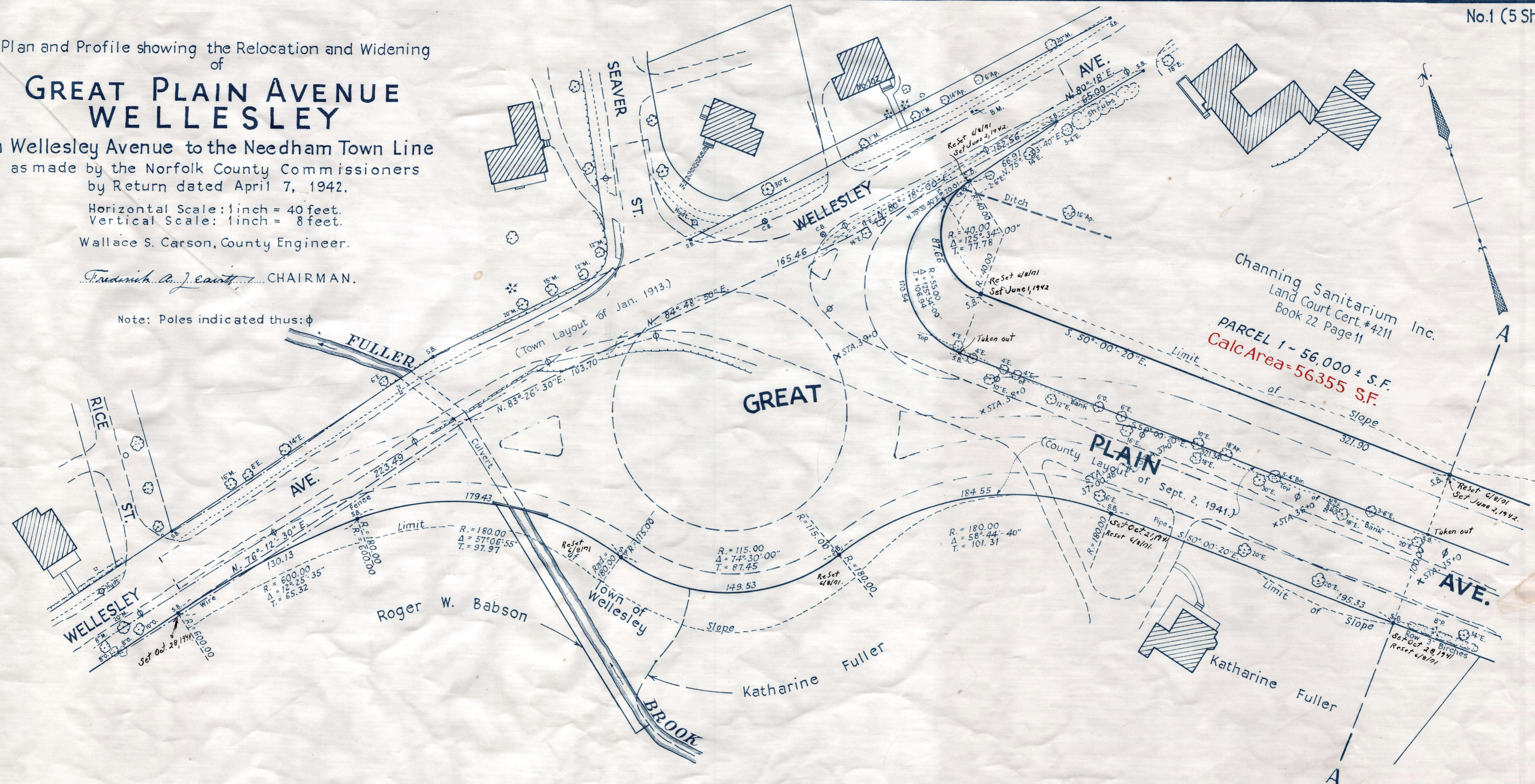


Plan and Profile showing the Relocation and Widening of
**GREAT PLAIN AVENUE
 WELLESLEY**
 from Wellesley Avenue to the Needham Town Line
 as made by the Norfolk County Commissioners
 by Return dated April 7, 1942.
 Horizontal Scale: 1 inch = 40 feet.
 Vertical Scale: 1 inch = 8 feet.
 Wallace S. Carson, County Engineer.

Frederick A. J. Carver CHAIRMAN.

Note: Poles indicated thus: ϕ



	37 NORTHEASTERLY ROADWAY 36	35
Elev. =	150.00	
← APPROACH TO TRAFFIC CIRCLE →	135.9 136.43	136.2 139.81
	134.8 137.26	
	133.2 138.12	
	133.6 138.97	
		1.69%
	Present	surface
	← APPROACH TO TRAFFIC CIRCLE →	
	136.40	138.04 138.57
Elev. =	130.00	
	136.82	
	137.17 137.39	
	137.45 137.95	
		1.12%
	Present	Surface
		37 SOUTHWESTERLY ROADWAY 36
		35

Bench Mark: A U.S.C. & G. and State Survey Bound No. 28Y located on the northerly side of Wellesley Ave. 229 ft. easterly of ϕ of Seaver St. and 54.3 ft. southeasterly of southeast corner of house No. 102 on Wellesley Avenue. Elev. = 138.158