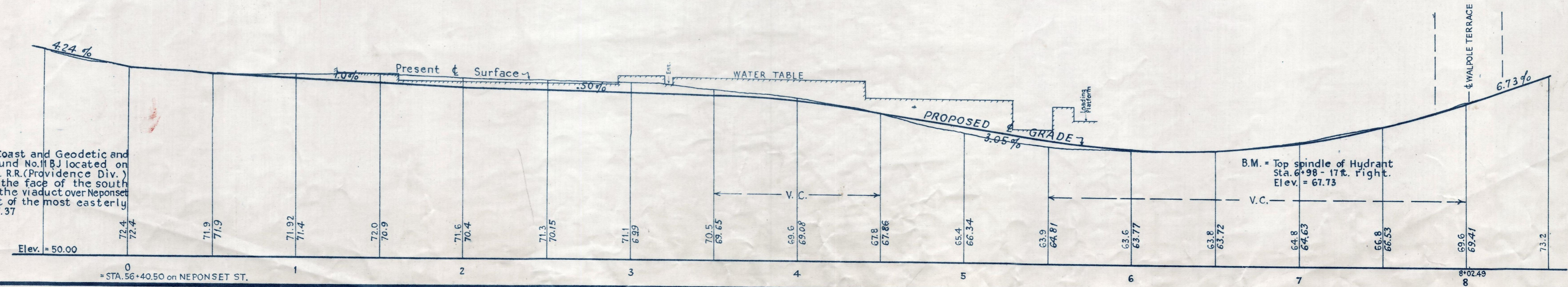
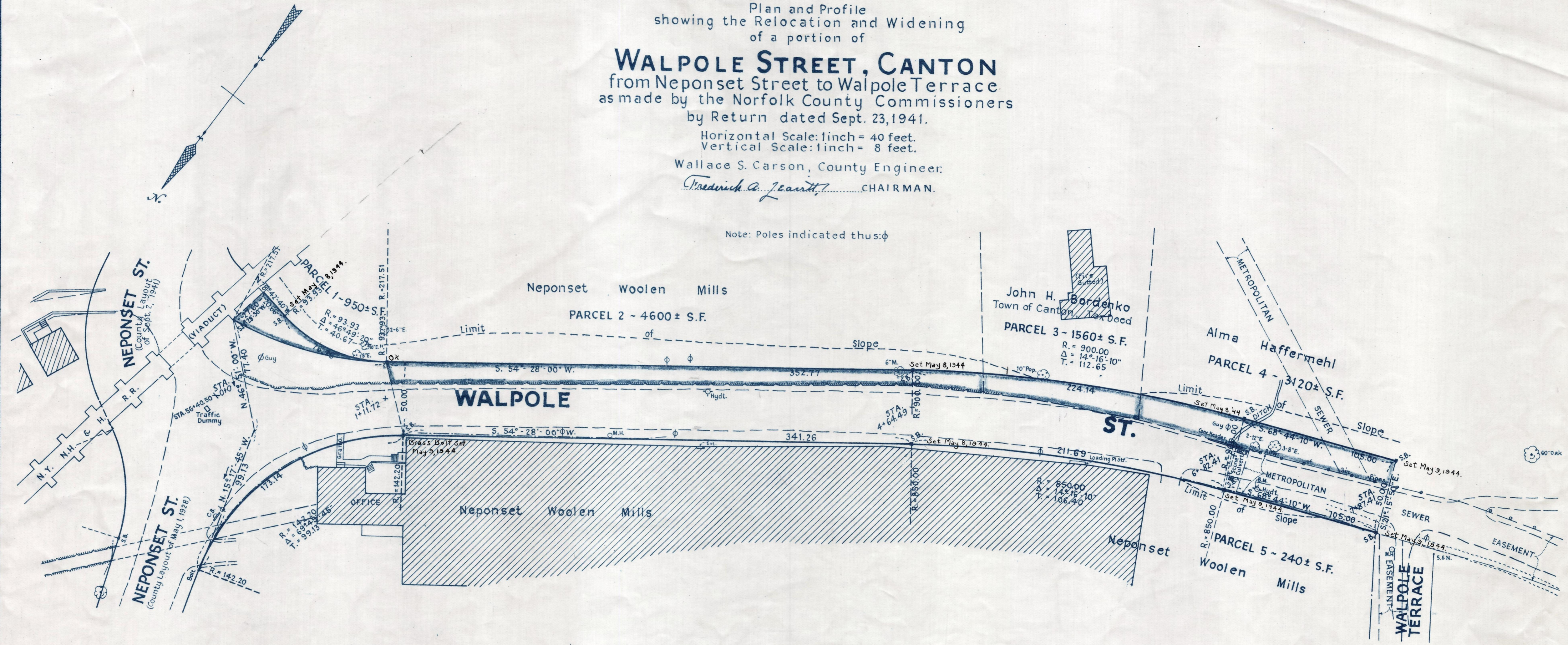


Plan and Profile
 showing the Relocation and Widening
 of a portion of
WALPOLE STREET, CANTON
 from Neponset Street to Walpole Terrace
 as made by the Norfolk County Commissioners
 by Return dated Sept. 23, 1941.

Horizontal Scale: 1 inch = 40 feet.
 Vertical Scale: 1 inch = 8 feet.
 Wallace S. Carson, County Engineer.
Fredrick A. Leavitt, CHAIRMAN.

Note: Poles indicated thus: ϕ



Bench Mark:
 U.S. Coast and Geodetic and
 State Survey Bound No. 11 BJ located on
 the N.Y. N.H. & H. R.R. (Providence Div.)
 160 ft. south of the face of the south
 abutment of the viaduct over Neponset
 St. and 9 ft. east of the most easterly
 rail. Elev. = 117.37

B.M. = Top spindle of Hydrant
 Sta. 6+98 - 17 ft. Right.
 Elev. = 67.73