

Plan and Profile
showing the Relocation and Widening of a portion of
PLAIN STREET, MILLIS
between Exchange Street, Curve Street
and Main Street

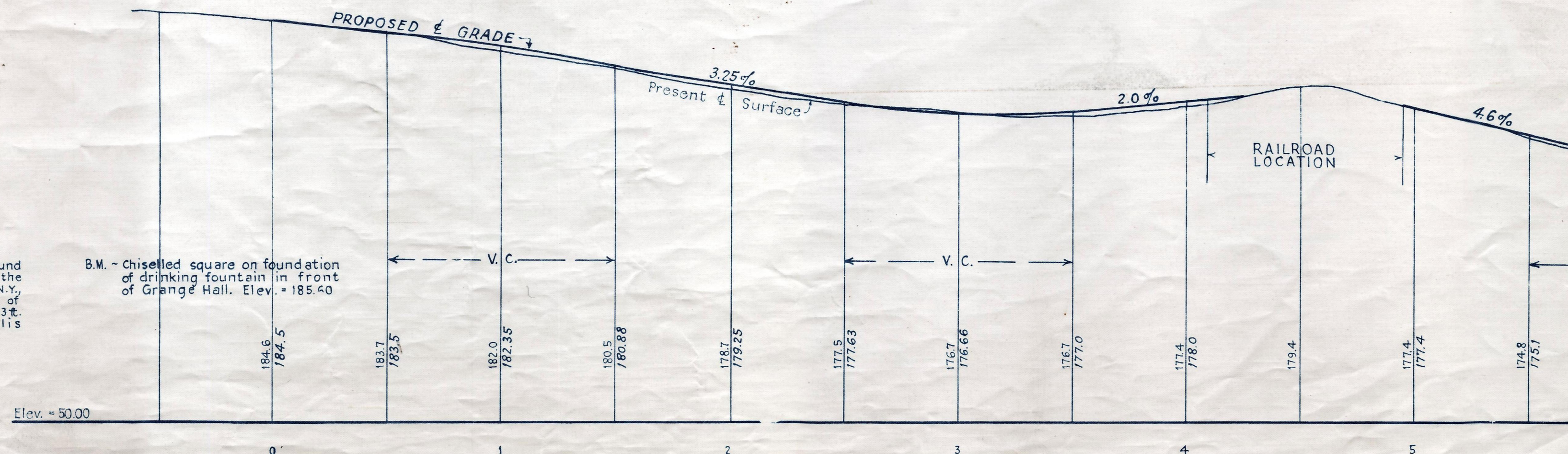
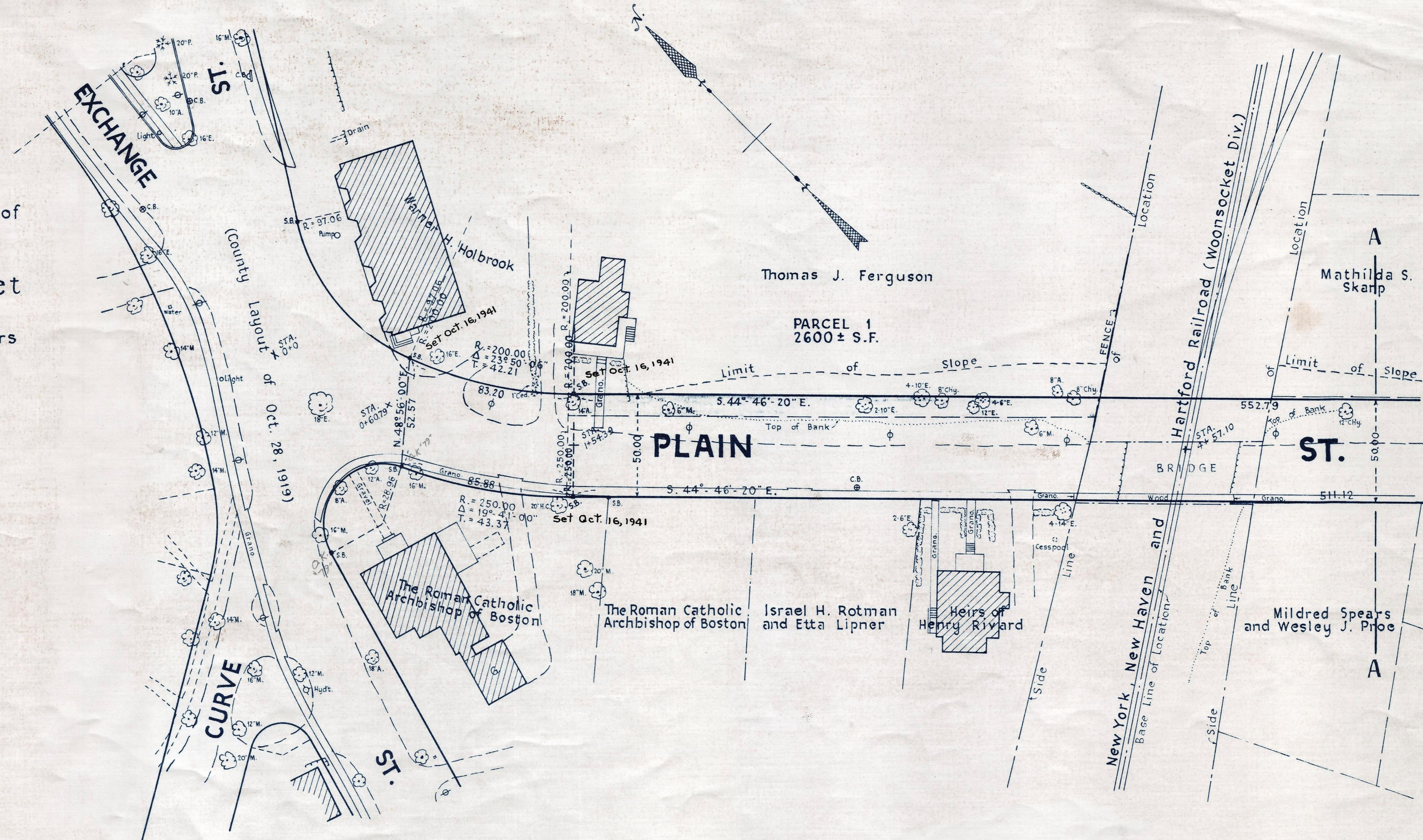
as made by the Norfolk County Commissioners
by Return dated Sept. 9, 1941.

Horizontal Scale: 1 inch = 40 feet.
Vertical Scale: 1 inch = 8 feet.

Wallace S. Carson, County Engineer.

Frederick A. J. Carvill, CHAIRMAN.

Note: Poles indicated thus: ϕ



Bench Mark:
U.S. Coast and Geodetic and State Survey Bound
No. 52F located at the northwest corner of the
intersection of Exchange Street and the N.Y.
N.H. & H.R.R. 25 ft. west of center line of
Exchange St., 10 ft. from west rail and 123 ft.
northeast of northeast corner of Millis
Railroad Station. Elev. = 162.65

B.M. - Chiselled square on foundation
of drinking fountain in front
of Grange Hall. Elev. = 185.40