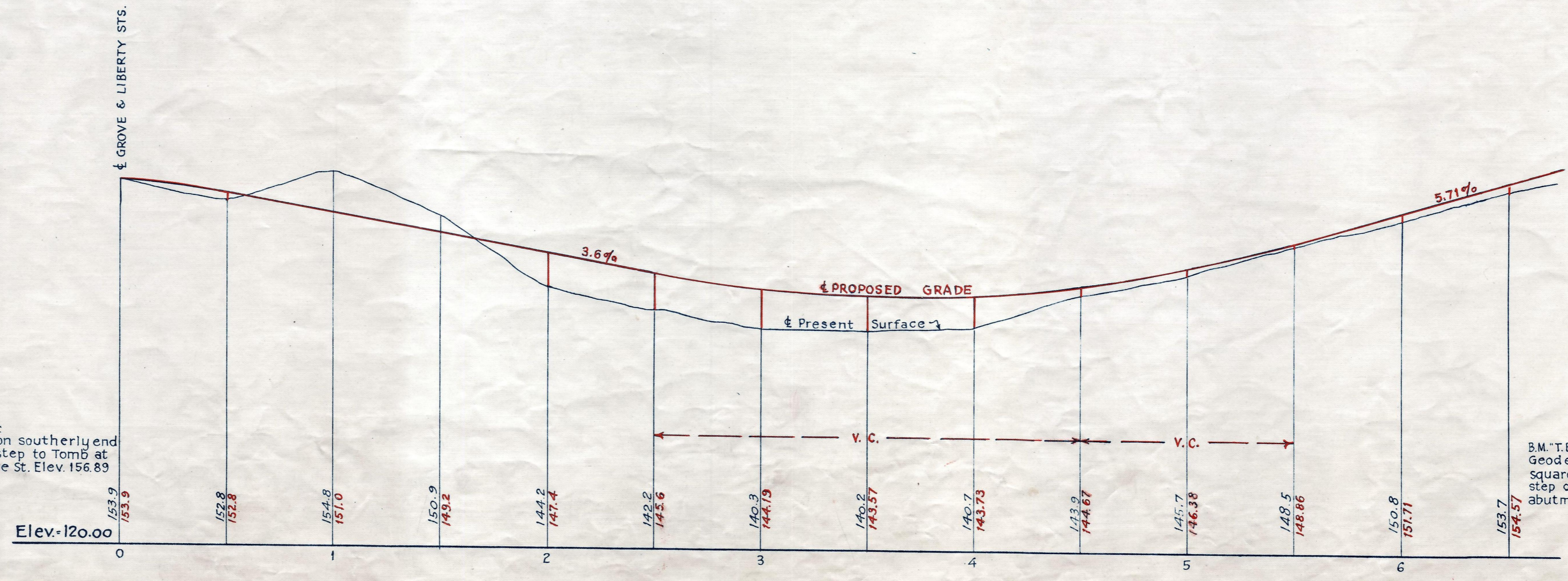
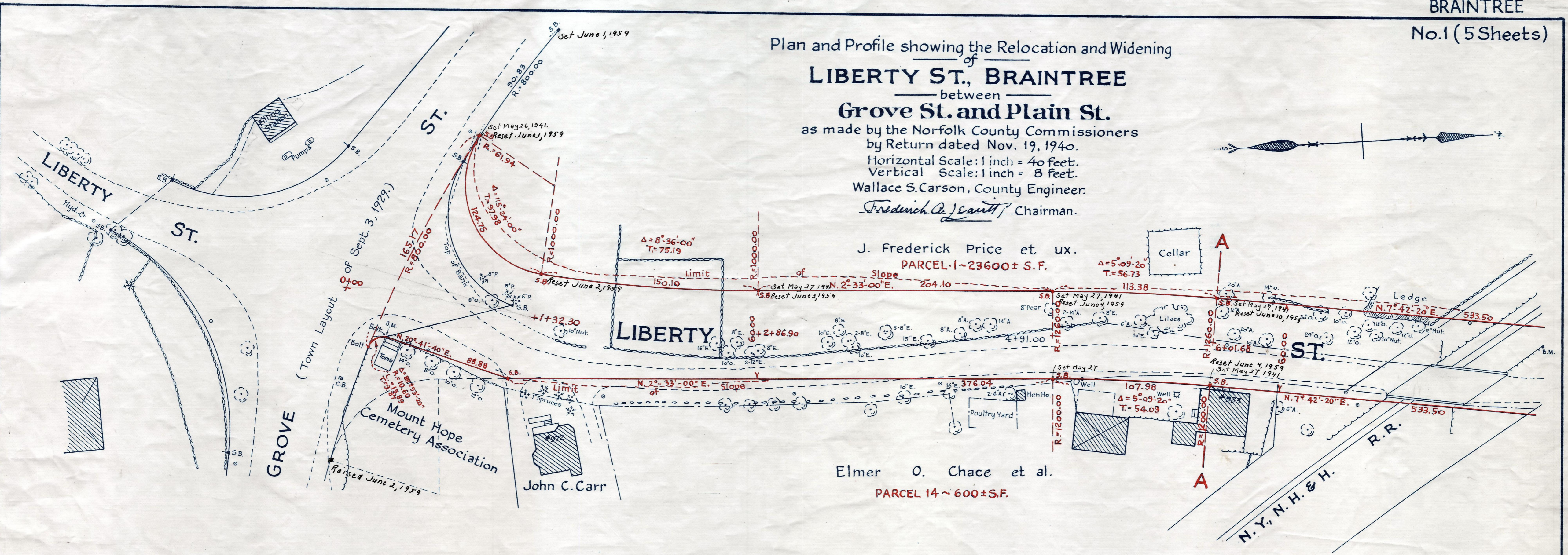


Plan and Profile showing the Relocation and Widening  
of  
**LIBERTY ST., BRAINTREE**  
between  
**Grove St. and Plain St.**  
as made by the Norfolk County Commissioners  
by Return dated Nov. 19, 1940.  
Horizontal Scale: 1 inch = 40 feet.  
Vertical Scale: 1 inch = 8 feet.  
Wallace S. Carson, County Engineer.  
*Frederick A. Gault*, Chairman.



Bench Mark:  
P.C. bolt on southerly end  
of bottom step to Tomb at  
cor. of Grove St. Elev. 156.89

B.M. "T.B.M. #244 P.W.D." (from Mass.  
Geodetic Survey) a chiselled  
square in N.W. cor. of the bottom  
step of the N.E. wing wall of R.R.  
abutment. Elev. 140.46

Date of Entry Dec. 16, 1940.