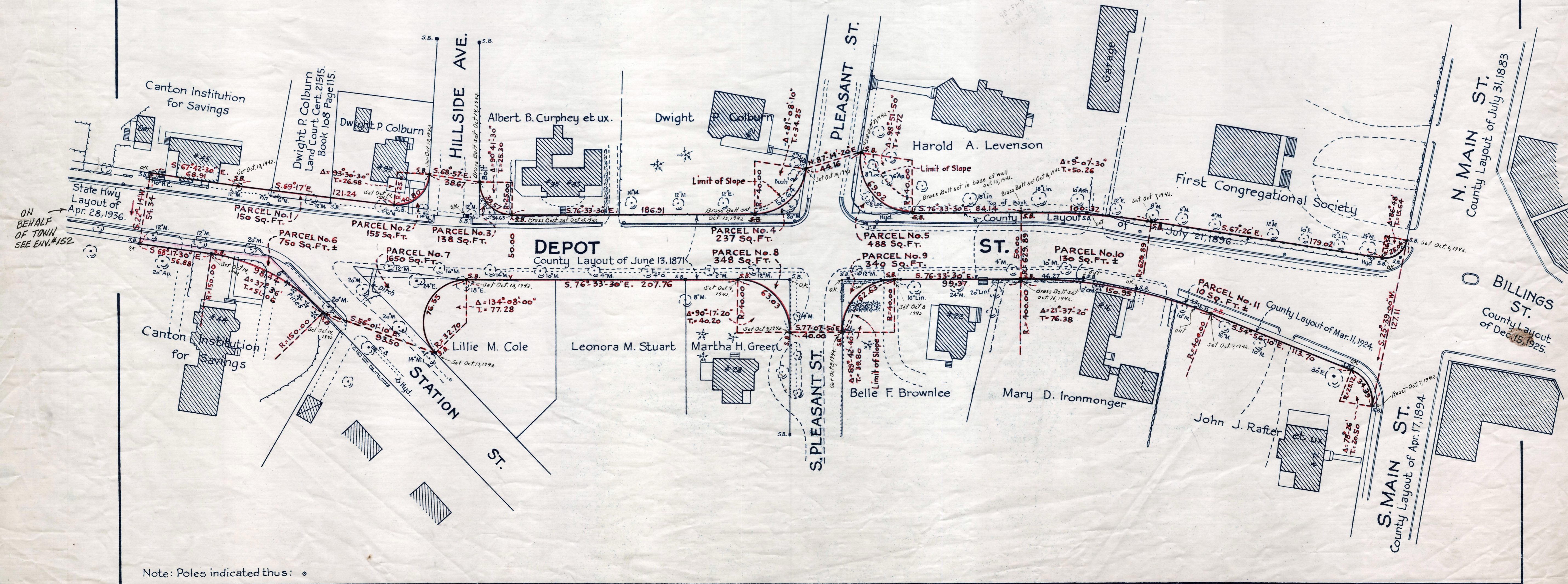
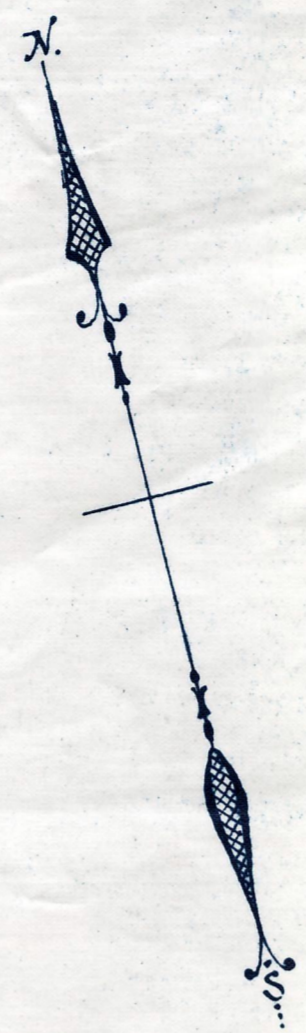


Plan showing the Re-establishing and Widening
of a portion of
DEPOT ST., SHARON
from west of Station St. to South Main St.
as made by the Norfolk County Commissioners
by Return dated June 18, 1940.
Scale 1 inch = 40 feet:
Wallace S. Carson, County Engineer.
Frederick R. Jewett, Chairman



Note: Poles indicated thus: ○