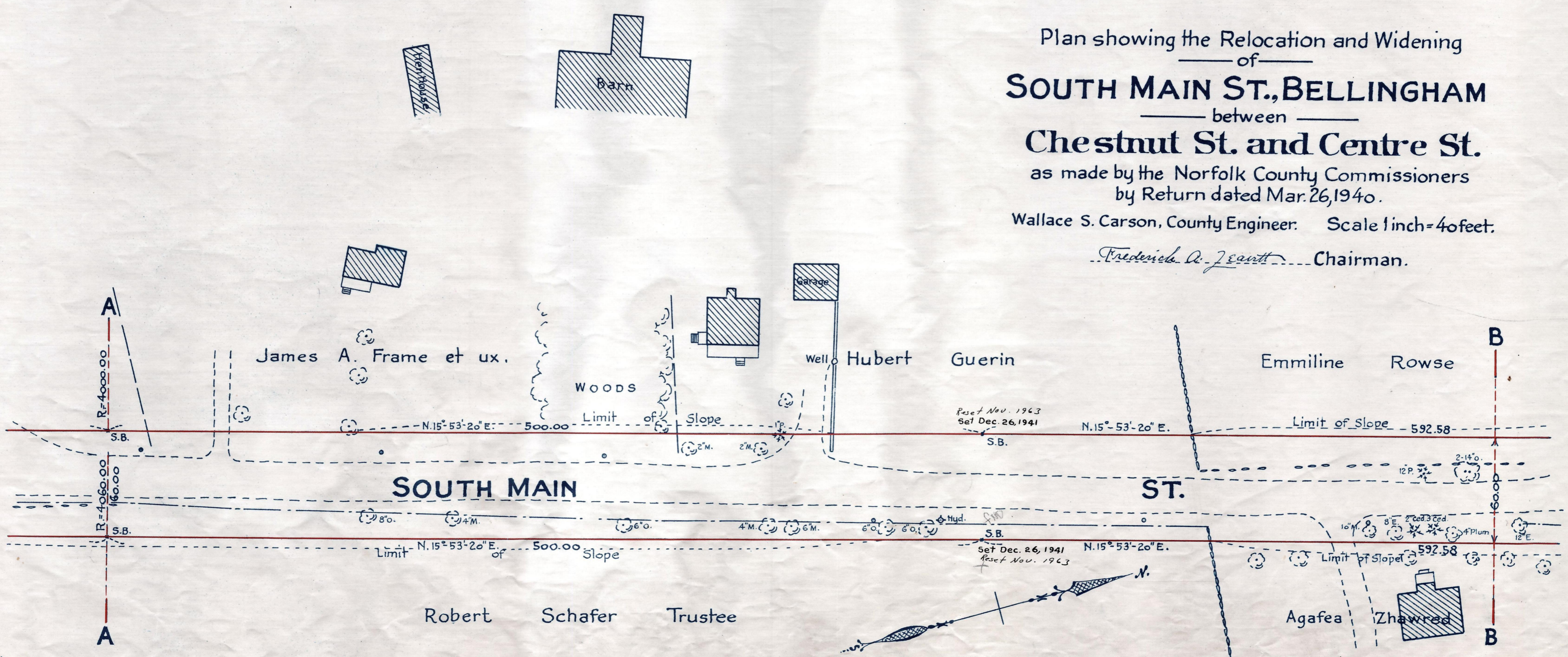


Robert Schafer Trustee

Plan showing the Relocation and Widening
 of
SOUTH MAIN ST., BELLINGHAM
 between
Chestnut St. and Centre St.
 as made by the Norfolk County Commissioners
 by Return dated Mar. 26, 1940.

Wallace S. Carson, County Engineer. Scale 1 inch = 40 feet.
Frederick A. Leavitt Chairman.



Robert Schafer Trustee

Note: Poles indicated thus: ○

Date of Entry April 8, 1940.