

Plan showing the Layout as a Private Way  
of

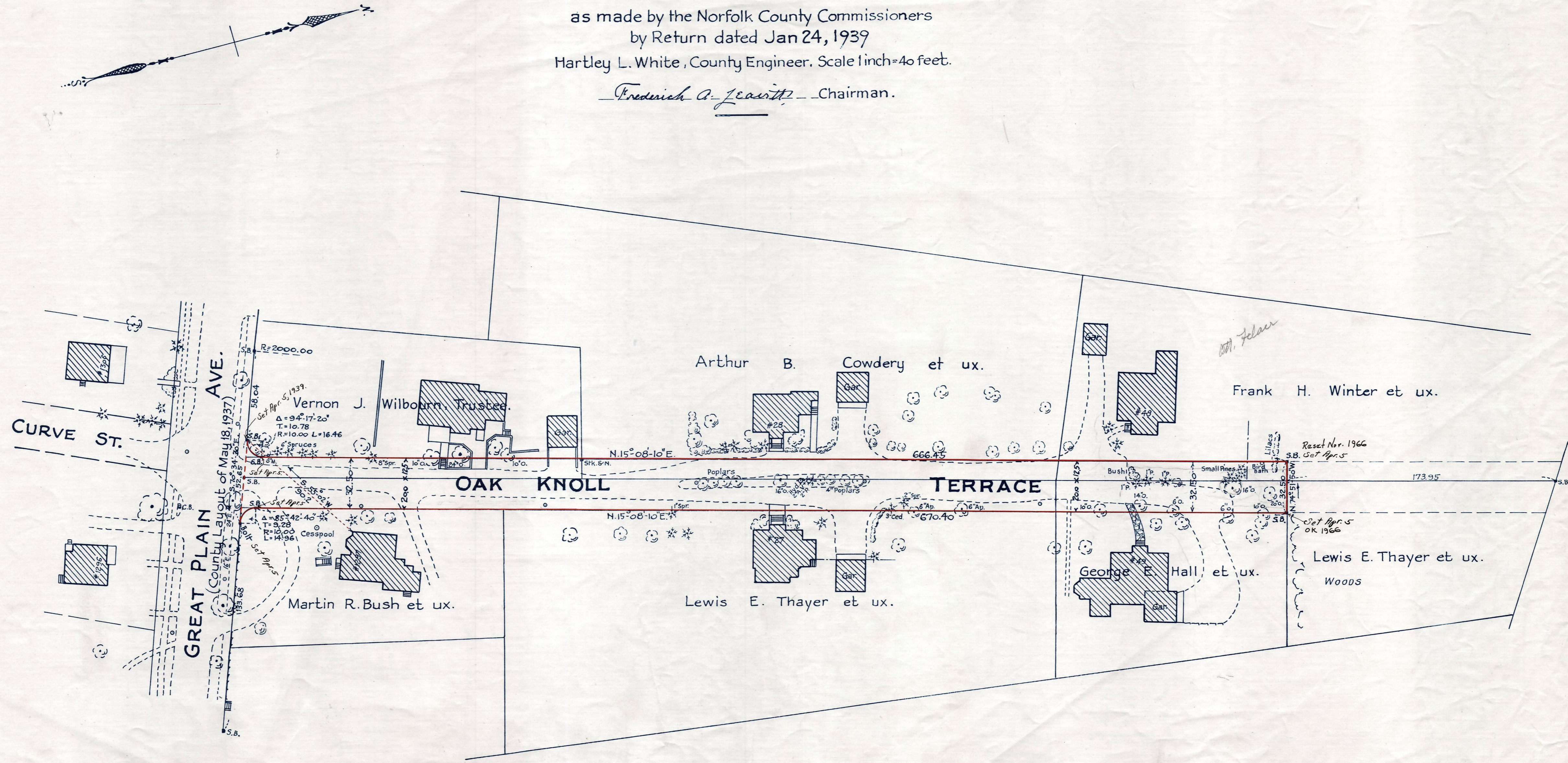
# OAK KNOLL TERRACE

in the  
**Town of Needham**

as made by the Norfolk County Commissioners  
by Return dated Jan 24, 1939

Hartley L. White, County Engineer. Scale 1 inch = 40 feet.

*Frederick A. Leavitt* - Chairman.



Note. Poles indicated thus: o