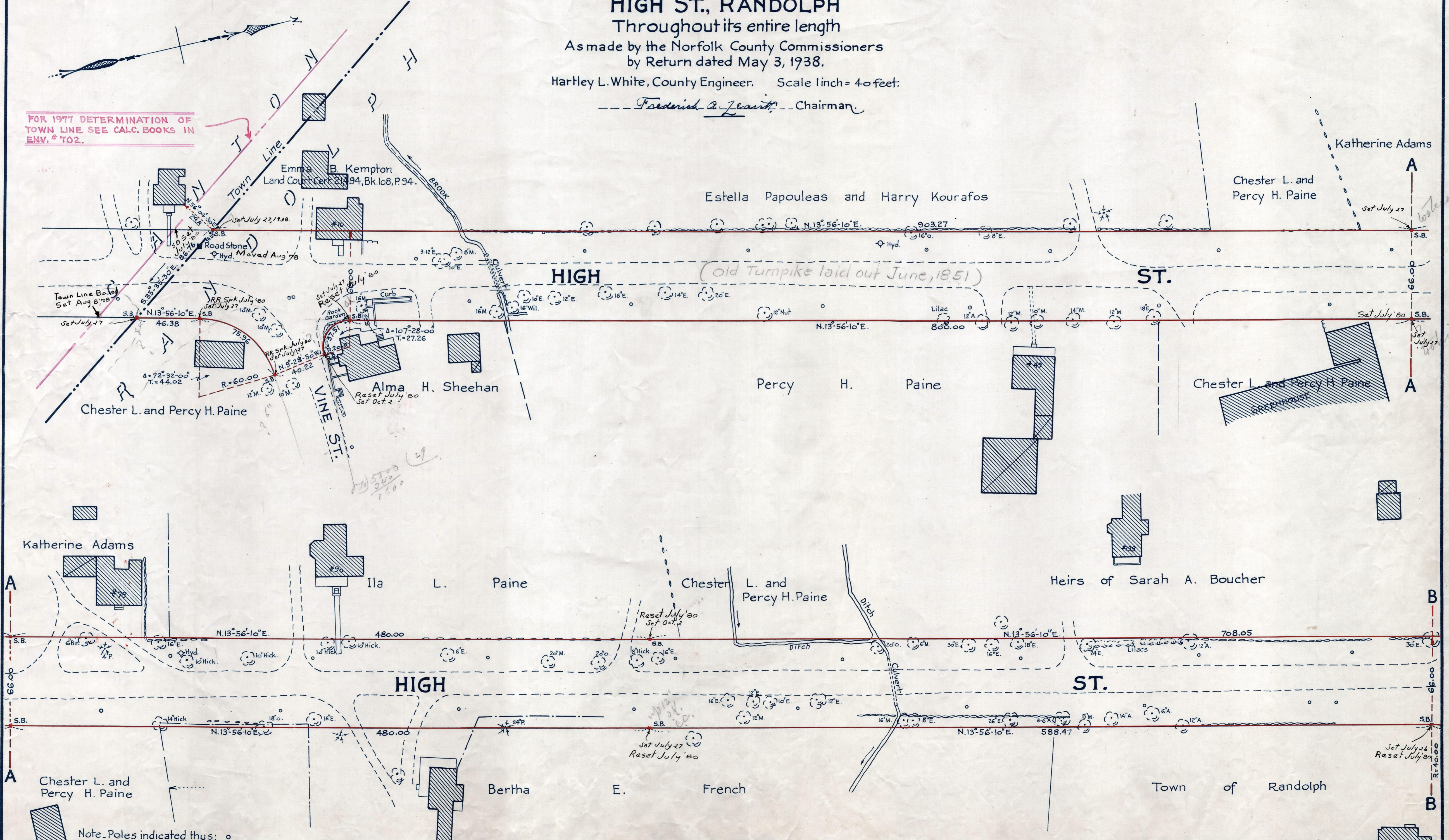


Plan showing the Relocation and Widening
 of
HIGH ST., RANDOLPH
 Throughout its entire length
 As made by the Norfolk County Commissioners
 by Return dated May 3, 1938.
 Hartley L. White, County Engineer. Scale 1 inch = 40 feet.
 --- Frederick A. Leavitt --- Chairman.

FOR 1977 DETERMINATION OF
 TOWN LINE SEE CALC. BOOKS IN
 ENV. # 702.



Note: Poles indicated thus: ○

Date of Entry May 6, 1938.

Entry 5/6/38

EASEMENT