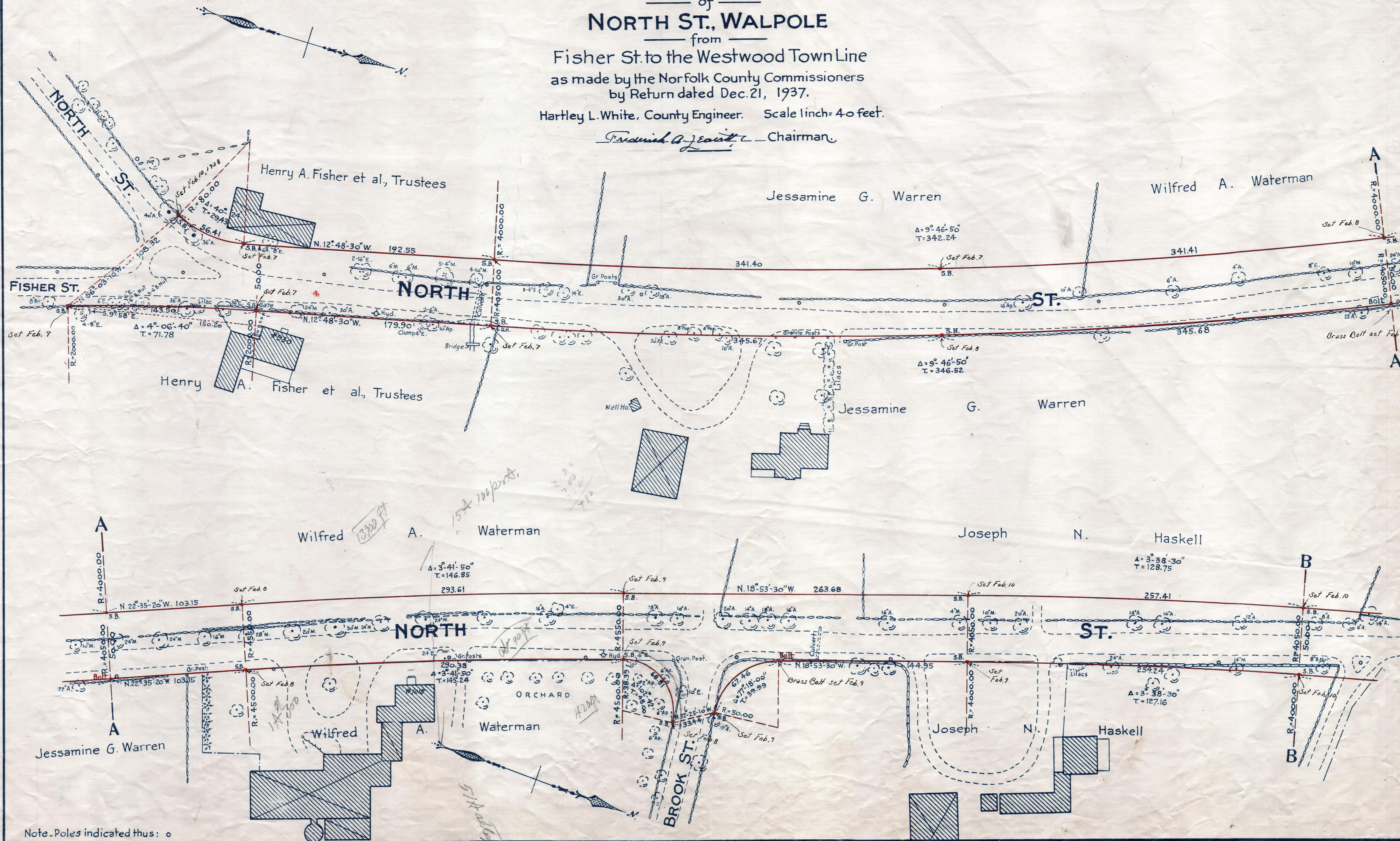


Plan showing the Relocation and Widening  
of  
**NORTH ST., WALPOLE**  
from  
Fisher St. to the Westwood Town Line  
as made by the Norfolk County Commissioners  
by Return dated Dec. 21, 1937.

Hartley L. White, County Engineer. Scale 1 inch = 40 feet.

*Frederick A. Leavitt* - Chairman



Note. Poles indicated thus: o

TAKING BK. 2168 PG. 569 ; PLBK 122 , PLS 828 TO 831 INCL. REC. DEC. 29, 1937

Date of Entry Mar. 18, 1938.