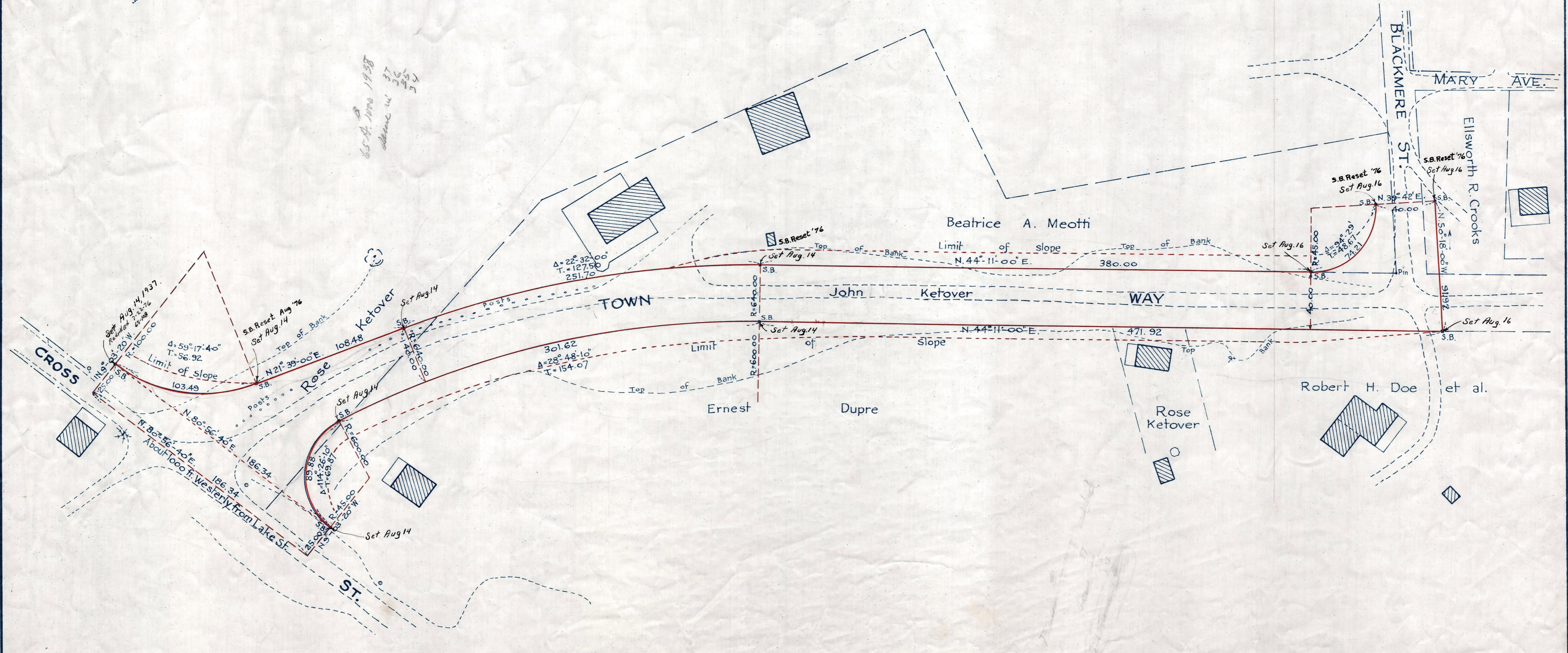
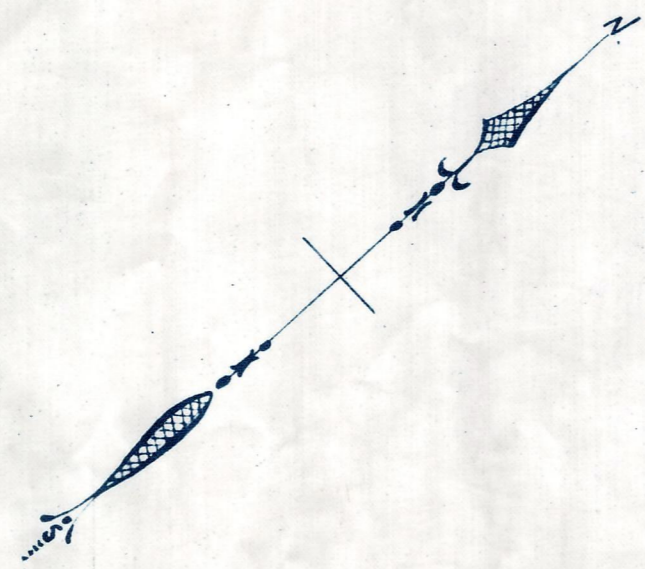


Plan showing the Layout
of a
TOWN WAY IN BELLINGHAM
from
CROSS ST. TO BLACKMERE ST.

as made by the Norfolk County Commissioners
by Return dated July 20, 1937.

Hartley L. White, County Engineer. Scale 1 inch = 40 feet.

Fredrick A. Jewett, Chairman.



*65-4, 1938, 1939
allowed in 37
36
35*

Note. Poles indicated thus: o

Date of Entry Oct 18, 1937.

*Entry Oct 18 1937
6 May 3, 1938*