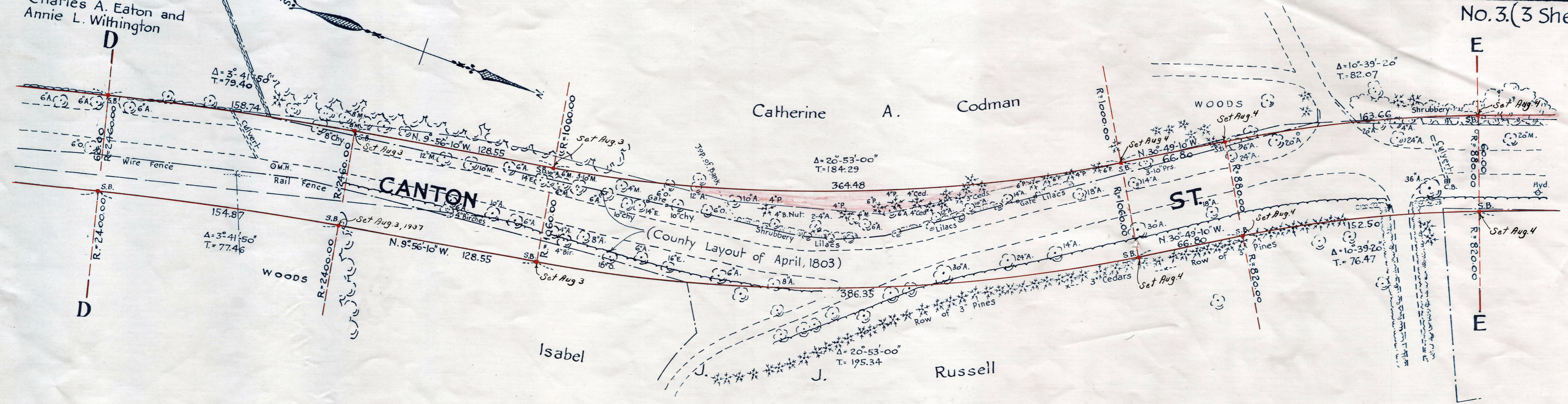


Charles A. Eaton and Annie L. Withington

Catherine A. Codman

WOODS



D
D

E
E

CANTON

ST.

Isabel

Russell

Catherine A.

Codman

Charles A. Eaton and Annie L. Withington

Catherine

Codman

E

CANTON

ST.

E

Isabel J. J. Russell

Charles A. Eaton and Annie L. Withington

EVERETT

Laid out by County Commrs June, 1881.

Wahung 3260
(7400 sheet 1)
34 A. 950
25 per A.

Note. Poles indicated thus: ◦