

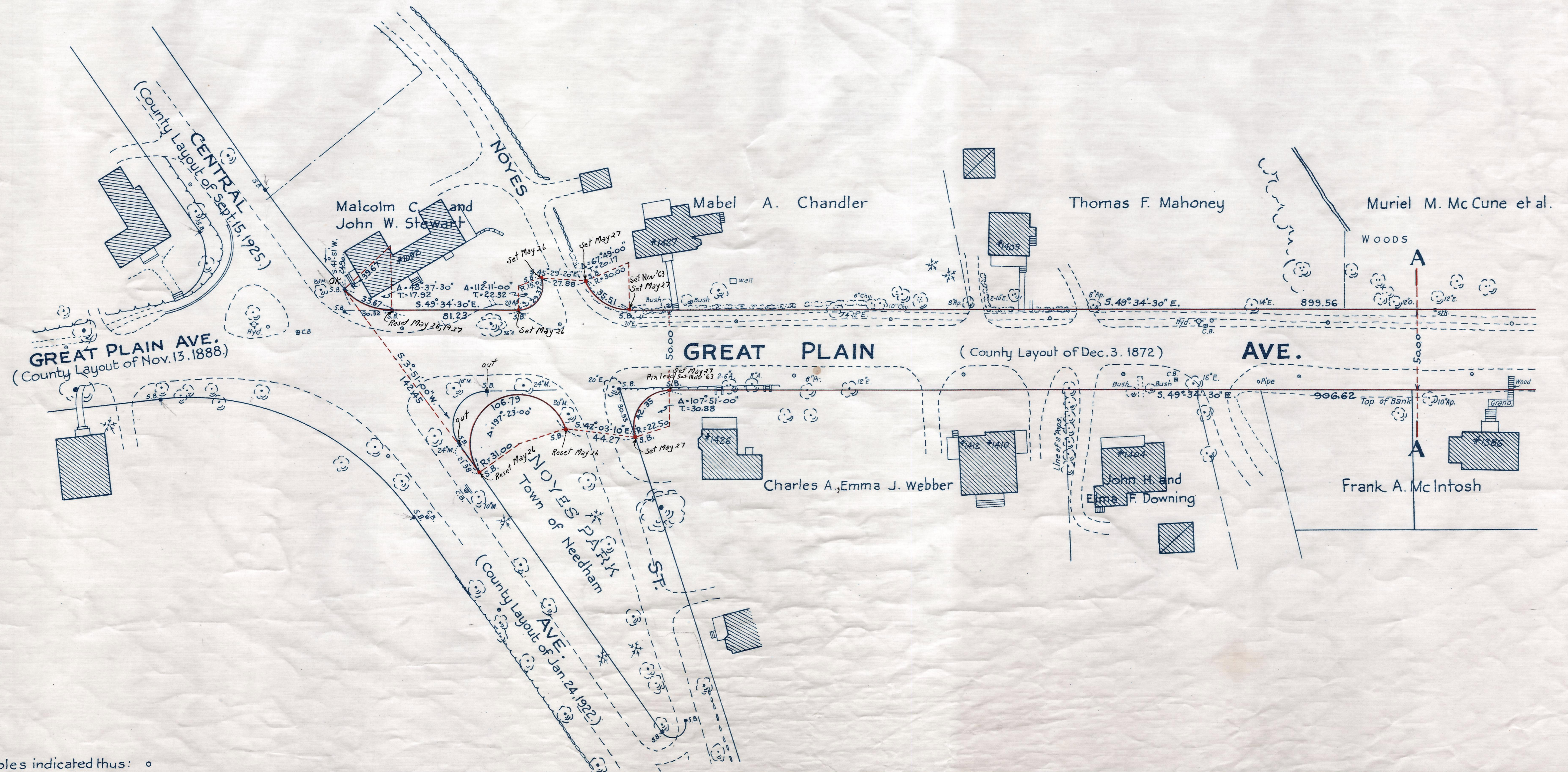
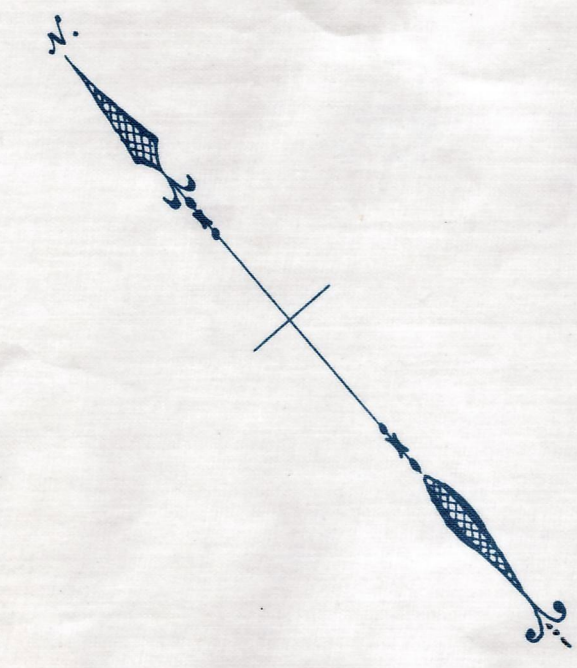
Plan showing the Relocation and Widening of GREAT PLAIN AVE., NEEDHAM

between
Central Ave. and Prospect St.
as made by the Norfolk County Commissioners
by Return dated May 18, 1937

Hartley L. White, County Engineer. Scale 1 inch = 40 feet.
Edmund W. Hunt Acting Chairman

A TRUE COPY.

Attest: _____ Clerk



Note: Poles indicated thus: ○

6/4/37