

Walter L. Van Kleeck et al., Trustees

Ruth Chase

Ellen Forbes

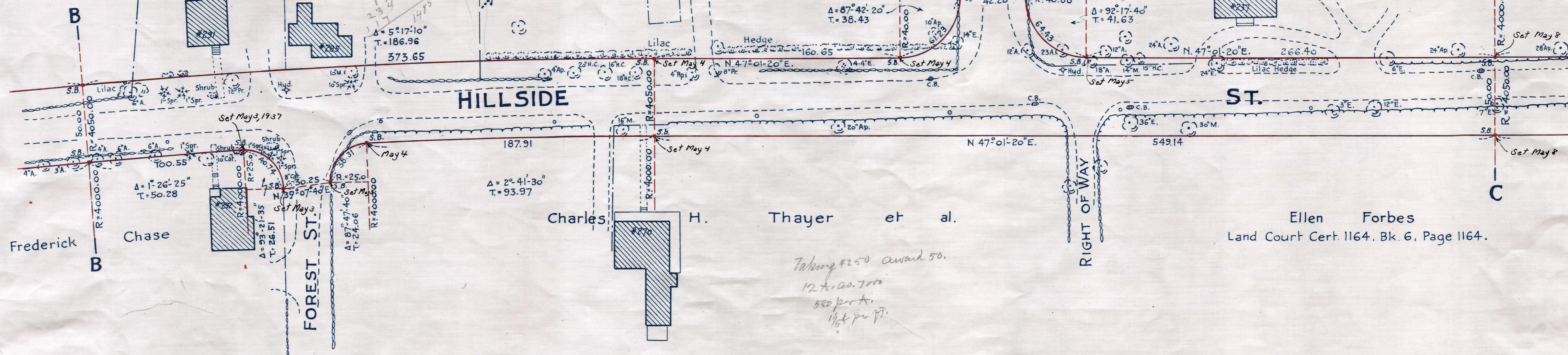
Ruth B. Thurber

Ellen Forbes  
Land Court Cert. 1164, Bk. 6, Page 1164.

HILLSIDE ST.

ST.

HARLAND ST.  
County Layout of Dec. 1846



Frederick Chase

Charles H. Thayer et al.

Ellen Forbes  
Land Court Cert. 1164, Bk. 6, Page 1164.

FOREST ST.

RIGHT OF WAY

*Taking 2250 around 50.  
12 ft. 100.700  
500 per ft.  
1/4 ft per ft.*

Edith M. Safford, Trustee

Nina P. Linington and Jean Saunders

Ellen Forbes  
Land Court Cert. 1164, Bk. 6, Page 1164.

HILLSIDE ST.

ST.

Ellen Forbes  
Land Court Cert. 1164, Bk. 6, Page 1164.

Florence C. Wislocki

Ellen Forbes

*22A. Parcel 12  
John De report.*

*3.5 x 1800  
510 per ft.*

Note: Poles indicated thus: o