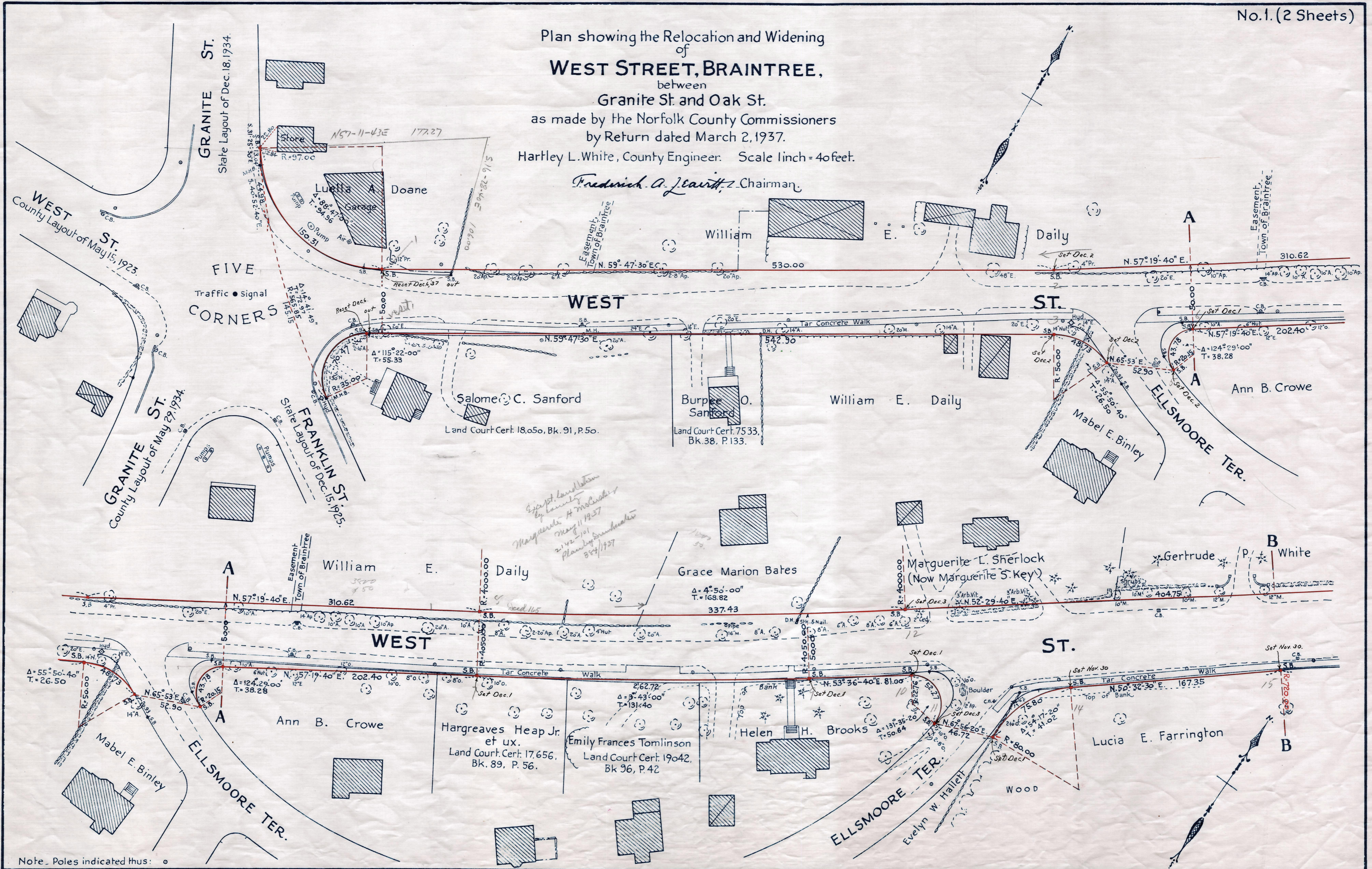


Plan showing the Relocation and Widening of  
**WEST STREET, BRAINTREE,**  
between  
Granite St. and Oak St.

as made by the Norfolk County Commissioners  
by Return dated March 2, 1937.  
Hartley L. White, County Engineer. Scale 1 inch = 40 feet.

*Frederick A. Leavitt*, Chairman



Note. Poles indicated thus: ○

TAKING - 2136/475  
P.B. 121-123-4 of 37  
Rec. MARCH 8, 1937

Date of Entry Sept. 1, 1938.