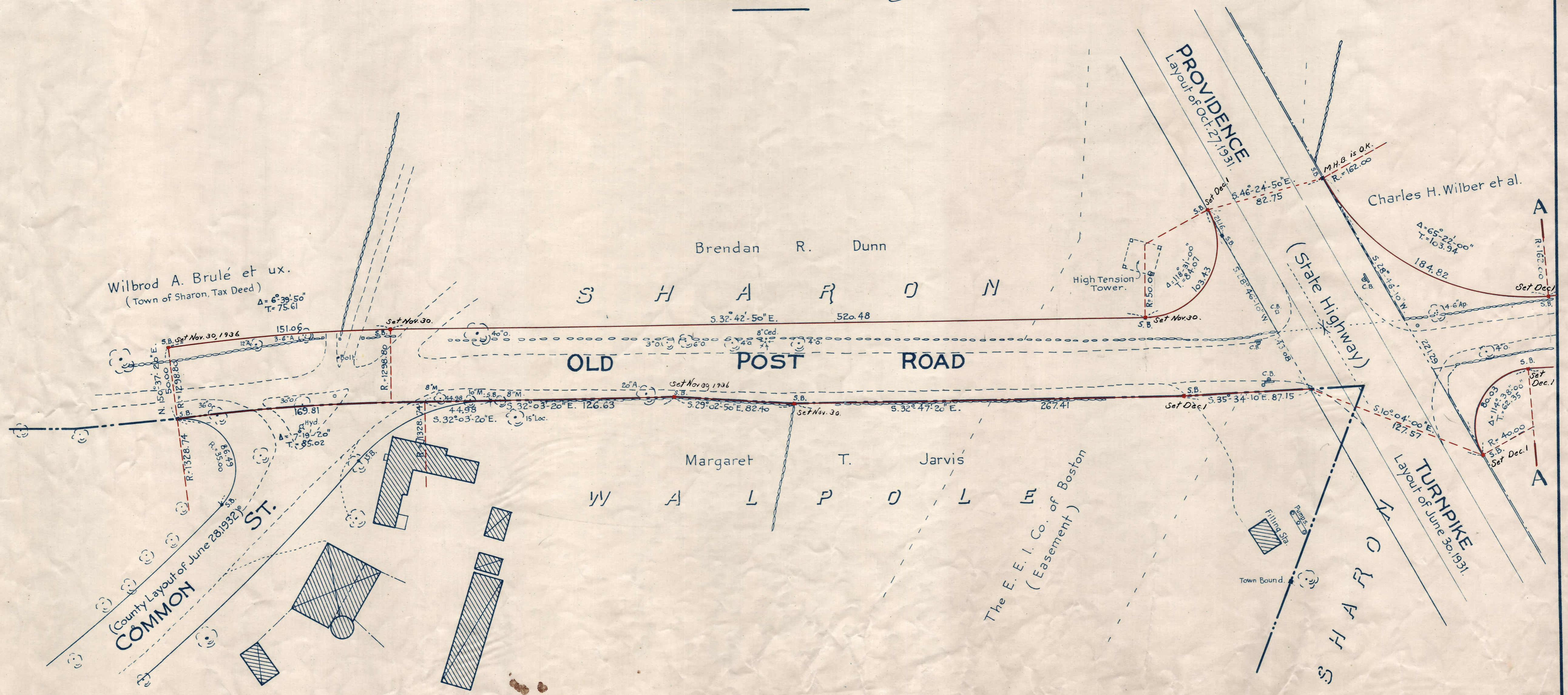
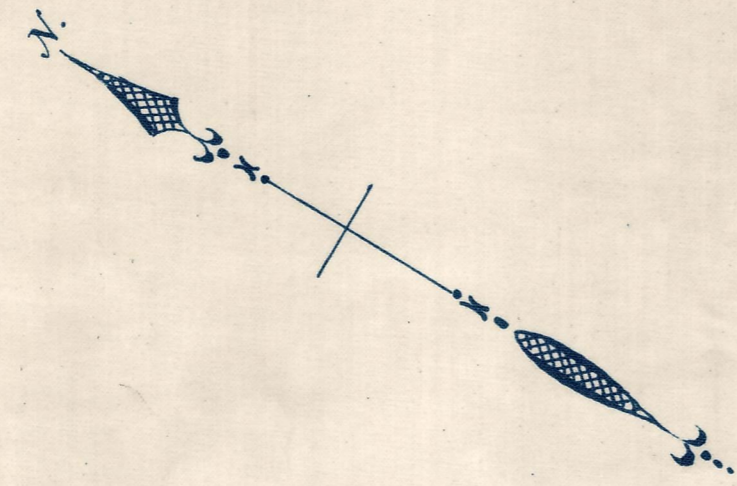


Plan showing the Relocation and Widening
 of
OLD POST ROAD, SHARON
 from
 Common St., Walpole to Walpole St., Sharon
 as made by the Norfolk County Commissioners
 by Return dated Oct. 27, 1936.
 Hartley L. White, County Engineer. Scale 1 inch = 40 feet.

Edward W. Hunt Chairman



Note. Poles indicated thus: \circ

Date of Entry Jan. 29, 1937.
 TAKING - 2126-553 ReC - Nov. 10, 1936
 P.B. 120 - 535-536