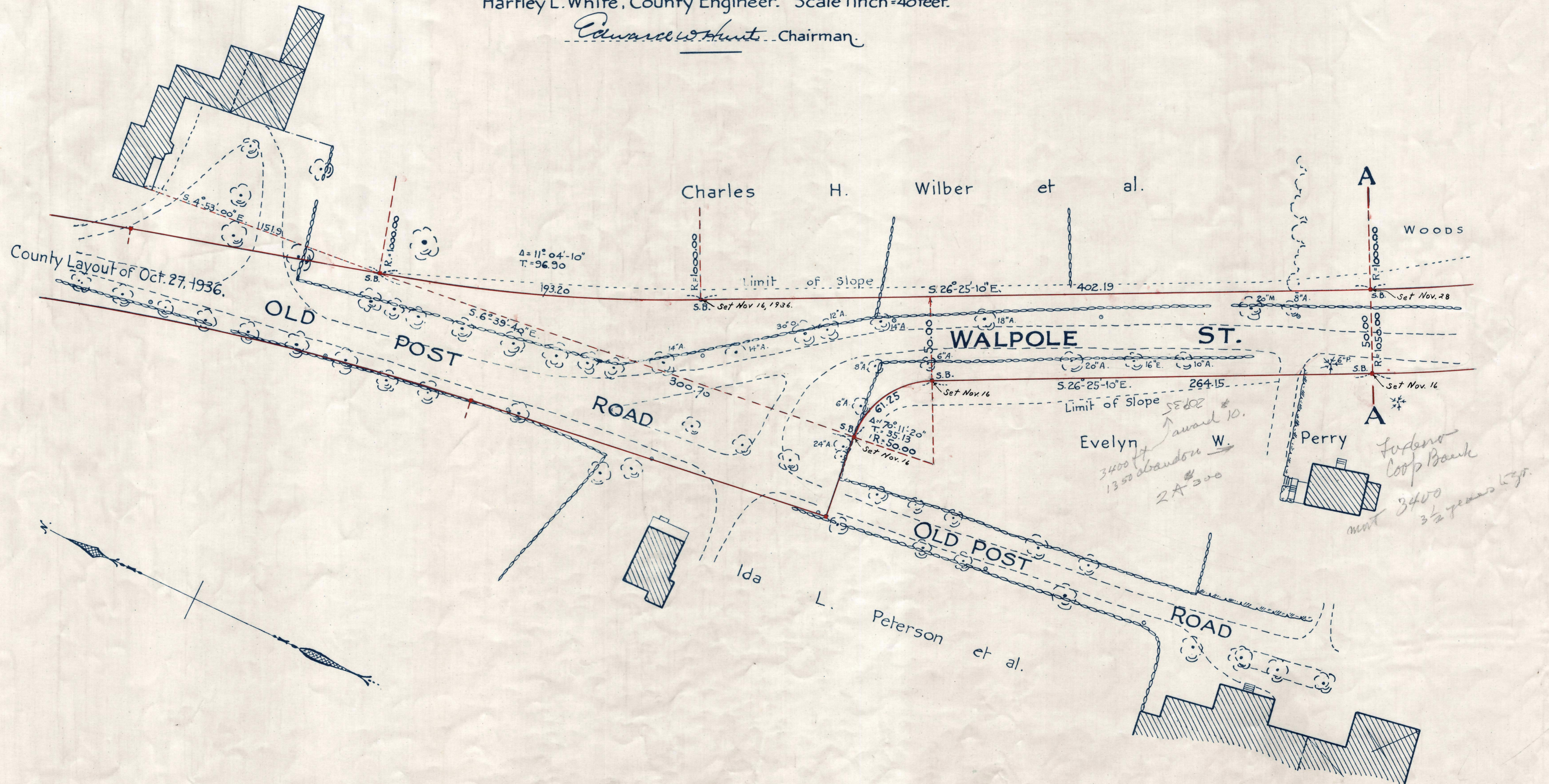


Plan showing the Relocation and Widening
of
WALPOLE ST., SHARON
from
Old Post Road to South Main St.
as made by the Norfolk County Commissioners
by Return dated Oct. 27, 1936.

Hartley L. White, County Engineer. Scale 1 inch = 40 feet.

Edward W. Hunt Chairman



Note - Poles indicated thus: \circ

Date of Entry Jan 29, 1937
TAKING - 2126-548 Rec. Nov. 10, 1936
P. B. 120 #530-534