

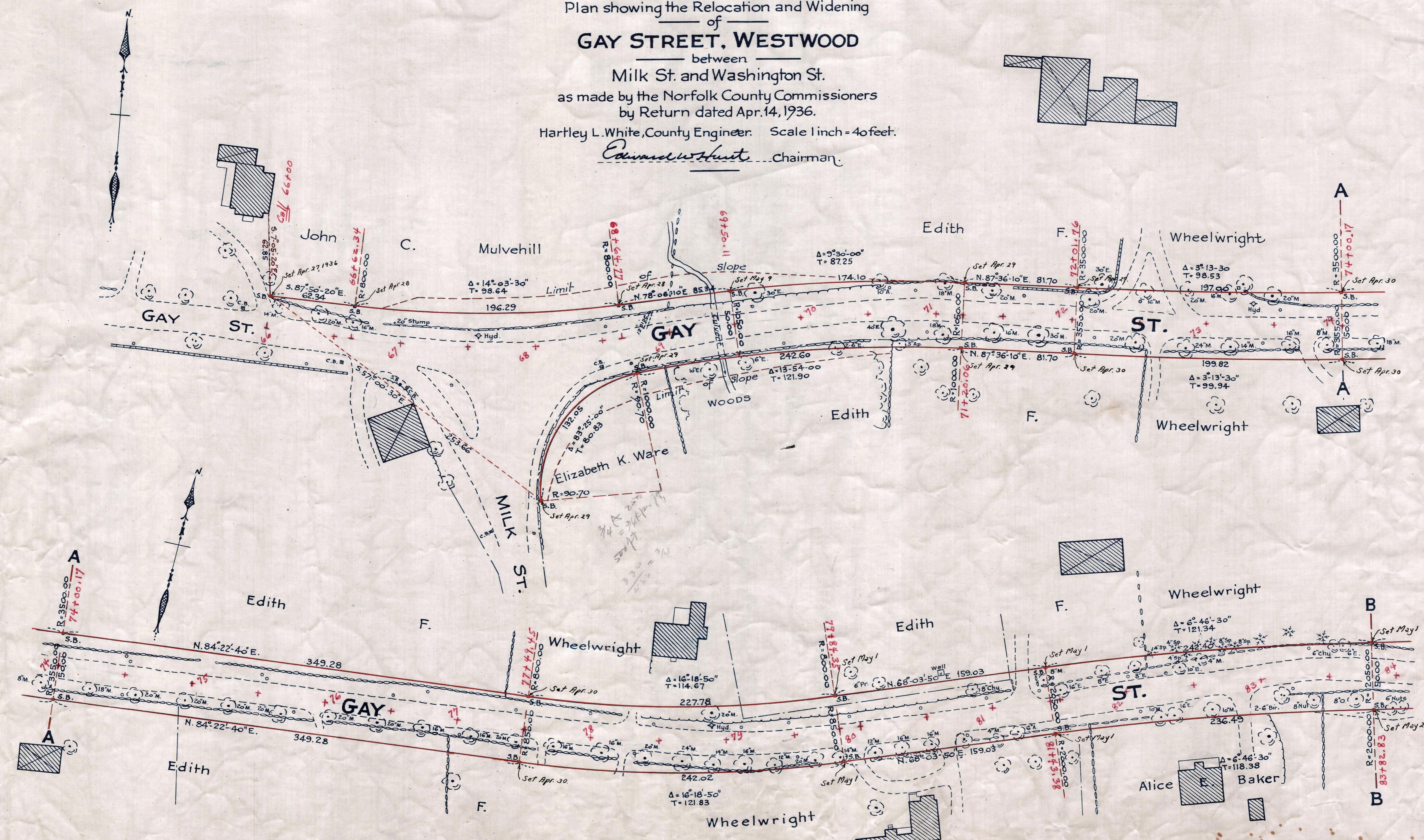
Plan showing the Relocation and Widening of GAY STREET, WESTWOOD

between Milk St. and Washington St.

as made by the Norfolk County Commissioners by Return dated Apr. 14, 1936.

Hartley L. White, County Engineer. Scale 1 inch = 40 feet.

Edward W. Hunt Chairman



Note: Poles indicated thus: ○

Date of Entry Aug. 19, 1936.

TAKING - 2106-46

Rec. Apr. 22, 1936

P.B. - 120-168-170