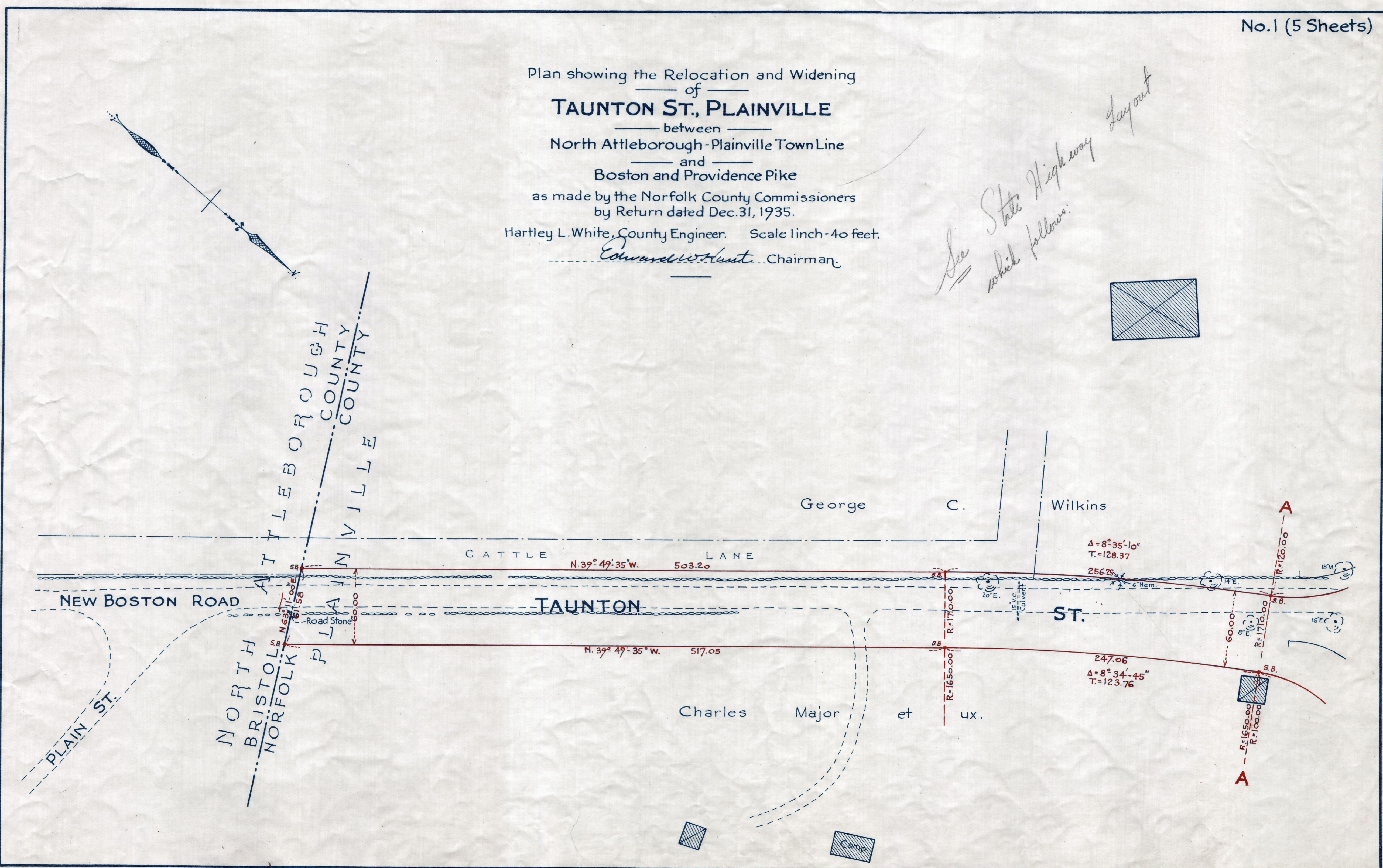
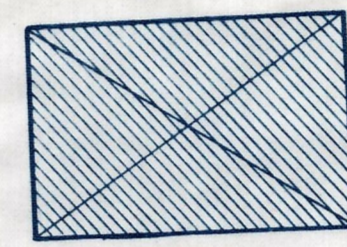


Plan showing the Relocation and Widening  
 of  
**TAUNTON ST., PLAINVILLE**  
 between  
 North Attleborough-Plainville Town Line  
 and  
 Boston and Providence Pike  
 as made by the Norfolk County Commissioners  
 by Return dated Dec. 31, 1935.  
 Hartley L. White, County Engineer. Scale 1 inch = 40 feet.  
*Edward W. Hunt*, Chairman

*See State Highway layout  
 which follows:*



*No Entry  
 this was taken back out by state  
 what should be  
 done with it.*

Date of Entry No Entry  
 TAKING - 2097-95  
 P.B. - ~~119~~ - 139-143  
 P.B. 119 #7-11  
 Rec: JAN 10, 1936  
 227