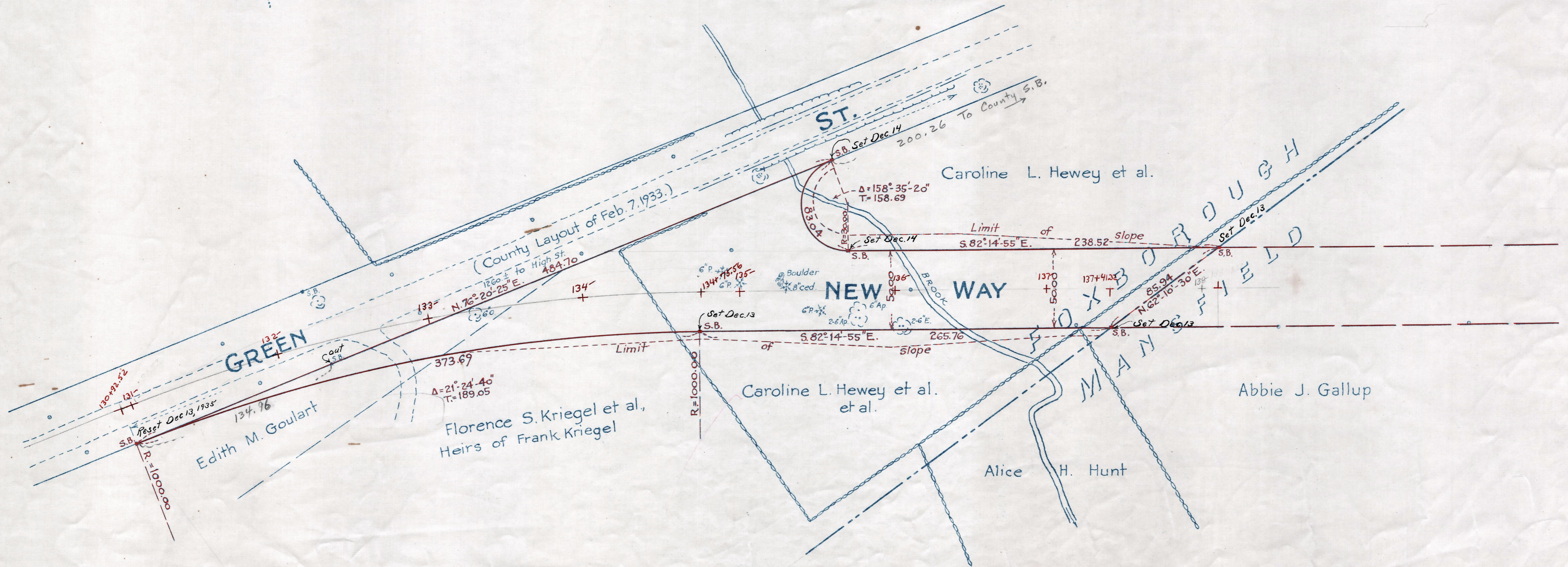


Plan showing the Layout  
of a  
**NEW WAY IN FOXBOROUGH**

between  
Green St. and the Foxborough-Mansfield Town Line  
as made by the Norfolk County Commissioners  
by Return dated Sept. 24, 1935.

Hartley L. White, County Engineer. Scale 1 inch = 40 feet.

*Edward W. Hunt* Chairman.



Note. Poles shown thus: °

9/27/35

Date of Entry Sept. 27, 1935.

TAKING - 2081-572 Rec. Sept 26, 1935  
P.B. - 119-348