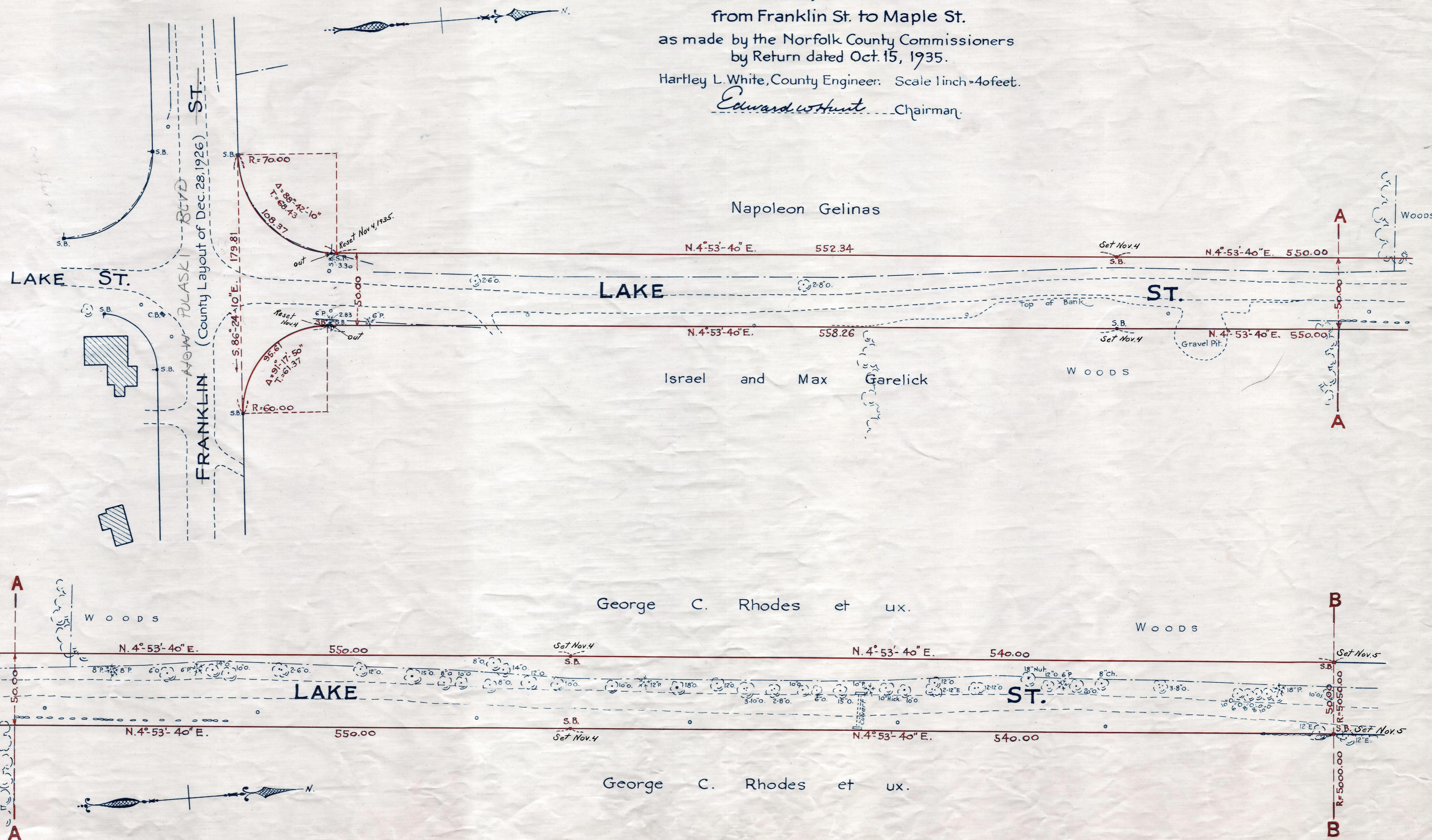


Plan showing the Relocation and Widening
 of _____
LAKE ST., BELLINGHAM
 from Franklin St. to Maple St.
 as made by the Norfolk County Commissioners
 by Return dated Oct. 15, 1935.
 Hartley L. White, County Engineer. Scale 1 inch = 40 feet.
Edward W. Hunt Chairman.



Note: Poles indicated thus: ○

Date of Entry Nov. 1, 1935. 224
 TAKING - 2089-41 Rec: Oct 26, 1935
 P.B. - 119-~~326~~396