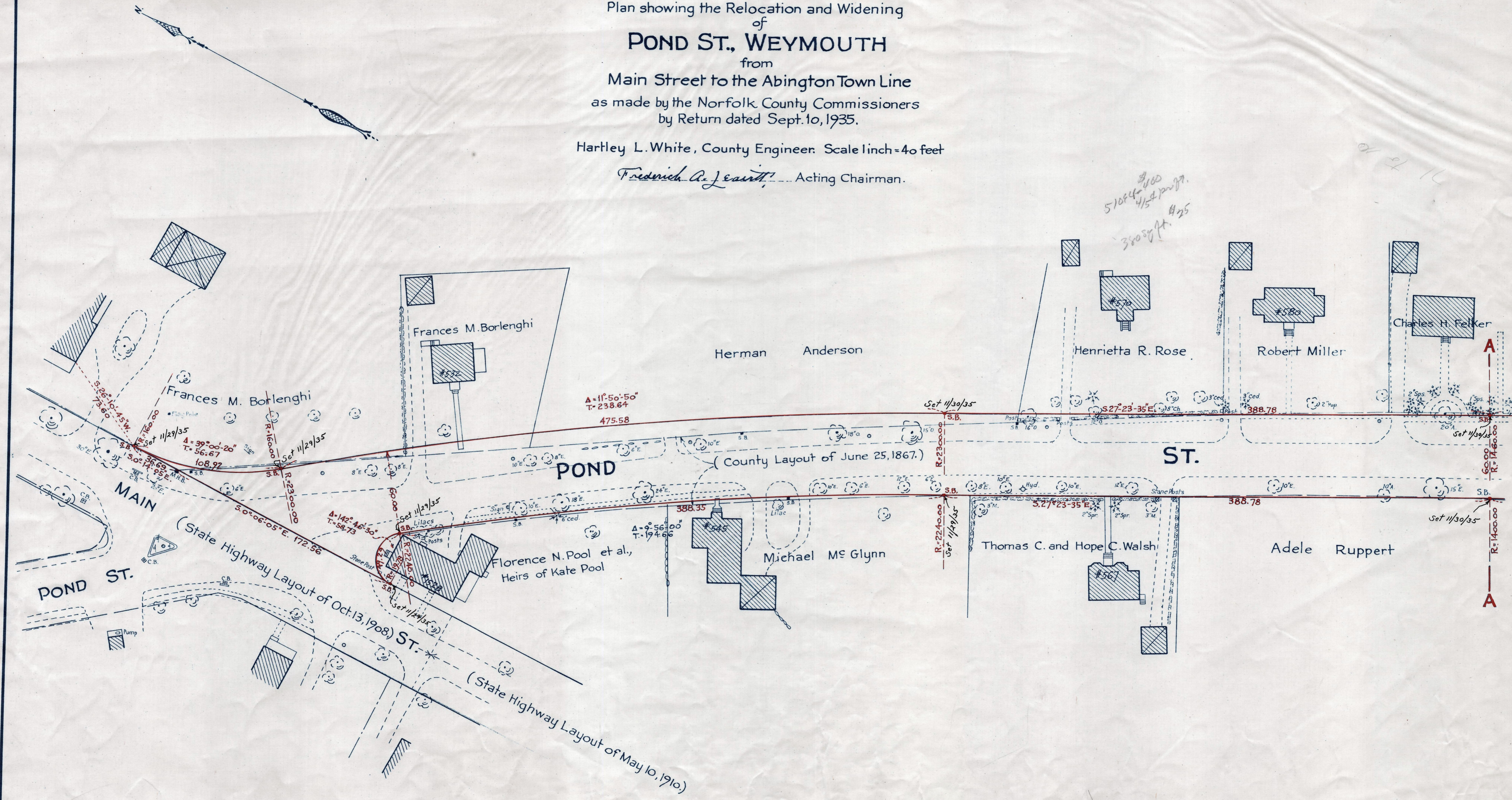


Plan showing the Relocation and Widening of
POND ST., WEYMOUTH
from
Main Street to the Abington Town Line
as made by the Norfolk County Commissioners
by Return dated Sept. 10, 1935.

Hartley L. White, County Engineer. Scale 1 inch = 40 feet
Frederick A. Jesuit, Acting Chairman.



Note - Poles indicated thus: ○

12/16/35

Date of Entry Dec. 16, 1935.
TAKING - 2080-541
R.B. - 119-335-336
Rec: Sept 18, 1935