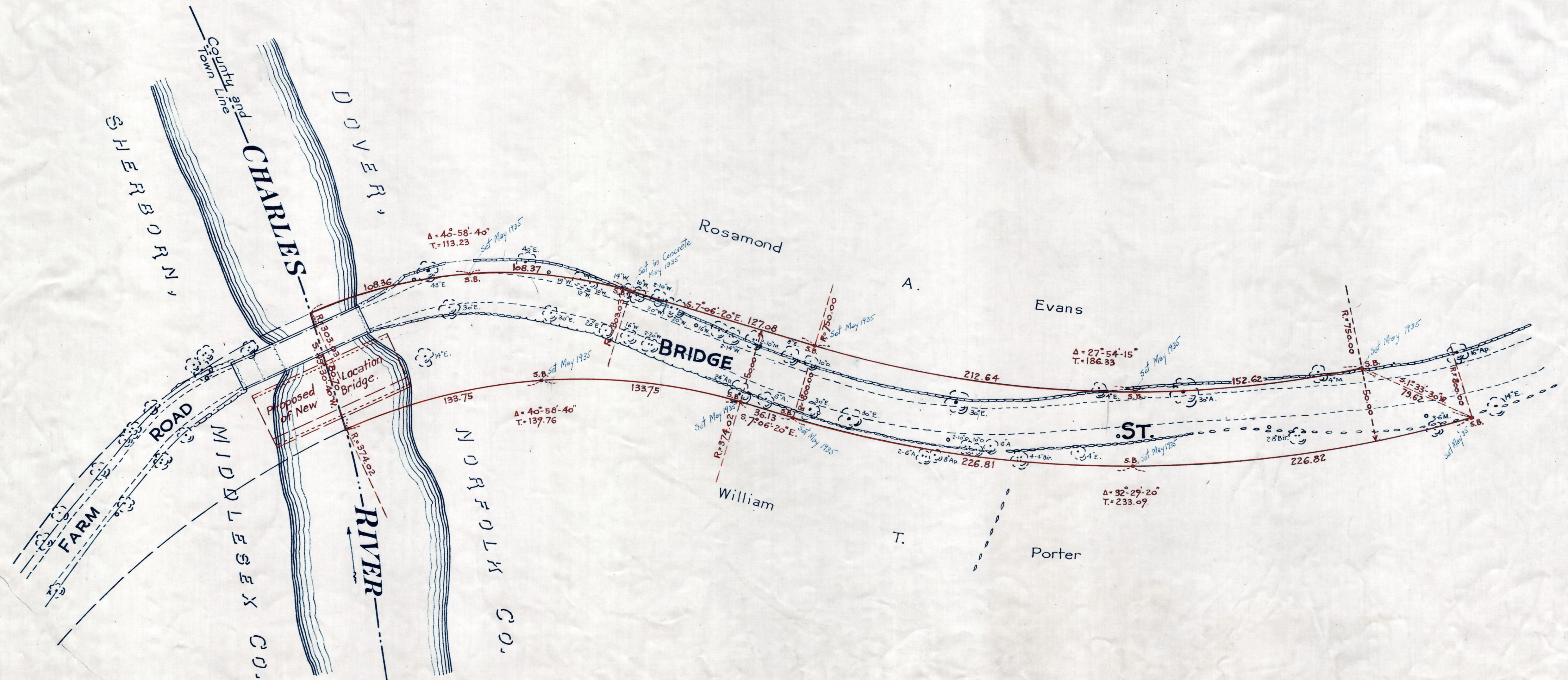


Plan showing the Relocation and Widening
of a portion of
BRIDGE ST., DOVER
between the
Charles River and Farm St.
as made by the Norfolk County Commissioners
by Return dated Nov. 20, 1934.

Hartley L. White, County Engineer. Scale 1 inch = 40 feet.

Edward W. Hunt, Chairman



Note: - Poles indicated thus: \circ

Date of Entry Dec. 3, 1934.

TAKING - 2053-36

R.B. - 118-500

Rec: Nov. 28, 1934