

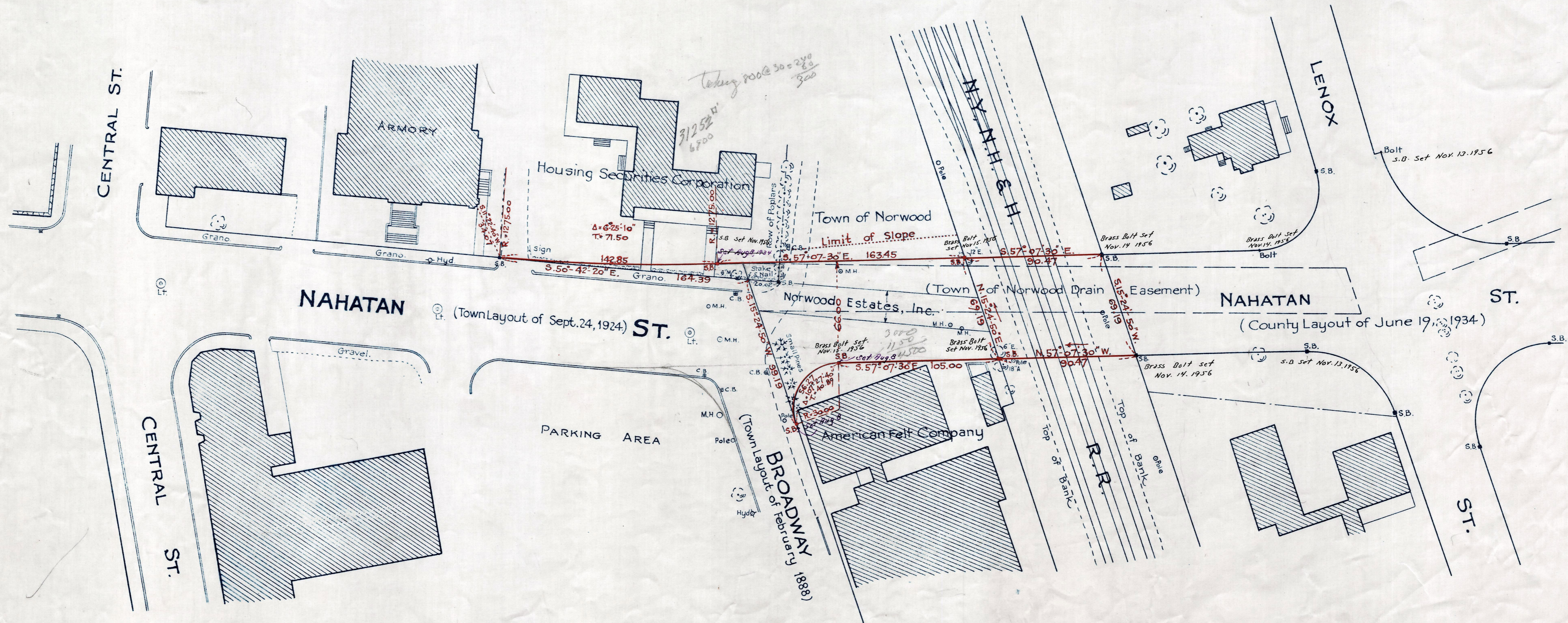
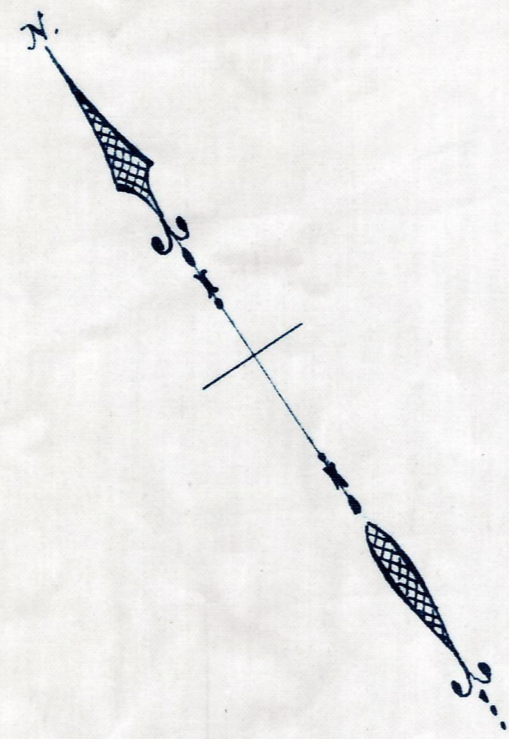
Plan showing the Location
of
NAHATAN ST., NORWOOD
between

Central St. and the Easterly Line of Location of the N.Y., N.H. & H. RR.

as made by the Norfolk County Commissioners
by Return dated July 17, 1934.

Hartley L. White, County Engineer. Scale 1 inch = 40 feet.

Edward W. Hunt Chairman.



Date of Entry Sept. 12, 1934.
TAKING - 2035-16
P.B. - 118-353
Rec. July 24, 1934