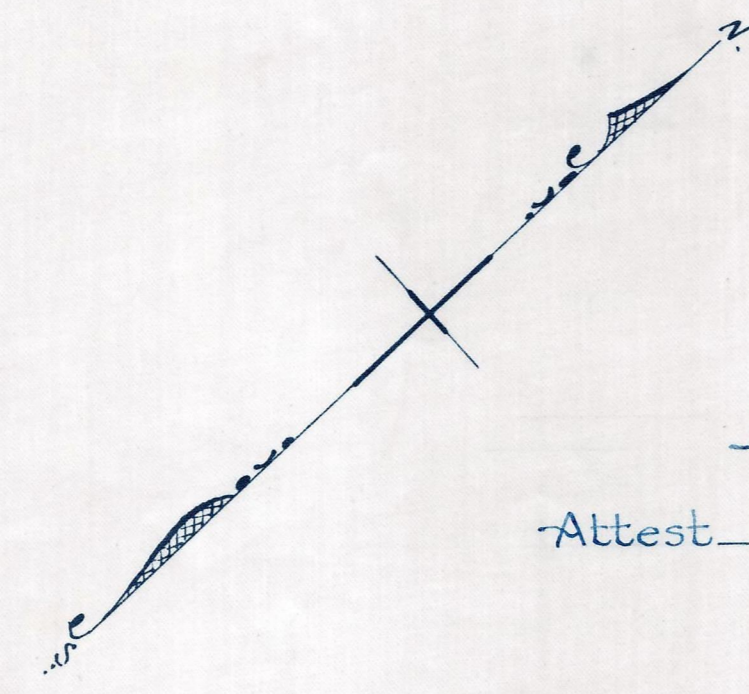


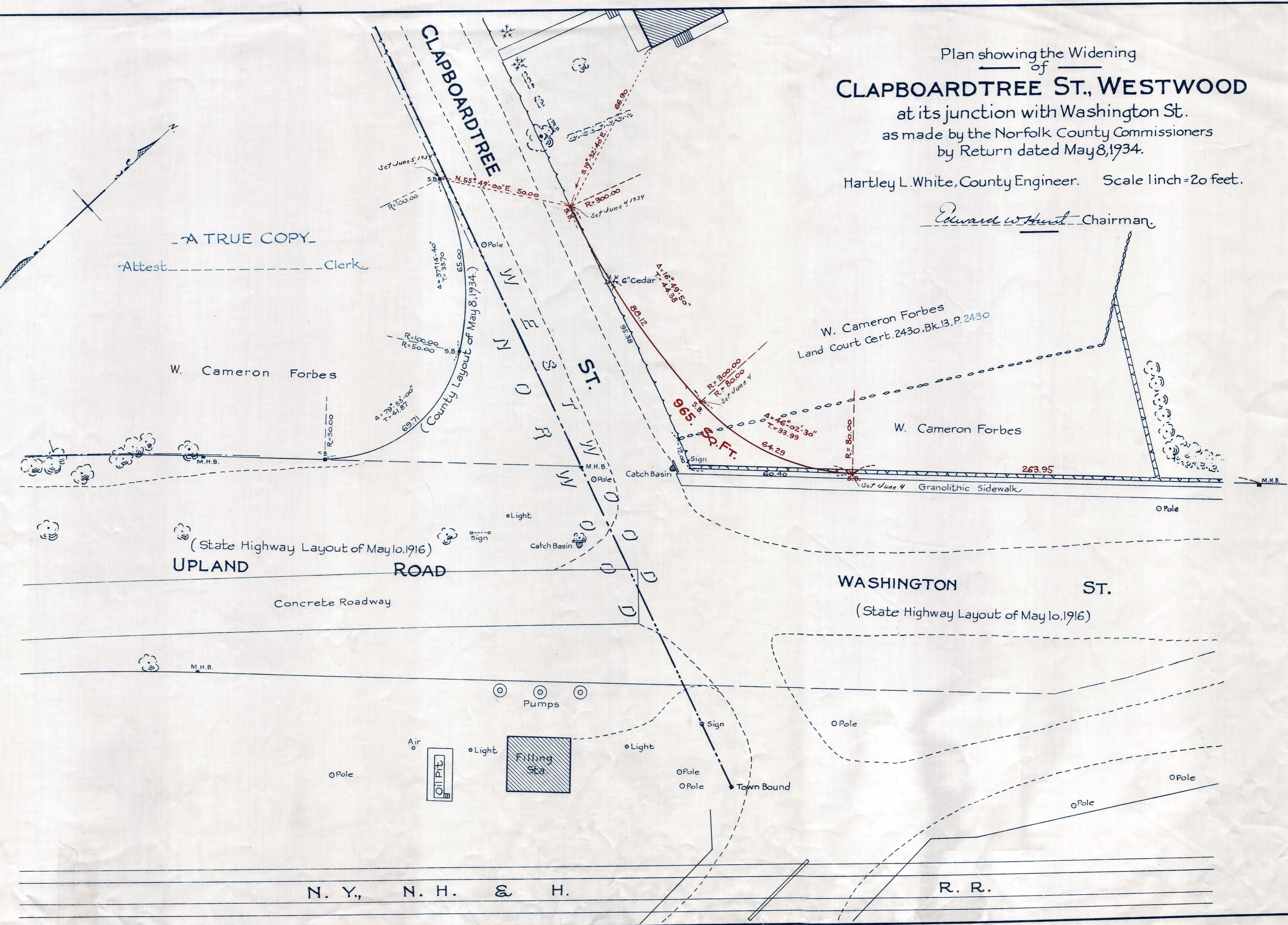
Plan showing the Widening  
of  
**CLAPBOARDTREE ST., WESTWOOD**  
at its junction with Washington St.  
as made by the Norfolk County Commissioners  
by Return dated May 8, 1934.

Hartley L. White, County Engineer. Scale 1 inch = 20 feet.

*Edward W. Hunt* Chairman



-A TRUE COPY-  
Attest \_\_\_\_\_ Clerk



Date of Entry Aug. 2, 1934

P.B. 117-204  
TAKING 2026-470  
Rec. 5-14-34