

Plan showing the Widening  
of  
**UPLAND ROAD, NORWOOD**  
at its junction with Clapboardtree St.  
as made by the Norfolk County Commissioners  
by Return dated May 8, 1934.

Hartley L. White, County Engineer. Scale 1 inch = 20 feet.

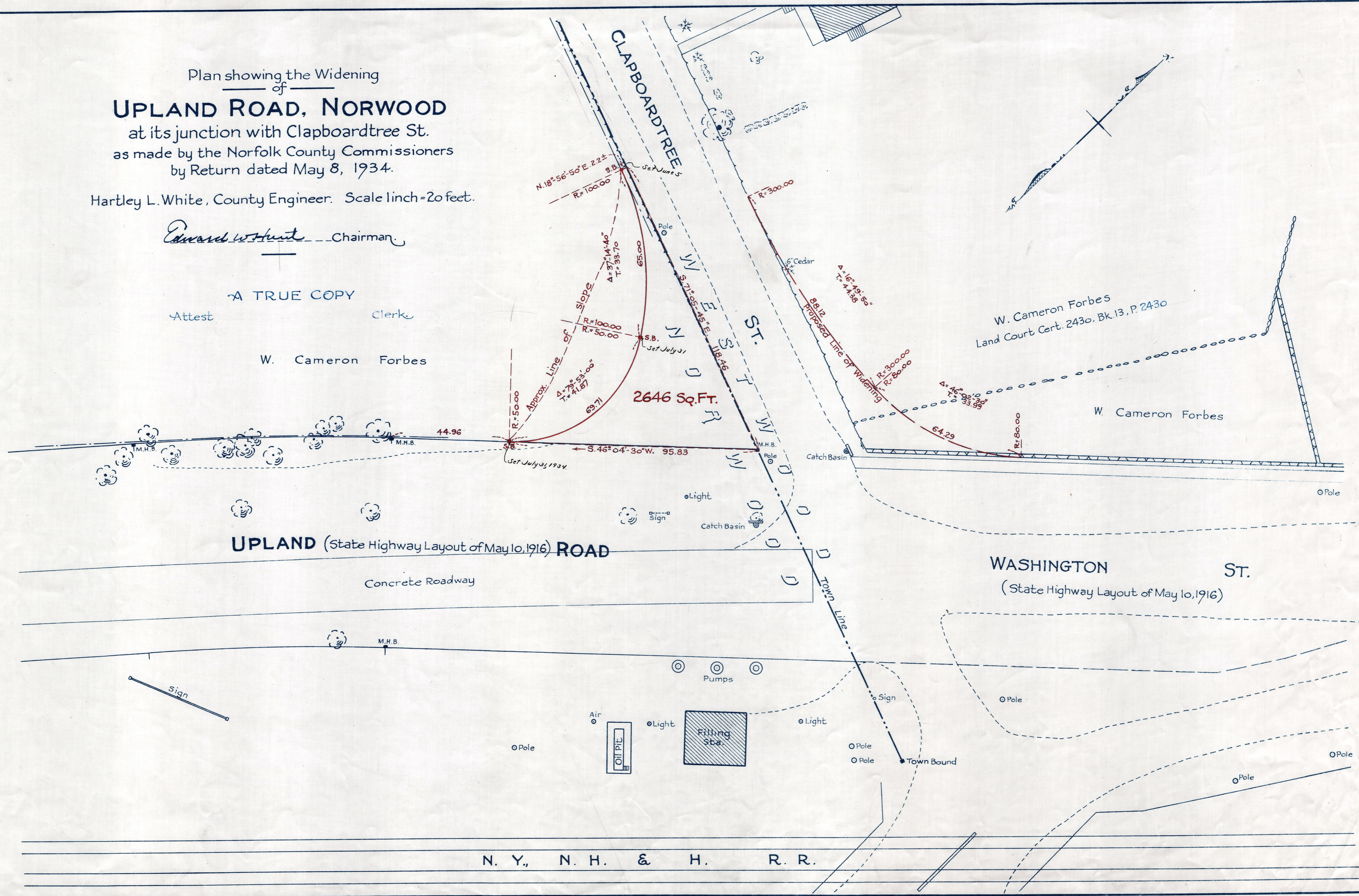
*Edward W. Hunt* Chairman

A TRUE COPY

Attest

Clerk

W. Cameron Forbes



Date of Entry June 5, 1934.

P.B. 117-205  
TAKING 2026-472  
Rec. 5-14-34