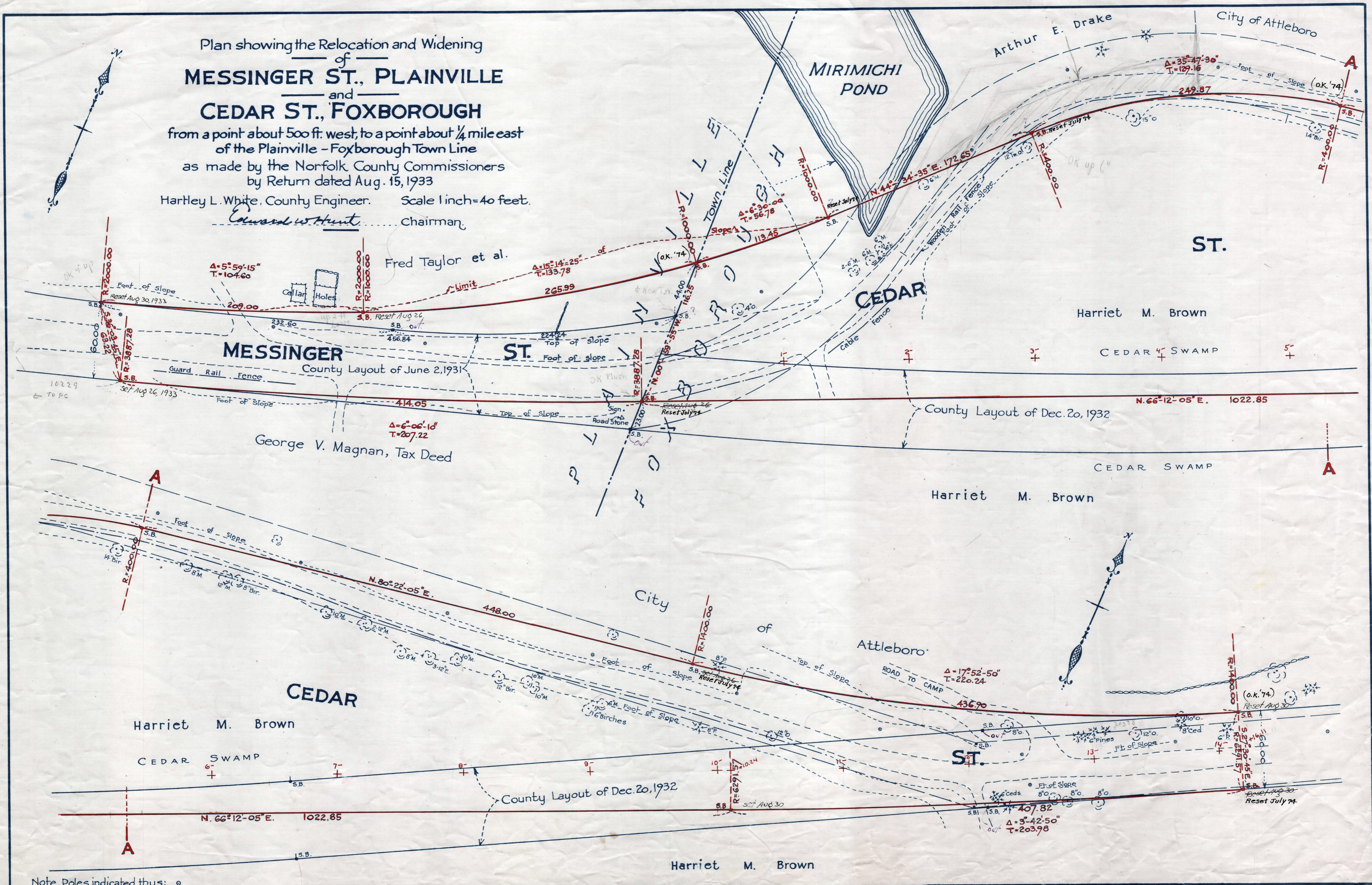


Plan showing the Relocation and Widening  
of  
**MESSINGER ST., PLAINVILLE**  
and  
**CEDAR ST., FOXBOROUGH**

from a point about 500 ft. west, to a point about 1/4 mile east  
of the Plainville - Foxborough Town Line  
as made by the Norfolk County Commissioners  
by Return dated Aug. 15, 1933

Hartley L. White, County Engineer. Scale 1 inch = 40 feet.

*Edward W. Hunt*, Chairman



Note... Poles indicated thus: ○

Date of Entry Aug 22, 1933.

P.B. 117-355  
TAKING - 1998-341  
Rec. 8-17-33