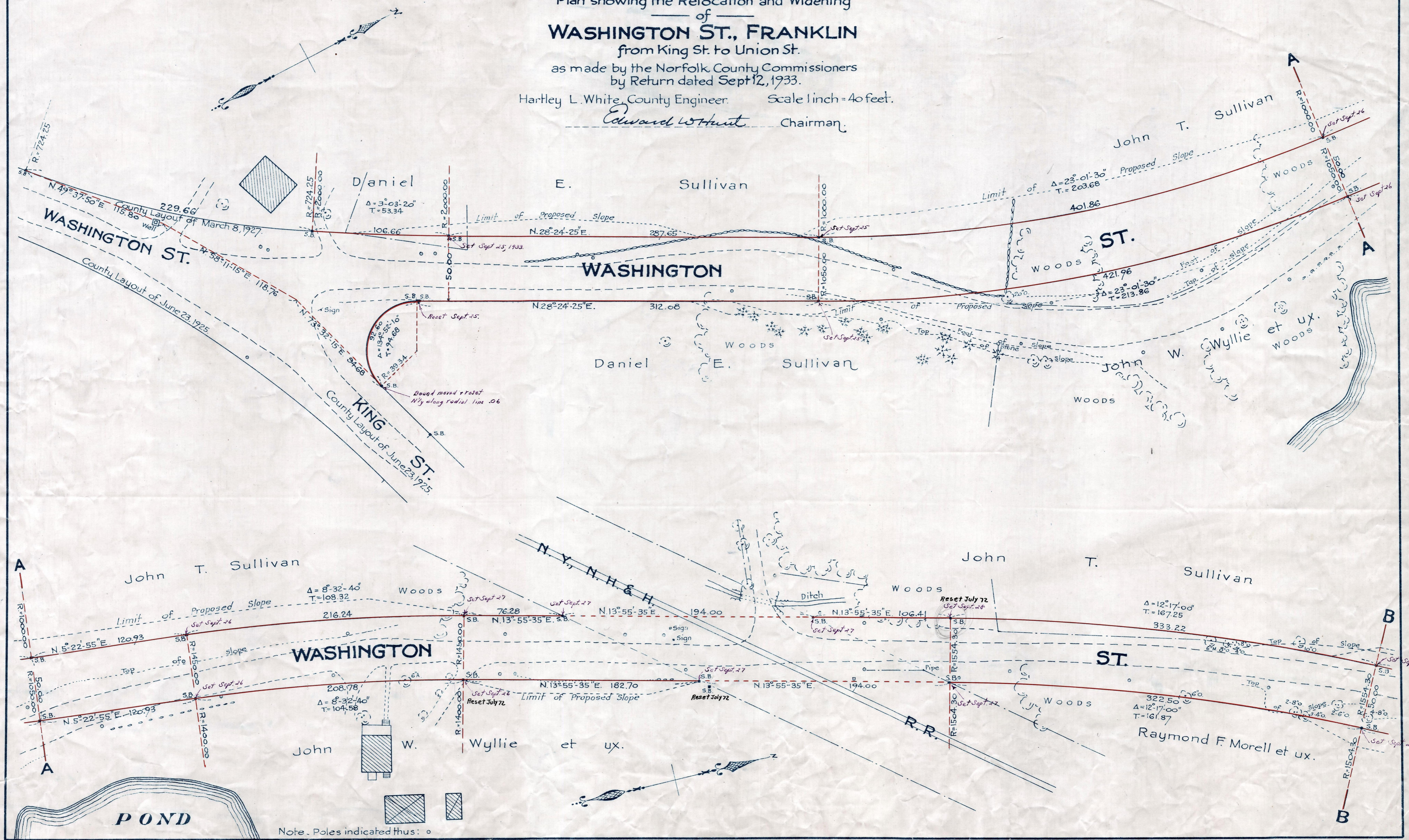


Plan showing the Relocation and Widening of WASHINGTON ST., FRANKLIN from King St. to Union St.

as made by the Norfolk County Commissioners by Return dated Sept 12, 1933.
Hartley L. White, County Engineer. Scale 1 inch = 40 feet.
Edward W. Hunt Chairman.



Date of Entry July 13, 1934. 202
P.B. 117-388-90
TAKING 2002-441
Rec 9-27-33