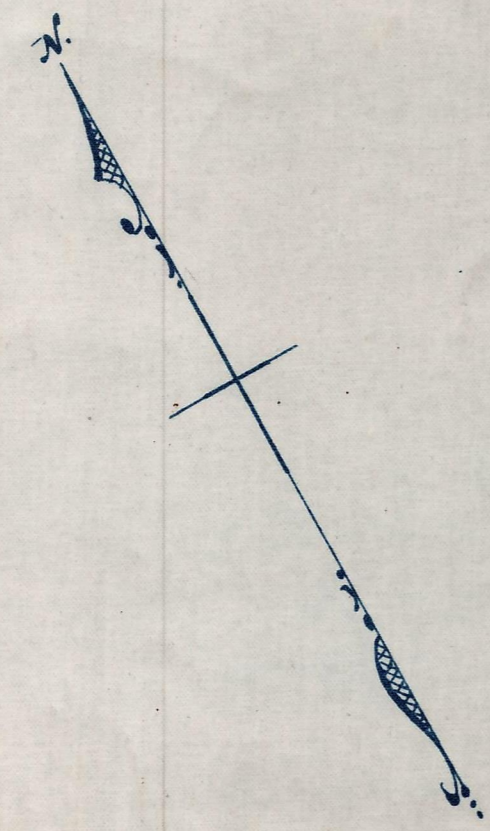
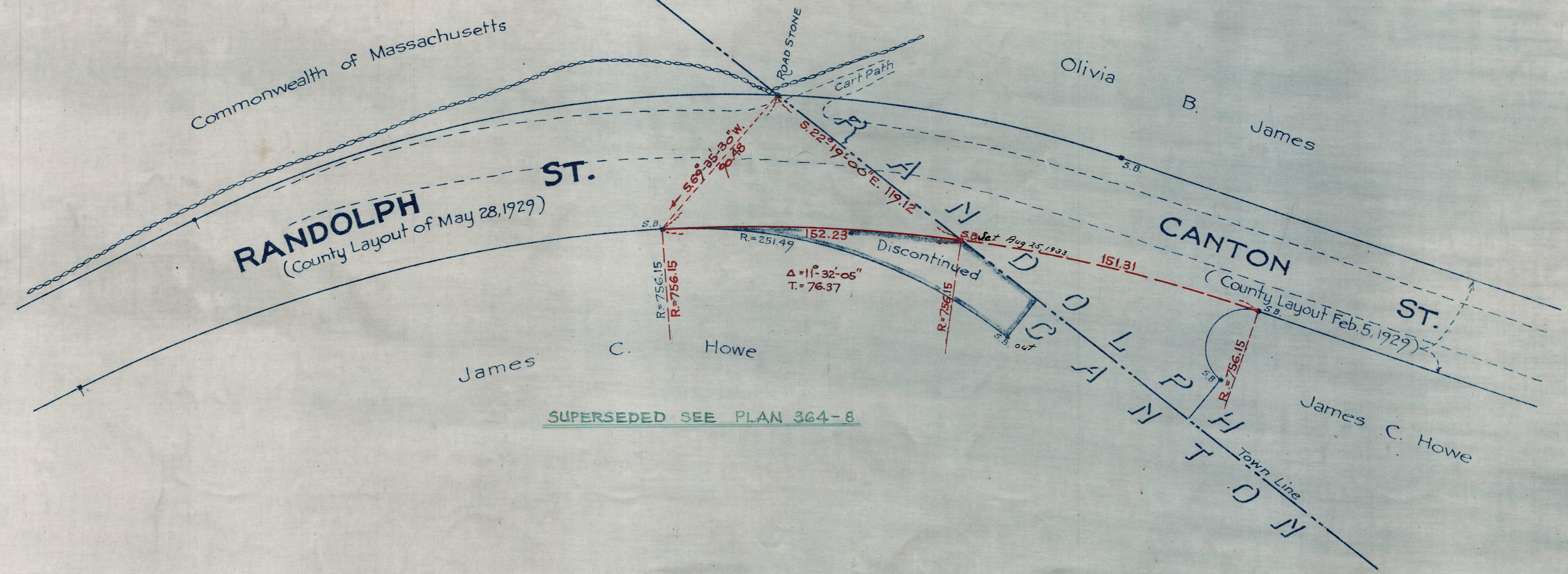


Plan showing the Relocation  
of  
**RANDOLPH ST., CANTON**  
at the Randolph Town Line  
as made by the Norfolk County Commissioners  
by Return dated July 18, 1933.  
Hartley L. White, County Engineer. Scale 1 inch = 40 feet.  
*Edward W. Hunt* Chairman.



FOR 1977 DETERMINATION OF  
TOWN LINE SEE CALC. BOOKS  
ENV. #702.



SUPERSEDED SEE PLAN 364-8

Date of Entry