

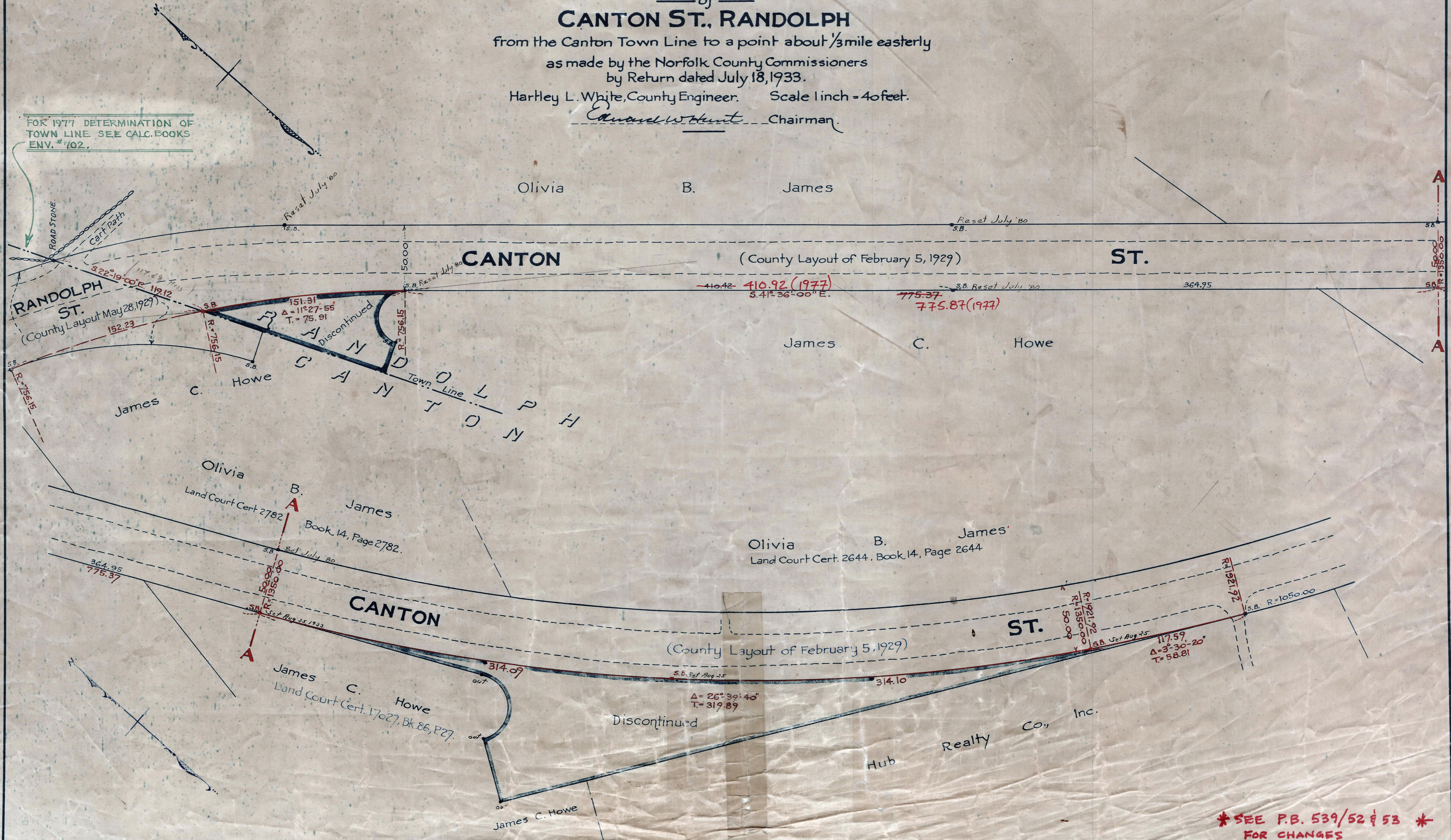
Plan showing the Relocation  
of  
**CANTON ST., RANDOLPH**

from the Canton Town Line to a point about 1/3 mile easterly  
as made by the Norfolk County Commissioners  
by Return dated July 18, 1933.

Hartley L. White, County Engineer. Scale 1 inch = 40 feet.

*Edward W. Hunt* Chairman.

FOR 1977 DETERMINATION OF  
TOWN LINE SEE CALC. BOOKS  
ENV. #702.



**\* SEE P.B. 539/52 & 53 \*  
FOR CHANGES**