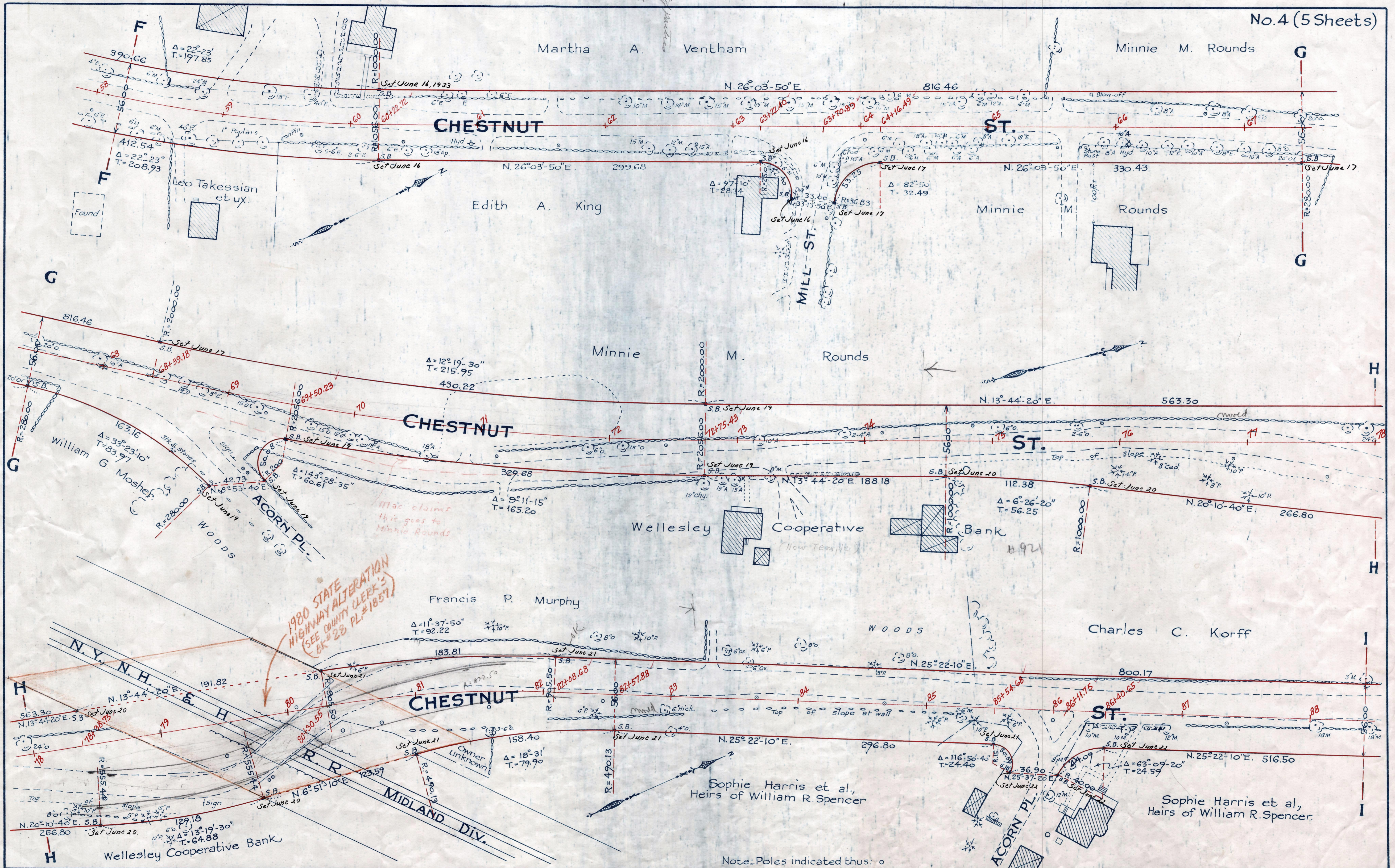


chap 159  
no. 88  
no. 80  
no. 81  
no. 82  
no. 83  
no. 84  
no. 85  
no. 86  
no. 87  
no. 88  
no. 89  
no. 90  
no. 91  
no. 92  
no. 93  
no. 94  
no. 95  
no. 96  
no. 97  
no. 98  
no. 99  
no. 100



1980 STATE HIGHWAY ALTERATION  
(SEE COUNTY CLERK'S BK # 23 PL. # 1857)

Note: Poles indicated thus: ○