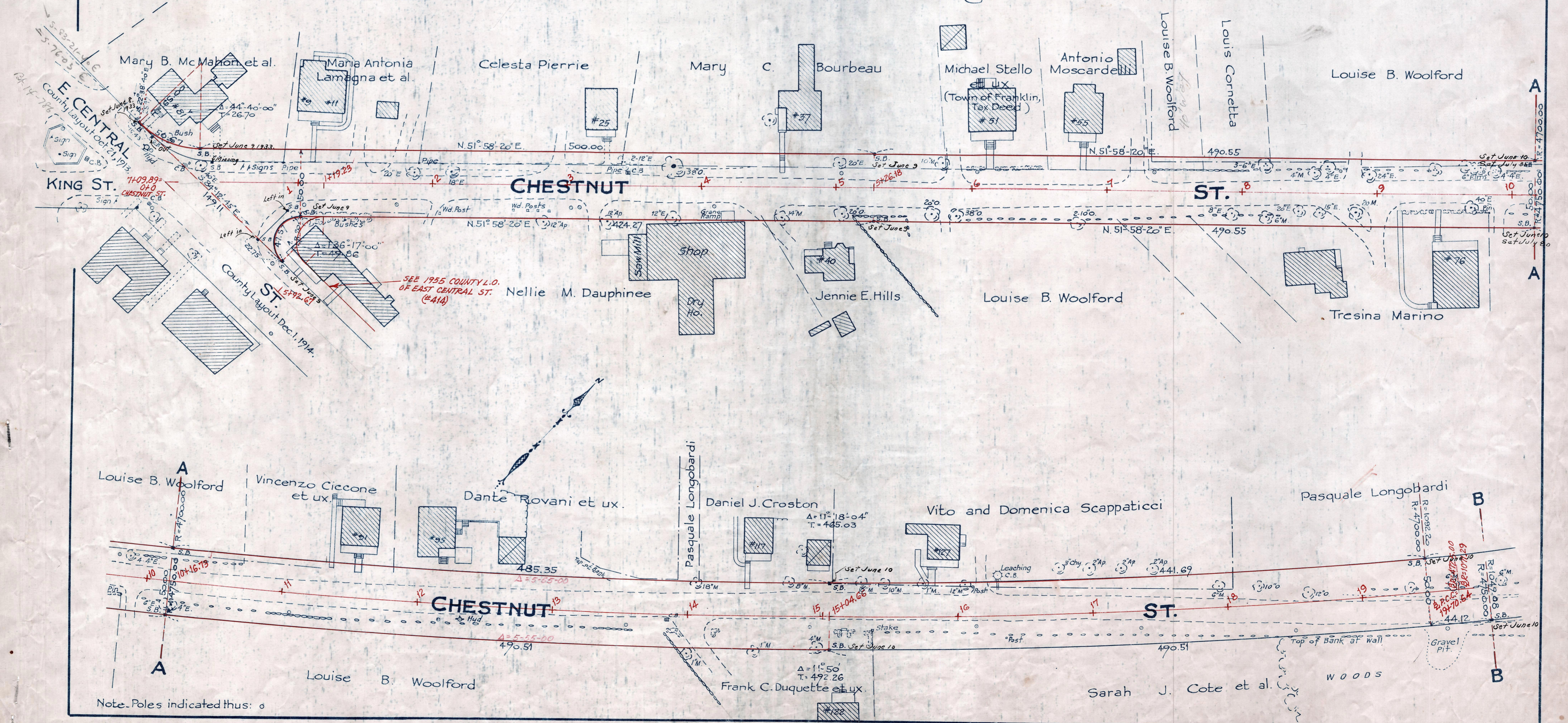


Plan showing the Relocation and Widening of CHESTNUT ST., FRANKLIN

from East Central St. to Pleasant St.
as made by the Norfolk County Commissioners
by Return dated May 31, 1933.

Hartley L. White, County Engineer. Scale 1 inch = 40 feet.

Edward L. Hunt Chairman



Note. Poles indicated thus: o

528-7221

Date of Entry Dec. 14, 1933.

198

P.B. 116-231-235
TAKING-1991-569