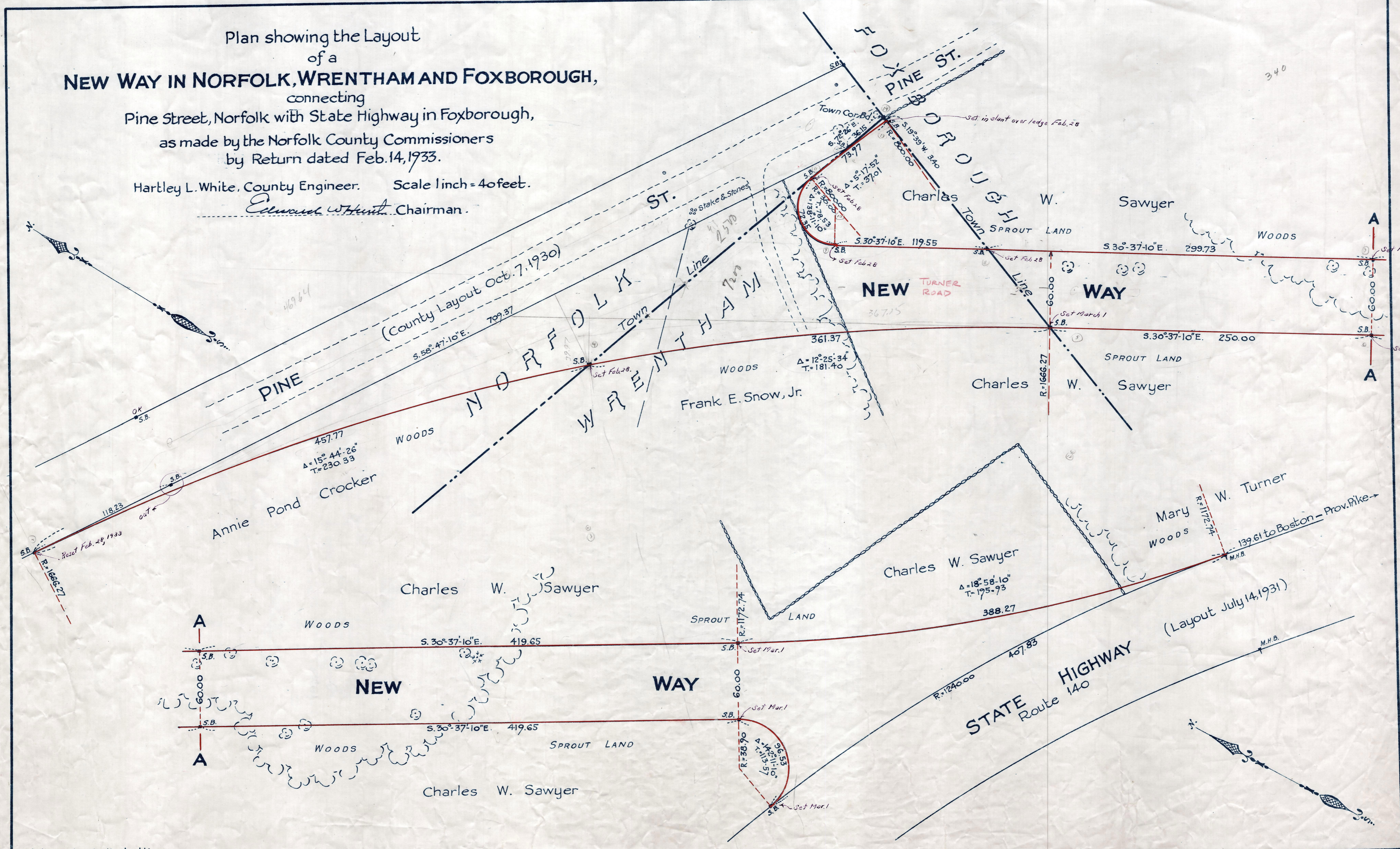


Plan showing the Layout
of a
NEW WAY IN NORFOLK, WRENTHAM AND FOXBOROUGH,
connecting
Pine Street, Norfolk with State Highway in Foxborough,
as made by the Norfolk County Commissioners
by Return dated Feb. 14, 1933.

Hartley L. White, County Engineer. Scale 1 inch = 40 feet.

Edward W. Hunt, Chairman.



Note. Poles indicated thus: •

Date of Entry March 6, 1933
R.B. 116-88
TAKING-1984-531
Rec. 2-23-33